



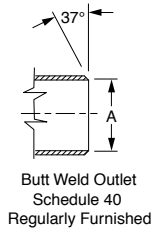
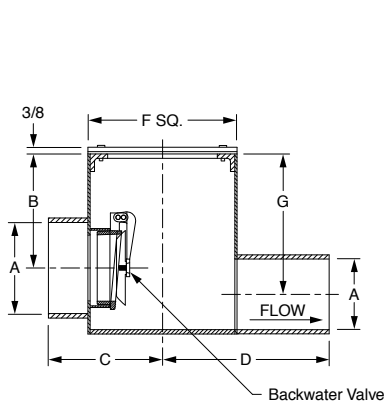
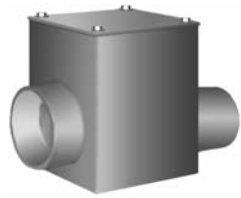
SPECIALTIES, STAINLESS AND CARBON STEEL

FIG. 9795 BACKWATER VALVE



FUNCTION: Used in main or branch sewer lines to protect against backflow. SMITH backwater valves prevent hazardous or damaging backflow unless obstructed by debris or sludge. Valve design permits access to backwater valve assembly servicing or cleaning through a "full opening" cover.

OUTLET VARIATIONS (Specify type of outlet and pipe size in inches.)



Outlet Type	Outlet Designation Outlet Type/Pipe Size	ADD
Butt Weld	BW03, BW04 Specify Schedule 5, 10, †40 or 80	POA
OPTIONS:		ADD
-U	Vandal Proof	POA

A OUTLET SIZE	B	C	D	F SQ.	G	†-CF8 (304) STAINLESS STEEL	-CF8M (316) STAINLESS STEEL	-A27 CARBON STEEL	APPROX. WT. LBS
03"	6 1/4"	5 3/4"	9"	7 1/2"	7 1/2"	POA	POA	POA	47
04"	6 1/2"	6 1/2"	9 1/2"	8 1/2"	8"	POA	POA	POA	76

REGULARLY FURNISHED: Fabricated Type 304 Stainless Steel Body, Bolted Cover and Bronze Backwater Valve.

