

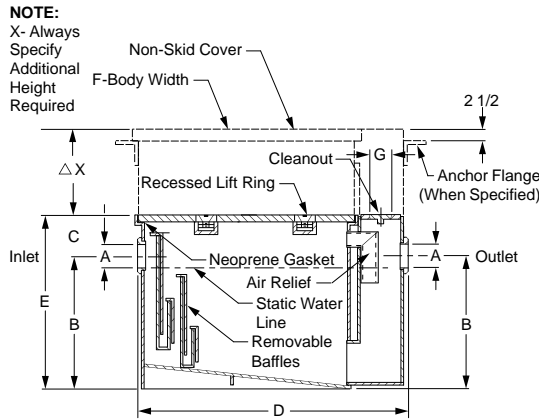


INTERCEPTORS

FIG. 8400E SERIES LARGE CAPACITY STEEL GREASE INTERCEPTORS W/INTEGRAL EXTENSION**



FUNCTION: Used in large kitchens or institutions where there is an anticipated high rate of discharge of grease and oil laden waste from the fixtures. Large fabricated steel units available from 75 to 500 gallons per minute are most adaptable to industrial applications such as food processing and packaging plants. Integral extension permits a greater dimension from center line of inlet and outlet to finished floor level to accommodate deeper roughing conditions. "X" dimension should always be specified when ordering.



Side View
Fig. 8450E Shown

OPTIONS:

- AC Aluminum Cover on Interceptor **ADD POA**
- Y No-Hub Adaptor (2 req'd) **See Fig. 2646Y**
- Inlet & Outlet, One Size Larger..... **438.00**



▲Fig. 8450E carries the Plumbing and Drainage Institute Certification Seal Certifying conformance to Grease Interceptor Standard PDI-G101.

FIGURE NO.	GPM FLOW RATE	GREASE CAP. LBS.	INLET & OUTLET SIZE A	ROUGHING DIM			BODY		C.O. PLUG SIZE G	†Δ DUCO COAT W/ UP TO 10" EXT.	ADD FOR:					APPROX. WT. LBS.
				B	C	D	E HEIGHT	F WIDTH			EACH ADDITIONAL 1" OF EXT.	H2O COVER	ANCHOR FLANGE (-F)	FLASHING FLANGE AND CLAMP (-FC)	SEDIMENT BKT (-B)	
▲8450E	75	150	04"	21 1/2"	15 1/2"	50"	37"	30 1/2"	3"	19,331.00	161.00	5,490.00	1,261.00	2,290.00	2,130.00	500
8460E	100	200	04"	27"	16 1/2"	54"	43 1/2"	33 1/2"	3"	21,750.00	172.00	7,555.00	1,410.00	2,562.00	2,325.00	720
8465E	150	300	05"	33"	17 1/2"	60 3/4"	50 1/2"	38 1/2"	4"	24,163.00	197.00	9,700.00	1,970.00	3,173.00	2,439.00	885
8470E	200	400	05"	37"	17 1/2"	67 3/4"	54 1/2"	43 1/2"	4"	35,938.00	207.00	11,064.00	2,112.00	3,706.00	2,563.00	1,355
8475E	250	500	05"	40"	18"	73 3/4"	58"	47 1/2"	4"	42,205.00	227.00	15,273.00	2,814.00	5,000.00	2,705.00	1,670
8480E	350	700	05"	43 1/2"	18"	85 3/4"	61 1/2"	54 1/2"	4"	55,704.00	286.00	23,119.00	3,560.00	5,978.00	3,414.00	2,105
8490E	500	1000	06"	48"	18"	103 1/4"	66"	64 1/2"	5"	74,225.00	342.00	32,533.00	4,226.00	7,109.00	4,050.00	2,635

Δ Specify Extension Height when ordering, measuring from top of interceptor to top of extension.

REGULARLY FURNISHED: Steel Interceptor with Gray Duco Coating Inside and Outside and Flow Control Fitting. Extension Height as Specified.

