

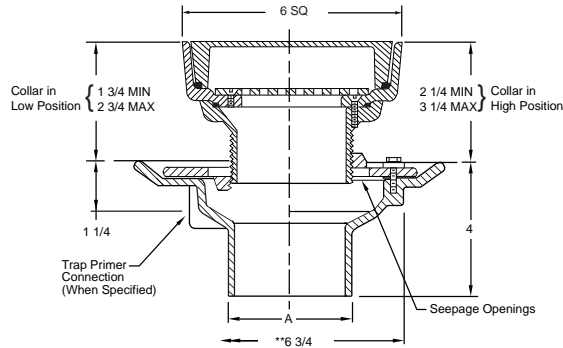


# FLOOR DRAINS

**FIG. 2005 (-BS) FLOOR DRAIN AND ADJ. STRAINER WITH SQUARE SOLID HINGED COVER**  
**FIG. 2010 (-BS) FLOOR DRAIN AND ADJ. STRAINER WITH SQUARE SOLID HINGED COVER**



**FUNCTION:** General service floor drain for use in showers, toilets, kitchens and other finished areas where foot traffic is expected. Reversible flashing collar permits adjustment of the strainer to meet finished floor level.



**OUTLET VARIATIONS** (Specify type of outlet and pipe size in inches.)

Outlet Type	Outlet Designation	Outlet Type/Pipe Size	"C" Body HT. DIM.	ADD
Inside Caulk (2010)	C02, C03, C04		4"	N/C
Speedi-Set SW (2005)	L02, L03, L04		4"	N/C
Speedi-Set XH (2005)	LXH02, LXH03, LXH04		4"	N/C
Threaded (2010)	T02, T03, T04		3"	47.00
No-Hub (2005)	Y02, Y03, Y04		4"	N/C

**OPTIONS:**

Option	Description	ADD
-ARI	Acid Resistant Inside	102.00
-BB	Bronze Body, 02-04"	734.00
	05-06"	2,255.00
-DID*	Drain Installation Device	83.00
-G	Galvanized Body	119.00
-GC	Gasketed/Water Tight	50.00
-P	Trap Primer Conn	N/C
-SEC	Secured Cover	33.00
-SS	Secondary Strainer	38.00
-U	Vandal Proof Screws	33.00

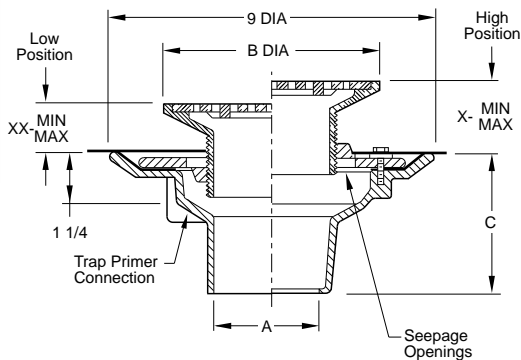
A OUTLET SIZE	B TOP SIZE	X MIN	X MAX	XX MIN	XX MAX	PB TOP	†NB TOP	CP TOP	APPROX. WEIGHT LBS.
02, 03, 04"	06 x 06"	1 1/4	2 1/4	3/4	1 5/8	662.00	754.00	819.00	11

\*Applies to 2005 only.

**REGULARLY FURNISHED:** Duco Cast Iron Body with Flashing Collar and Adjustable Strainer with Hinged Solid Cover.

**FIG. 2005 (-C) FLOOR DRAIN AND ADJ. STRAINER WITH ROUND REINFORCED GRATE**  
**FIG. 2010 (-C) FLOOR DRAIN AND ADJ. STRAINER WITH ROUND REINFORCED GRATE**

**FUNCTION:** General service floor drain for use in showers, toilets, kitchens and other finished areas where foot traffic is expected. Reversible flashing collar permits adjustment of the strainer to meet finished floor level. Used in finished floors where light wheeled loads are anticipated.



**OUTLET VARIATIONS** (Specify type of outlet and pipe size in inches.)

Outlet Type	Outlet Designation	Outlet Type/Pipe Size	"C" Body HT. DIM.	ADD
Inside Caulk (2010)	C02, C03, C04		4"	N/C
Speedi-Set SW (2005)	L02, L03, L04		4"	N/C
Speedi-Set XH (2005)	LXH02, LXH03, LXH04		4"	N/C
Threaded (2010)	T02, T03, T04		3"	47.00
No-Hub (2005)	Y02, Y03, Y04		4"	N/C

**OPTIONS:**

Option	Description	ADD
-ARI	Acid Resistant Inside	102.00
-B	Sediment Bucket	65.00
-BB	Bronze Body, 02-04"	734.00
	05-06"	2,255.00
-BFV	Ball Float Bkwtr Valve	230.00
-DID*	Drain Installation Device	83.00
-G	Galvanized Body	119.00
-P	Trap Primer Conn	N/C
-U	Vandal Proof Screws	33.00
-V	Flapper Backwater Valve	230.00

A OUTLET SIZE	B TOP SIZE	X MIN	X MAX	XX MIN	XX MAX	PB TOP	†NB TOP	CP TOP	APPROX. WEIGHT LBS.
02, 03, 04"	05"	1 1/4	2 1/4	3/4	1 5/8	407.00	421.00	436.00	13
02, 03, 04"	06"	1 1/4	2 1/4	3/4	1 5/8	447.00	484.00	508.00	15
02, 03, 04"	08"	1 1/2	2 1/2	1	1 7/8	618.00	643.00	681.00	17
02, 03, 04"	10"	1 1/2	2 3/8	1	1 7/8	796.00	833.00	893.00	19

\*Applies to 2005 only.

**REGULARLY FURNISHED:** Duco Cast Iron Body with Flashing Collar and Adjustable Strainer with Round Reinforced Grate.

When ordering, specify drain body and strainer type, size and finish. Ex. 2005Y04 w/A05NB.

†REGULARLY FURNISHED

