

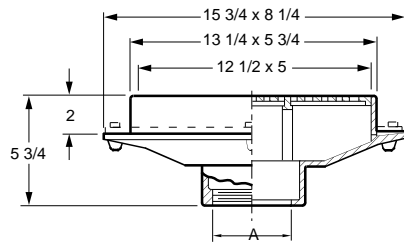


# FLOOR DRAINS

## FIG. 2585 GUTTER DRAIN WITH SECURED GRATE



**FUNCTION:** Used in gutters and trenches where only a limited width is available for drainage. Long rectangular grate with large free area is capable of handling large amounts of water.



**OUTLET VARIATIONS** (Specify type of outlet and pipe size in inches.)

Outlet Type	Outlet Designation	Outlet Type/Pipe Size	ADD
Inside Caulk	C02, C03, C04		N/C
Threaded	T02, T03, T04		47.00
No-Hub	Y02, Y03, Y04		N/C

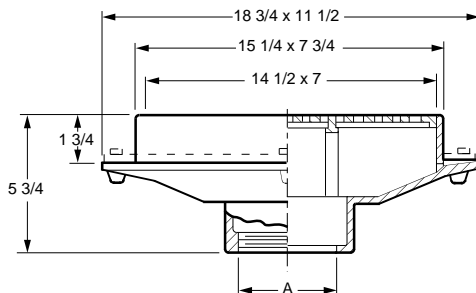
OPTIONS:	ADD
-C Flashing Clamp	102.00
-DBS Alum Dome Bottom Str	71.00
-G Galvanized CI	300.00
-M Ductile Iron Grate	207.00
-U Vandal Proof Screws	89.00

A OUTLET SIZE	TOP SIZE	FREE AREA SQ IN	†DUCO CI	DUCO CI PB TOP	DUCO CI NB TOP	APPROX. WEIGHT LBS
02, 03, 04"	13 x 6"	21.5	421.00	748.00	788.00	24

**REGULARLY FURNISHED:** Duco Cast Iron Body with Secured Grate.

## FIG. 2586 GUTTER DRAIN WITH SECURED GRATE

**FUNCTION:** Used in gutters and trenches where only a limited width is available for drainage. Long rectangular grate with large free area is capable of handling large amounts of water.



**OUTLET VARIATIONS** (Specify type of outlet and pipe size in inches.)

Outlet Type	Outlet Designation	Outlet Type/Pipe Size	ADD
Inside Caulk	C03, C04, C05, C06		N/C
Threaded	T03, T04, T05, T06		47.00
No-Hub	Y03, Y04, Y05, Y06		See Fig 2646Y

OPTIONS:	ADD
-C Flashing Clamp	134.00
-G Galvanized CI	359.00
-M Ductile Iron Grate	213.00
-U Vandal Proof Screws	89.00

A OUTLET SIZE	TOP SIZE	FREE AREA SQ IN	†DUCO CI	DUCO CI PB TOP	DUCO CI NB TOP	APPROX. WEIGHT LBS
03, 04"	15 x 8"	31	762.00	1,296.00	1,357.00	43
05, 06"	15 x 8"	31	762.00	1,296.00	1,357.00	43

**REGULARLY FURNISHED:** Duco Cast Iron Body with Secured Grate.

