

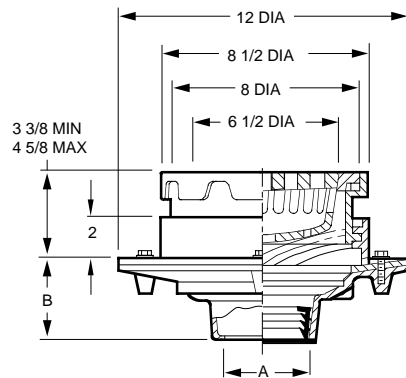


# FLOOR DRAINS

## FIG. 2350 FLOOR DRAIN WITH 8 1/2" ROUND ADJUSTABLE TOP AND "SAFE-SET" SEDIMENT BUCKET



**FUNCTION:** Used in any type of floor construction where accurate positioning of grate is necessary to meet finished floor level and where waste water contains solids or debris that must be intercepted. "Safe-Set" design insures bucket replacement after cleaning, since top grate cannot be inserted unless bucket is in place.



A OUTLET SIZE	TOP SIZE	FREE AREA SQ IN	†DUCO CI	DUCO CI PB TOP	DUCO CI NB TOP	APPROX. WEIGHT LBS
02, 03, 04"	8 1/2"	10.5	504.00	770.00	833.00	50

**REGULARLY FURNISHED:** Duco Cast Iron Body and Flashing Collar with Adjustable Top and Bar Grate with Sediment Bucket.

### OUTLET VARIATIONS (Specify type of outlet and pipe size in inches.)

Outlet Type	Outlet Designation	Outlet Type/Pipe Size	"B" Body HT. DIM.	ADD
Inside Caulk	C02, C03, C04		3 3/4"	N/C
Speedi-Set SW	L02, L03, L04		3 3/4"	N/C
Speedi-Set XH	LXH02, LXH03, LXH04		3 3/4"	N/C
Threaded	T02, T03, T04		2"	47.00
No-Hub	Y02, Y03, Y04		3 3/4"	N/C

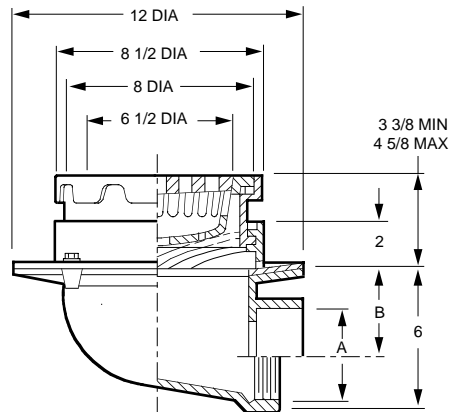
### OPTIONS:

	ADD
-D Dome Grate, CI	50.00
-DID* Drain Installation Device	125.00
-DNB Dome Grate, add to CI	554.00
-DPB Dome Grate, add to CI	441.00
-E Ext, ea 2" or fract	117.00
-FBSCI Flat Bottom Strainer, CI	36.00
-G Galvanized CI	355.00
-MBG Ductile Iron Bucket & Grate	304.00
-P Trap Primer Conn	99.00
-S Square Top, CI	196.00
-SNB Square Top, add to CI	571.00
-SPB Square Top, add to CI	472.00
-U Vandal Proof Grate	89.00

\*Requires body modifications. Must be shipped complete from the factory.

## FIG. 2355 FLOOR DRAIN WITH 8 1/2" ROUND ADJUSTABLE TOP AND "SAFE-SET" SEDIMENT BUCKET

**FUNCTION:** Used in any type of floor construction where accurate positioning of grate is necessary to meet finished floor level and where waste water contains solids or debris that must be intercepted. "Safe-Set" design insures bucket replacement after cleaning, since top grate cannot be inserted unless bucket is in place.



A OUTLET SIZE	TOP SIZE	FREE AREA SQ IN	B	†DUCO CI	DUCO CI PB TOP	DUCO CI NB TOP	APPROX. WEIGHT LBS
02"	8 1/2"	10.5	4 1/4"	637.00	903.00	966.00	62
03"	8 1/2"	10.5	3 3/4"	637.00	903.00	966.00	62
04"	8 1/2"	10.5	3 1/4"	637.00	903.00	966.00	62

**REGULARLY FURNISHED:** Duco Cast Iron Body and Flashing Collar with Adjustable Top and Bar Grate with Sediment Bucket.

### OUTLET VARIATIONS (Specify type of outlet and pipe size in inches.)

Outlet Type	Outlet Designation	Outlet Type/Pipe Size	ADD
Inside Caulk	C02, C03, C04		N/C
Threaded	T02, T03, T04		N/C
No-Hub	Y02, Y03, Y04		See Fig. 2646Y

### OPTIONS:

	ADD
-D Dome Grate, CI	50.00
-DNB Dome Grate, add to CI	554.00
-DPB Dome Grate, add to CI	441.00
-E Extension, ea 2" or fract	117.00
-G Galvanized CI	355.00
-MBG Ductile Iron Bucket & Grate	304.00
-P Trap Primer Conn	99.00
-S Square Top, CI	196.00
-SNB Square Top, add to CI	571.00
-SPB Square Top, add to CI	472.00
-U Vandal Proof Grate	89.00

