



Commercial Post/Yard Hydrants

COMPRESSION-TYPE POST HYDRANTS WITH 3/4" (19) OR 1" (25) CONNECTIONS



FIG. # 5960, 5961

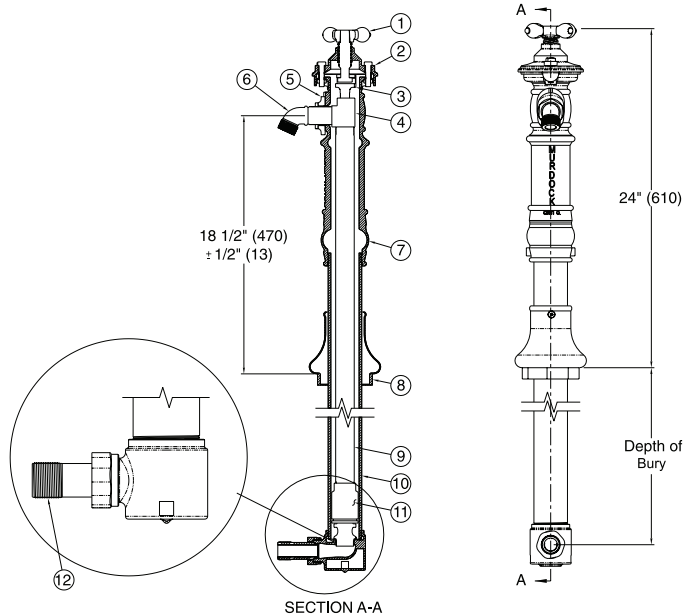
Compression-Type Non-Freeze Post Hydrant with Wheel Handle

FUNCTION:

Fig. 5960 or 5961 delivers year-round service outside or in unheated buildings. To provide freeze resistant functionality, the control valve is located below the frost line. Turning the handle raises or lowers the internal supply-line assembly, controlling the valve. Hydrant must be operated fully "on." Constructed of heavy red brass, premium-quality gray iron and steel, Fig. 5960 or 5961 is designed for trouble-free reliability and easy maintenance.

PRODUCT FEATURES:

- 3/4" (19) or 1" (25) bottom connection (available with N.P.T. tapping to connect to draw line).
- Constructed of heavy-duty red brass, quality gray iron and steel
- Freeze resistant
- Specify -BFH for Ball Check Valve and Vacuum Breaker
- Ideal for year-round service such as in parks, picnic areas, farms, or unheated buildings



- ① Handle & screw
- ② Top
- ③ Stirrup
- ④ Tee
- ⑤ Slide
- ⑥ 3/4" (19) or 1" (25) Hose Thread Brass Nozzle
- ⑦ Stock
- ⑧ Base
- ⑨ Inner Supply Pipe
- ⑩ Outer Casing
- ⑪ Valve
- ⑫ 3/4" (19) or 1" (25) Male NPT Brass Connection

NOTE: Dimensions shown in parentheses are in millimeters.