



Contamination Control Dryers

## HEPA/ULPA<sup>\*</sup> Filter Application

- Steam-Operated (Steel Coil)
- Electric-Operated Units Available
- Electropolished Stainless Steel Basket
- Stainless Steel Basket Support Assembly
- Stainless Steel Front
- Stainless Steel Base
- Stainless Steel Outer Drum
- Stainless Steel Filter Housing
- Emergency Stop
- Microprocessor Controls
- 3-Phase Motor with Reversing Basket
- Static Prevention System
- Nylon Bar Spacers
- Special Seals
- Automatic Door Interlock
- Side Access Cleaning Panel
- Hi-Temp/Hi-Pressure Monitors



<sup>\*</sup> High Efficiency Particle Accumulator  
Ultra High Efficiency Particle Accumulator

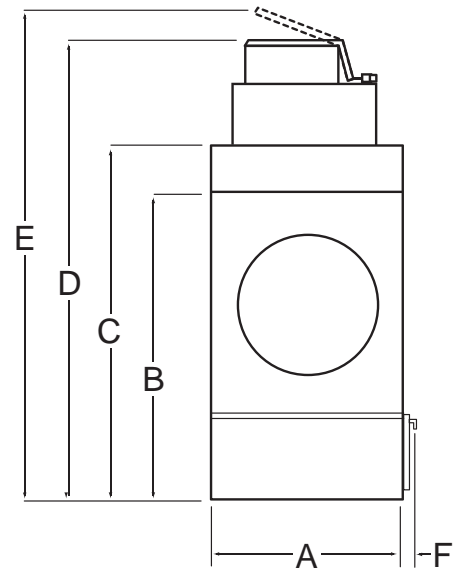
# ADH-120/ADH-170

SPECIFICATIONS		ADH-120		ADH-170		
MAXIMUM CAPACITY (Dry Weight)		120 lb	54.43 kg	170 lb	77.11 kg	
TUMBLER DIAMETER		44-1/2"	113.03 cm	51-1/2"	130.81 cm	
TUMBLER DEPTH		42-1/2"	107.95 cm	42-1/2"	107.95 cm	
TUMBLER VOLUME		38.20 cu ft	1,081.70 L	51.20 cu ft	1,449.82 L	
TUMBLER/DRIVE MOTOR		3/4 hp	0.56 kW	1 hp	0.75 kW	
BLOWER/FAN MOTOR		3 hp	2.24 kW	7-1/2 hp	5.59 kW	
AIRFLOW	Electric	2,150 cfm	60.88 cmm	—	—	
	Steam	1,950 cfm	55.22 cmm	4,400 cfm	12.59 cmm	
APPROXIMATE SHIPPING WEIGHT		1,915 lb	868.63 kg	2,220 lb	1,006.98 kg	
STEAM CONSUMPTION		450 lb/hr	204.12 kg/hr	725 lb/hr	328.85 kg/hr	
STEAM BOILER HP (Normal Load)		13 Bhp		19 Bhp		
A		48-5/8"	123.5 cm	55-1/4"	140.34 cm	
	B	Electric	69-1/2"	176.5 cm	—	—
		Steam	68-1/2"	174 cm	80-7/8"	205.42 cm
	C	Electric	87"	221 cm	N / A	
		Steam	86-5/8"	220 cm	N / A	
	D	Electric	N / A		—	—
		Steam	N / A		122.5"	311.15 cm
	E	Electric	129-3/4"	329.6 cm	—	—
		Steam	118"	299.7 cm	131-3/8"	333.7 cm
	F		3"	7.6 cm	2-7/8"	7.3 cm
	G*	Electric	16"	40.6 cm	—	—
		Steam	16"	40.6 cm	18"	45.72 cm
	H		8-3/4"	22.2 cm	19-1/2"	49.53 cm
	I		8-3/4"	22.2 cm	14"	35.56 cm
	J		22-1/4"	56.52 cm	22-1/4"	56.52 cm
	K		62-1/2"	158.8 cm	62-1/4"	158.12 cm
L		100-3/4"	255.90 cm	100-7/8"	256.22 cm	
Steam Supply Connection**		(2) 1" F.N.P.T.		1-1/2" F.N.P.T.		
Steam Return Connection**		(2) 1/2" F.N.P.T.		1-1/2" F.N.P.T.		

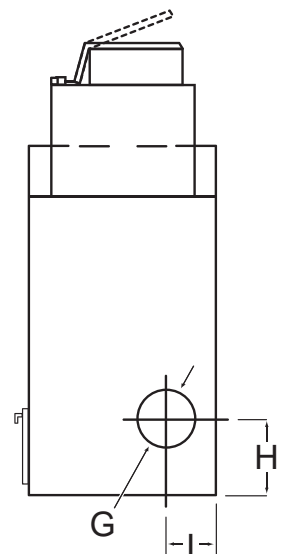
Shaded areas are stated in metric equivalents. Specifications subject to change without notice.

\* Ductwork size varies with installation conditions.

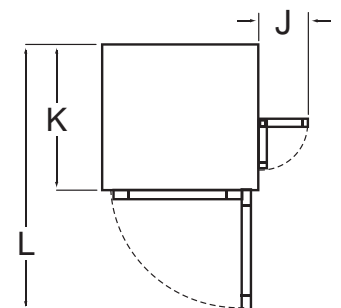
\*\* Size of piping to dryer varies with installation conditions. Contact factory for assistance.



Front View



Rear View



Top View



American Dryer Corporation  
 88 Carrant Road, Fall River, MA 02720-4781  
 (508) 678-9000 FAX (508) 678-9447  
 sales@amdry.com www.amdry.com

Finance with American Credit Corp., ext. 119  
 amcr@amdry.com www.amdry.com/financing