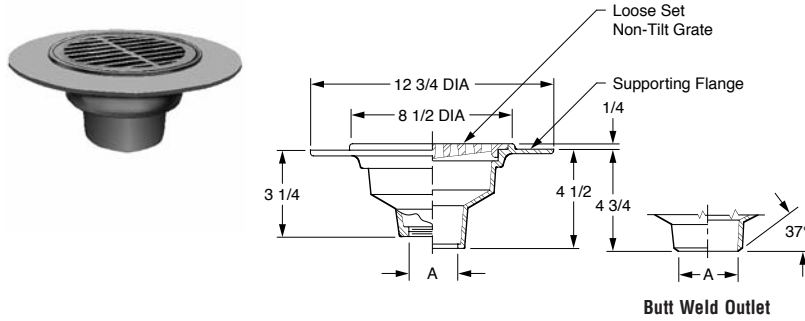




SPECIALTIES, STAINLESS AND CARBON STEEL

FIG. 9705 FLOOR DRAIN W/8 1/2" ROUND MEDIUM DUTY TOP W/EXTENDED INTEGRAL FLANGE FOR WELDING TO STEEL DECKS

FUNCTION: Used in areas where drain body is welded to deck or where waterproof traffic floor coverings are applied and where a corrosion resistant drain is required.



OUTLET VARIATIONS (Specify type of outlet and pipe size in inches.)

Outlet Type	Outlet Designation Outlet Type/Pipe Size	ADD
Butt Weld	BW02, BW03, BW04 Specify Schedule 5, 10, †40, or 80	POA
Inside Caulk	C02, C03, C04	POA
Threaded	T02, T03, T04	POA

OPTIONS:	ADD
-B Stainless Steel Sediment Bucket (Type 304)	POA
-SC Solid Scoriated Cover	POA
-SF Satin Finish	POA
-U Vandal Proof Screws	POA

	DEDUCT
-CIG Cast Iron Grate	POA
-RB Rough Bronze Grate	POA
-RNB Rough NB Grate	POA

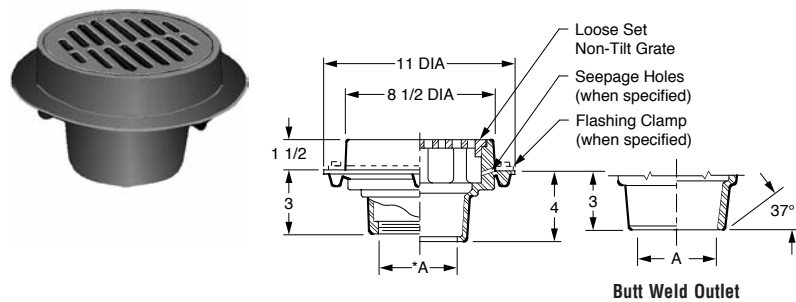
A OUTLET SIZE	FREE AREA SQ IN	†-CF8 (304) STAINLESS STEEL	-CF8M (316) STAINLESS STEEL	-A27 CARBON STEEL	APPROX. WT. LBS
02, 03, 04"	20.50	POA	POA	POA	21

REGULARLY FURNISHED: CF8 (Equivalent to Type 304) Rough Finish Stainless Steel Body and Loose Set Non-Tilt Grate.

SPECIALTIES

FIG. 9710 FLOOR DRAIN WITH 8 1/2" ROUND MEDIUM DUTY TOP

FUNCTION: Used in floors where corrosive liquids must drain or be discharged. Solid top variation with closure plug allows placement of drains for future use. The advantage of stainless steel over high silicon iron is that it resists corrosive liquids, and accommodates machining for threaded outlets, secured top and/or flashing clamps. These drains are readily adaptable to most types of drain line piping materials. Type 304 stainless steel will handle a variety of corrosive wastes which are found in laboratories, chemical, atomic energy, photographic processing, dairy, breweries and bottling plants.



OUTLET VARIATIONS (Specify type of outlet and pipe size in inches.)

Outlet Type	Outlet Designation Outlet Type/Pipe Size	ADD
Butt Weld	BW02, BW03, BW04 Specify Schedule 5, 10, †40, or 80	POA
Inside Caulk	C02, C03, C04	POA
Threaded	T02, T03, T04	POA

OPTIONS:	ADD
ALL IN TYPE 304	
-B Sediment Bucket	POA
-C Flashing Clamp	POA
-E04 4" Extension	POA
-FBS Flat Bottom Strainer	POA
-SC Solid Scoriated Cover	POA
-SF Satin Finish Top	POA
-TP 3/4" Test Plug (for Closure Plug)	POA
-U Vandal Proof Screws	POA
-W Seepage Holes	POA
-XP Closure Plug & Gasket	
Plastic (XPP)	POA
Type 304SS (XPSS)	POA

	DEDUCT
-CIG Cast Iron Grate	POA
-RB Rough Bronze Grate	POA
-RNB Rough NB Grate	POA

A OUTLET SIZE	FREE AREA SQ IN	†-CF8 (304) STAINLESS STEEL	-CF8M (316) STAINLESS STEEL	-A27 CARBON STEEL	APPROX. WT. LBS
02, 03, 04"	20.50	POA	POA	POA	21

REGULARLY FURNISHED: CF8 (Equivalent to Type 304) Rough Finish Stainless Steel Body, and Loose Set Non-Tilt Grate.

FOR INFORMATION ON POA ITEMS, PLEASE CONTACT YOUR LOCAL JAY R. SMITH REPRESENTATIVE

