

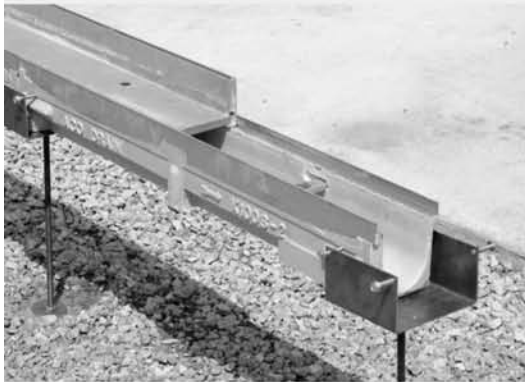
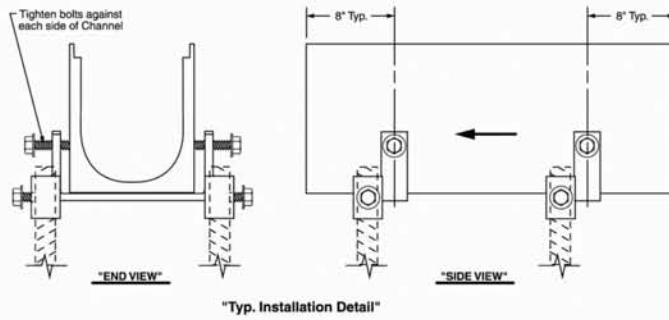
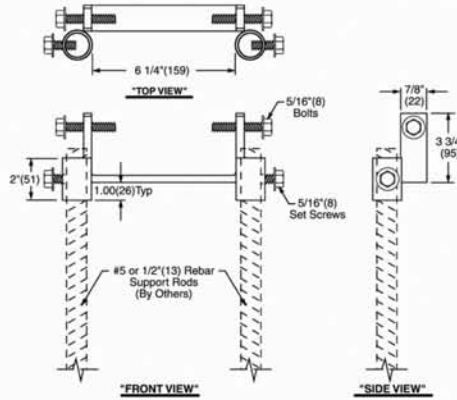
**Figure # 9869-R**  
Rebar Channel Support Chair

**Product Features:**

- Uses rebar or other job site materials to support and hold channel ends together.
- Allows for vertical and horizontal adjustment to Smith/ACO and Enviro-Flo® Trench Drain Series channels.

## REBAR CHANNEL SUPPORT CHAIR

**FUNCTION:** This installation tool uses rebar or other job site materials to support and hold channel ends together, allowing vertical and horizontal adjustment to Smith/ACO and Enviro-Flo® Trench Drain Series channels. Supports channels and keeps them from floating, allows vertical and horizontal adjustment as well as allowing for a monolithic cement pour. Suitable for 9814, 9816, 9818, 9820 and 9930/9931 Drainage Systems.



**Figure # 9869-D**  
Rante Double Arrow Channel Support  
Patent #5372457

**Product Features:**

- Supports and holds two (2) channel ends together.
- Allows for vertical and horizontal adjustment to Smith/ACO Trench Drain Series.

## RANTE DOUBLE ARROW CHANNEL SUPPORT CHAIR

**Function:** This installation device supports and holds channel ends together, allowing vertical and horizontal adjustment to Smith/ACO Trench Drain Series channels.

