

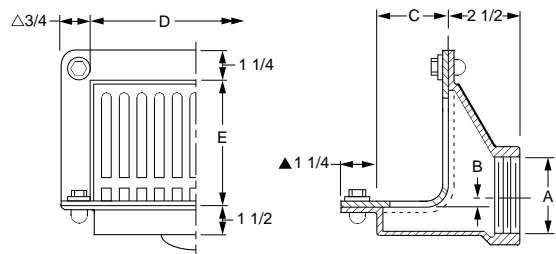


ROOF DRAINS

FIG. 1520 SCUPPER DRAIN - FLUSH GRATE



FUNCTION: Used at junction of roof and parapet. Side outlet 90° drains may be connected to outside downspout by using drain in conjunction with Fig. 1550 downspout adaptor. The flush grate prevents obstruction to traffic.



OUTLET VARIATIONS (Specify type of outlet and pipe size in inches.)

Outlet Type	Outlet Designation Outlet Type/Pipe Size	ADD
Threaded.....	T02, T03, T04.....	N/C
	T05, T06.....	N/C

OPTIONS:		ADD
-G	Galvanized Cast Iron	
	02, 03, 04".....	145.00
	05, 06".....	293.00
-SEC	Secured Grate.....	33.00
-U	Vandal Proof Grate.....	33.00

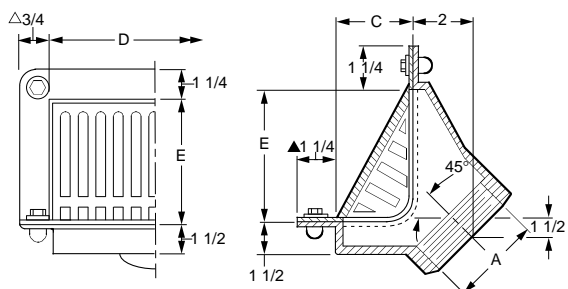
* 02" Size "B" Dimension is 1/4" below flange, not above as shown.
 △For 05 & 06" size, add 1/2".
 ▲For 05 & 06" size, reduce by 3/16".

A OUTLET SIZE	B	C	D	E	FREE AREA SQ IN	†DUCO CI	DUCO CI RB FACE	DUCO CI PB FACE	DUCO CI NB FACE	APPROX. WEIGHT LBS
02"	*	3 1/4"	8 3/4"	5"	20	407.00	668.00	865.00	1,022.00	16
03"	1/4"	3 1/4"	8 3/4"	5"	20	407.00	668.00	865.00	1,022.00	16
04"	1"	3 1/4"	8 3/4"	5"	20	407.00	668.00	865.00	1,022.00	16
05"	1 3/4"	4 1/4"	10 1/2"	6 1/2"	40	766.00	1,192.00	1,389.00	1,772.00	23
06"	1 3/4"	4 1/4"	10 1/2"	6 1/2"	40	766.00	1,192.00	1,389.00	1,772.00	23

REGULARLY FURNISHED: Duco Cast Iron Body, Flashing Clamp and Loose Set Grate.

FIG. 1530 SCUPPER DRAIN - ANGLE GRATE

FUNCTION: Used at junction of roof and parapet. When connecting to an inside leader, the 45° outlet drains may be easily offset into the wall. The angle grate prevents debris from blocking drainage.



OUTLET VARIATIONS (Specify type of outlet and pipe size in inches.)

Outlet Type	Outlet Designation Outlet Type/Pipe Size	ADD
Threaded.....	T02, T03, T04.....	N/C
	T05, T06.....	N/C

OPTIONS:		ADD
-G	Galvanized Cast Iron	
	02, 03, 04".....	145.00
	05, 06".....	293.00
-SEC	Secured Grate.....	33.00
-U	Vandal Proof Grate.....	33.00

△For 05 & 06" size, add 1/2".
 ▲For 05 & 06" size, reduce by 3/16".

A OUTLET SIZE	C	D	E	FREE AREA SQ IN	†DUCO CI	DUCO CI RB FACE	DUCO CI PB FACE	DUCO CI NB FACE	APPROX. WEIGHT LBS
02"	3 1/4"	8 3/4"	5"	17.75	377.00	638.00	835.00	992.00	16
03"	3 1/4"	8 3/4"	5"	17.75	377.00	638.00	835.00	992.00	16
04"	3 1/4"	8 3/4"	5"	17.75	377.00	638.00	835.00	992.00	16
05"	4 1/4"	10 1/2"	6 1/2"	35	730.00	1,156.00	1,353.00	1,510.00	23
06"	4 1/4"	10 1/2"	6 1/2"	35	730.00	1,156.00	1,353.00	1,510.00	23

REGULARLY FURNISHED: Duco Cast Iron Body, Flashing Clamp and Loose Set Grate.

