

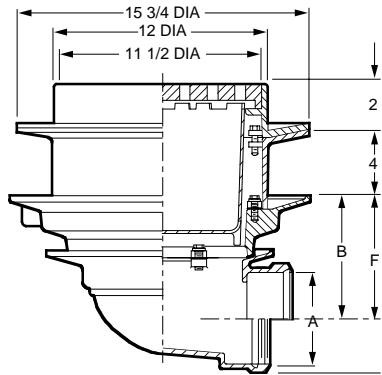


FLOOR DRAINS



FIG. 2247 DEEP BODY HEAVY DUTY FLOOR DRAIN WITH 12" TOP W/TRACTOR GRATE AND SOLID FREE STANDING SEDIMENT BUCKET

FUNCTION: Used in heavy traffic areas where debris is anticipated and must be intercepted. Large deep body and bucket are adaptable to areas where heavy flow and considerable debris are expected.



A OUTLET SIZE	TOP SIZE	FREE AREA SQ IN	B	†DUCO CI	DUCO CI PB TOP	DUCO CI NB TOP	APPROX. WEIGHT LBS
02"	12"	29	6 7/8"	1,657.00	2,052.00	2,114.00	70
03"	12"	29	6 3/8"	1,657.00	2,052.00	2,114.00	70
04"	12"	29	5 7/8"	1,657.00	2,052.00	2,114.00	70
05"	12"	29	5"	1,657.00	2,052.00	2,114.00	72
06"	12"	29	4 1/2"	1,657.00	2,052.00	2,114.00	72

REGULARLY FURNISHED: Duco Cast Iron Body and Flashing Collar with Cast Iron Grate and Solid Free Standing Sediment Bucket.

OUTLET VARIATIONS (Specify type of outlet and pipe size in inches.)

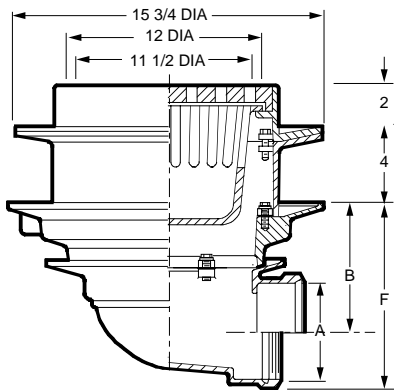
Outlet Type	Outlet Designation Outlet Type/Pipe Size	"F" Body HT. DIM.	ADD
Inside Caulk	C02	8 5/8"	N/C
	C03, C04	8 3/4"	N/C
	C05, C06	8 1/2"	N/C
Threaded	T02	8 5/8"	N/C
	T03, T04	8 3/4"	N/C
	T05, T06	8 1/2"	N/C
No-Hub	Y02, Y03, Y04		N/C
	Y05, Y06		See Fig. 2646Y

OPTIONS:

	ADD
-DG Deflector Grate	207.00
-FP Seepage Holes in Bucket	82.00
-G Galvanized CI	799.00
-M Ductile Iron Grate	161.00
-P Trap Primer Conn	99.00
-S Square Top, CI	208.00
-SC Solid Scoriated Cover	354.00
-SNB Square Top, add to CI	753.00
-SPB Square Top, add to CI	654.00
-U Vandal Proof Grate	89.00

FIG. 2248 DEEP BODY HEAVY DUTY FLOOR DRAIN WITH 12" TOP W/TRACTOR GRATE AND SUSPENDED SLOTTED SEDIMENT BUCKET

FUNCTION: Used in heavy traffic areas where debris is anticipated and must be intercepted. Large deep body and bucket are adaptable to areas where heavy flow and considerable debris are expected.



A OUTLET SIZE	TOP SIZE	FREE AREA SQ IN	B	†DUCO CI	DUCO CI PB TOP	DUCO CI NB TOP	APPROX. WEIGHT LBS
02"	12"	29	6 7/8"	1,657.00	2,052.00	2,114.00	70
03"	12"	29	6 3/8"	1,657.00	2,052.00	2,114.00	70
04"	12"	29	5 7/8"	1,657.00	2,052.00	2,114.00	70
05"	12"	29	5"	1,657.00	2,052.00	2,114.00	72
06"	12"	29	4 1/2"	1,657.00	2,052.00	2,114.00	72

REGULARLY FURNISHED: Duco Cast Iron Body and Flashing Collar with Cast Iron Grate and Suspended Slotted Sediment Bucket.

OUTLET VARIATIONS (Specify type of outlet and pipe size in inches.)

Outlet Type	Outlet Designation Outlet Type/Pipe Size	"F" Body HT. DIM.	ADD
Inside Caulk	C02	8 5/8"	N/C
	C03, C04	8 3/4"	N/C
	C05, C06	8 1/2"	N/C
Threaded	T02	8 5/8"	N/C
	T03, T04	8 3/4"	N/C
	T05, T06	8 1/2"	N/C
No-Hub	Y02, Y03, Y04		N/C
	Y05, Y06		See Fig. 2646Y

OPTIONS:

	ADD
-BS Bucket w/Mesh Screen	253.00
-DG Deflector Grate	207.00
-FP Seepage Holes in Bucket	82.00
-G Galvanized CI	799.00
-M Ductile Iron Grate	161.00
-P Trap Primer Conn	99.00
-S Square Top, CI	208.00
-SC Solid Scoriated Cover	354.00
-SNB Square Top, add to CI	753.00
-SPB Square Top, add to CI	654.00
-U Vandal Proof Grate	89.00

