

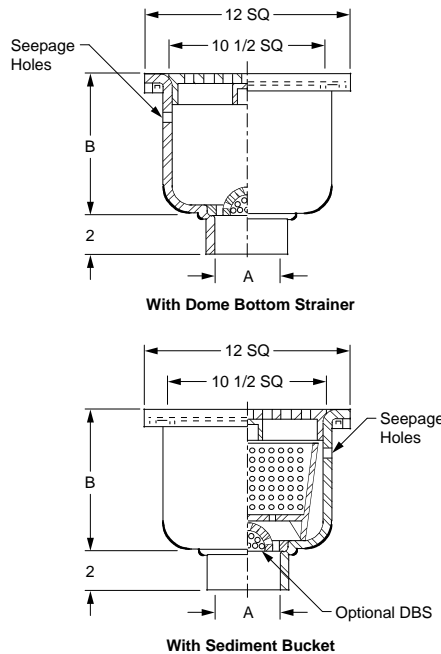


SPECIALTIES, STAINLESS AND CARBON STEEL

FIG. 9690 SERIES 14 GAGE STAINLESS STEEL FLOOR, AREA & INDIRECT WASTE DRAINS W/12" SQUARE TOP



FUNCTION: Used in nuclear and fossil fuel power stations, chemical plants, laboratories and other areas where the corrosion resistance of type 304 stainless steel is satisfactory for the intended service. Also used in other locations such as breweries, dairies, creameries and similar processing plants where superior corrosion resistance, durability and longevity are required. Excellent for use in restaurants, schools and all types of food handling areas for ultimate sanitation.



OUTLET VARIATIONS (Specify type of outlet and pipe size in inches.)

Outlet Type	Outlet Designation Outlet Type/Pipe Size	ADD
Butt Weld	BW02, BW03, BW04 Sched. -5	POA
	BW02, BW03, BW04 Sched. -10	POA
	BW02, BW03, BW04 Sched. -40	POA
Threaded	T02, T03, T04 Male or Female	POA
No-Hub	Y02, Y03, Y04	N/C

OPTIONS:	ADD
-C Flashing Clamp (Type 304)	POA
-LSH Less Seepage Control Holes	POA
-P Trap Primer Connection	POA
-U Vandal Proof Grate	POA
-316 Type 316 Stainless Steel Bodies and Grates	POA

Models with Buckets:

-BS	With Type 304 SS Mesh lined Bucket	POA
-DBS	With Type 304 SS Dome Bottom Strainer	POA
-SBP	With Type 304 SS Solid Bottom Ported Bkt	POA

OPTIONAL TOP GRATES FOR SPECIALIZED AND INDIRECT WASTE APPLICATIONS THE FOLLOWING ARE TYPE 304 (CF8) TYPE 316 (CF8M) GRATES ARE POA

	DEDUCT	
-10	Less Stainless Steel Grate	POA
		ADD
-12	With Type 304 SS 1/2 Grate	POA
-13	With Type 304 SS 3/4 Grate	POA
-14	With Type 304 SS Grate with 2 1/2" SQ Center Hole	POA
-15	With Type 304 SS Recessed Grate with Bar Handle	POA
-21	With Type 304 SS Grate with 4" DIA Type 304 SS Funnel	POA
-22	With Type 304 SS Grate with 6" DIA Type 304 SS Funnel	POA
-25	With Type 304 SS Grate with 8 1/4 x 3 1/4 x 4 1/2" High Oval Type 304 SS Funnel	POA
-41	With Type 304 SS Solid Cover	POA
-42	With Type 304 SS 1/2 Solid Cover	POA
-43	With Type 304 SS 3/4 Solid Cover	POA
-44	With Type 304 SS Solid Cover with 2 1/2" SQ Center Hole	POA
-61	With Type 304 SS Heelproof Ribbed Loose-set Non-tilt Grate with 1/4" Square Holes	POA
-62	With Type 304 SS Medium Duty Ribbed Loose-set Non-tilt Grate with 1/2" Square Holes	POA
-63	With Type 304 SS Medium Duty Ribbed Loose-set Non-tilt Grate with 1/4" Square Holes	POA
-64	With Type 304 SS Heavy Duty Ribbed Loose-set Non-tilt Grate with 1/2" Square Holes	POA
-66	With Type 304 SS Extra Heavy Duty Ribbed Loose-set Non-tilt Grate with 1/2" Square Holes	POA
-68	With Type 304 SS Extra Heavy Duty Ribbed Loose-set Non-tilt Grate with 3/4" Square Holes	POA
-69	With 1" Thick Underbolted NB Rim and Extra Heavy Duty Cast Type 304 SS Secured Grate	POA

FIG. NO. w/DOME STRAINER	A OUTLET SIZE	B SUMP DEPTH	TOP SIZE	†LESS FLANGE	WITH FLANGE	APPROX. WEIGHT LBS
9691	02", 03", 04"	4"	12" SQ	POA	POA	14
9692	02", 03", 04"	6"	12" SQ	POA	POA	17
9693	02", 03", 04"	8"	12" SQ	POA	POA	20
9694	02", 03", 04"	10"	12" SQ	POA	POA	23
FIG. NO. SEDIMENT BUCKET	A OUTLET SIZE	B SUMP DEPTH	TOP SIZE	†LESS FLANGE	WITH FLANGE	APPROX. WEIGHT LBS
9696	02", 03", 04"	4"	12" SQ	POA	POA	16
9697	02", 03", 04"	6"	12" SQ	POA	POA	19
9698	02", 03", 04"	8"	12" SQ	POA	POA	22
9699	02", 03", 04"	10"	12" SQ	POA	POA	25

REGULARLY FURNISHED:

14 Gage Type 304 SS Receptor Body with Seepage Control Holes, Cast Type 316 SS Ribbed Non-Tilt Loose Set Grate with 1/2" Square Holes. Perforated SS Dome Bottom Strainer or Sediment Bucket as Indicated by Figure Number.

SPECIALTIES

