

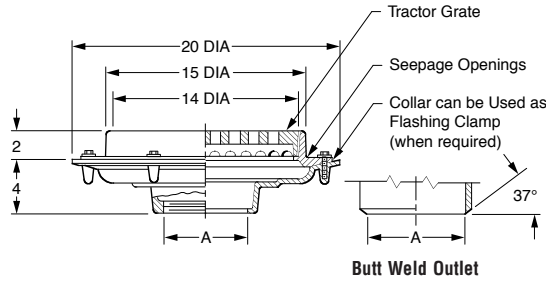


# SPECIALTIES, STAINLESS AND CARBON STEEL

## FIG. 9733 FLOOR DRAIN 15" ROUND TOP WITH HEAVY DUTY TRACTOR GRATE



**FUNCTION:** Used in areas where waste water contains no sediment or debris and construction requires a shallow body. Large top area permits use where high flow is anticipated.



**OUTLET VARIATIONS** (Specify type of outlet and pipe size in inches.)

Outlet Type	Outlet Designation Outlet Type/Pipe Size	ADD
Butt Weld	BW04, BW05, BW06, BW08 Specify Schedule 5, 10, †40, or 80	POA
Inside Caulk	C04, C05, C06, C08	POA
Threaded	T04, T05, T06, T08	POA

**OPTIONS:**

Option	Description	ADD
-M	Ductile Iron Grate	POA
-SF	Satin Finish Top	POA
		<b>DEDUCT</b>
-CIG	Cast Iron Grate	POA
-RB	Rough Bronze Grate	POA
-RNB	Rough NB Grate	POA

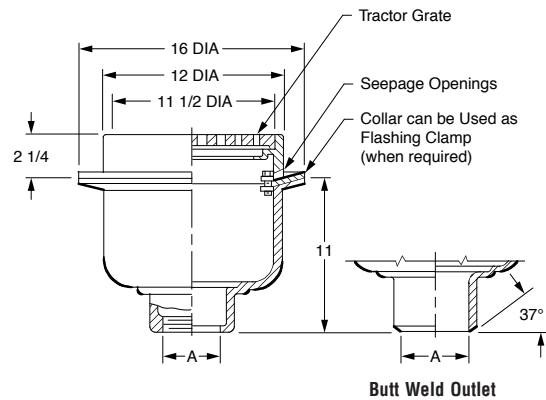
A OUTLET SIZE	FREE AREA SQ IN	†-CF8 (304) STAINLESS STEEL	-CF8M (316) STAINLESS STEEL	-A27 CARBON STEEL	APPROX. WT. LBS
04, 05"	44.95	POA	POA	POA	65
06, 08"	44.95	POA	POA	POA	65

**REGULARLY FURNISHED:** CF8 (Equivalent to Type 304) Rough Finish Stainless Steel Body, Flashing Collar with Seepage Openings and Tractor Grate .

SPECIALTIES

## FIG. 9734 FLOOR DRAIN 12" ROUND TOP WITH HEAVY DUTY TRACTOR GRATE

**FUNCTION:** Used in heavy traffic areas. Large deep body provides reservoir where heavy flow is expected, and where a corrosion resistant drain is required.



**OUTLET VARIATIONS** (Specify type of outlet and pipe size in inches.)

Outlet Type	Outlet Designation Outlet Type/Pipe Size	ADD
Butt Weld	BW03, BW04, BW05, BW06 Specify Schedule 5, 10, †40, or 80	POA
Inside Caulk	C03, C04, C05, C06	POA
Threaded	T03, T04, T05, T06	POA

**OPTIONS:**

Option	Description	ADD
-A27	Carbon Steel Grate	POA
-B	Sediment Bucket (Type 304)	POA
-CF8M	Type 316 SS Grate	POA
-M	Ductile Iron Grate	POA
-RG	Rough Stainless Grate (Type 304)	POA
-RNB	Rough NB Grate	POA
-SF	Satin Finish Top	POA
-U	Vandal Proof Screws	POA
		<b>DEDUCT</b>
-CIG	Cast Iron Grate	POA

A OUTLET SIZE	FREE AREA SQ IN	†-CF8 (304) STAINLESS STEEL	-CF8M (316) STAINLESS STEEL	-A27 CARBON STEEL	APPROX. WT. LBS
03, 04"	28.66	POA	POA	POA	83
05, 06"	28.66	POA	POA	POA	95

**REGULARLY FURNISHED:** CF8 (Equivalent to Type 304) Rough Finish Stainless Steel Body, Flashing Collar with Seepage Openings and Rough Bronze Tractor Grate.

FOR INFORMATION ON POA ITEMS, PLEASE CONTACT YOUR LOCAL JAY R. SMITH REPRESENTATIVE

