

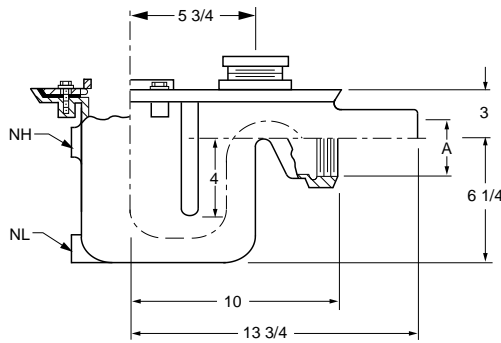


FLOOR DRAINS

FIG. 2040 SIDE OUTLET - DEEP TRAP FLOOR DRAIN WITH FLOOR CLEANOUT BODY AND COLLAR ASSEMBLY
FIG. 2041 SIDE OUTLET - DEEP TRAP FLOOR DRAIN WITH FLOOR CLEANOUT BODY AND COLLAR ASSEMBLY



FUNCTION: General service side outlet floor drain for use in showers, toilets, kitchens and other finished areas where foot traffic is expected.



OUTLET VARIATIONS (Specify type of outlet and pipe size in inches.)

Outlet Type	Outlet Designation	Outlet Type/Pipe Size	ADD
Spigot (2041)	S02, S03, S04		N/C
Threaded (2040)	T02, T03, T04		N/C

OPTIONS:

Option	Description	ADD
-NH	High Auxiliary Inlet (Specify 1 1/2 or 2")	209.00
-NL	Low Auxiliary Inlet (Specify 1 1/2 or 2")	209.00
-P050	1/2" Trap Primer Conn	99.00
-P075	3/4" Trap Primer Conn	99.00

A OUTLET SIZE	†DUCO CI	GALV CI -(G)	APPROX WEIGHT LBS.
02, 03, 04"	686.00	1,005.00	12

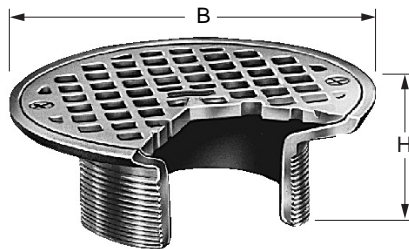
REGULARLY FURNISHED: Duco Cast Iron Body and Flashing Collar.

NOTE: For body with adjustable strainer head and 4" DIA funnel see Fig.3540-F11, 3541-F11 page 270.

FLOOR DRAINS

SUFFIX A - ADJUSTABLE STRAINER WITH ROUND GRATE

FUNCTION: Used in finished floors where foot traffic is anticipated.



OPTIONS:

-B	Sediment Bucket	65.00
-BFV	Ball Float Backwater Valve	230.00
-H	Hinged Grate (6, 7 and 8" only)	168.00
-HP	Heel Proof Grate	N/C
-U	Vandal Proof Screws	33.00
-V	Flapper Backwater Valve	230.00

List price for complete strainer & grate

A05NBSS	5" NB Str w/SS Top	729.00
A06NBSS	6" NB Str w/SS Top	740.00

B TOP SIZE	H	PB TOP	†NB TOP	CP TOP	APPROX. WEIGHT LBS
05"	2"	163.00	177.00	194.00	3
06"	2"	207.00	242.00	265.00	4
07"	2 1/4"	275.00	296.00	325.00	5
08"	2 1/2"	374.00	402.00	443.00	6
09"	2 1/2"	555.00	591.00	650.00	9
10"	2 3/4"	554.00	591.00	650.00	12

REGULARLY FURNISHED: Adjustable Round Strainer with Secured Grate.

