

## Bronze<sup>BX5</sup>

The slender BX5 represents a careful re-tuning of the acclaimed BR5 floor-standing model, adding further bandwidth and resolution to a recognised class act. Its sophisticated 2 1/2-way system of twin 140mm (5 1/2") C-CAM drivers and 25mm (1") C-CAM tweeter is perfected through a series of internal chambers providing the optimum operating environment for each driver and lending further rigidity to the cabinet. For such a modestly priced speaker, the BX5 is exceedingly coherent, having the transparency to expose the texture of complex musical passages and the control to communicate the natural dynamics of every performance. Astride the driver-matched BX Centre in a multichannel system, the BX5 will deliver a captivating blend of stratospheric highs, percussive mid-band and gripping bass extension for mesmerising three-dimensional AV fidelity.





## Bronze<sup>BX6</sup>

The flagship BX6 offers the fluid neutrality of the BX5 but brings the scale of its larger 2 1/2 way system into play. This potent configuration of twin 165mm (6 1/2") C-CAM bass drivers, single 165mm (6 1/2") C-CAM mid-bass driver and 25mm (1") C-CAM tweeter adds effortless authority to a long list of BX range virtues. The drivers work in tandem with a rigid multi-chamber structure to reveal greater muscularity and refinement in music and film sound. Still, the BX6 retains the elegant room-friendly proportions of the BX5 - its deceptively compact cabinet, finished in any of the beautiful BX vinyl wood finishes, will enhance the look of any environment.



## Bronze BXW-10

The BXW-10 subwoofer represents a significant step up from its predecessor, the highly regarded BRW10. It's as compact as its forerunner, but more potent in every respect. A new 10" C-CAM driver and 200 watt Class-D power amplifier have been devised in tandem to provide class-leading standards of control, speed and punch. Featuring a new, fully integrated switch mode power supply, the new amplifier develops considerably more power than its predecessor, adding grip and clean bass delivery below 30Hz. A range of beautiful vinyl wood finishes provides the superlative looks to complement its accomplished deep bass performance.





## Bronze<sup>BX</sup>centre

For the BX Centre we've demolished the limitations of entry-level design by creating a speaker that reproduces voice with unflinching detail and accuracy. Its system of twin 140mm (5 1/2") C-CAM drivers and 25mm (1") C-CAM tweeter complements the driver architecture of other BX series speakers, to create a wide and detailed front sound-stage, characterised by pin-point imaging.



## Bronze BX-FX

The versatile BX-FX dual-mode surround speaker adds the facility to switch dispersion for side or rear channel use, allowing the BX-FX to optimise five or seven channel systems. Utilising a single 140mm (5 1/2") C-CAM bass/mid-range driver flanked by two 25mm (1") C-CAM tweeters on angled baffles, the super-compact BX-FX is easy to position for amazing surround effects and is available in the BX range of finishes for a closer décor blend.



# Bronze**BX** Specifications



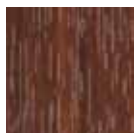
Black Oak



Walnut



Natural Oak



Rosemah



To discover how we reach music lovers all over the world, please visit:  
[monitoraudio.com](http://monitoraudio.com)