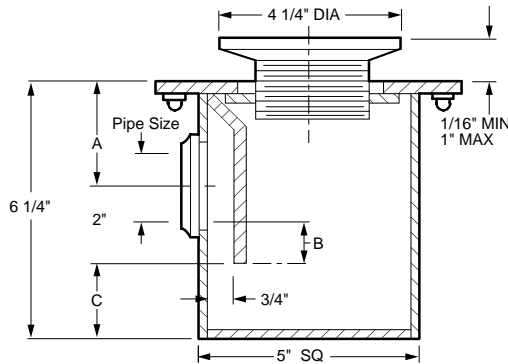




FLOOR DRAINS

FIG. 2016 PENAL USE VANDAL PROOF SHOWER DRAIN

FUNCTION: General service floor drain with internal trap seal and side outlet for use in prison cells.



OUTLET VARIATIONS (Specify type of outlet and pipe size in inches.)

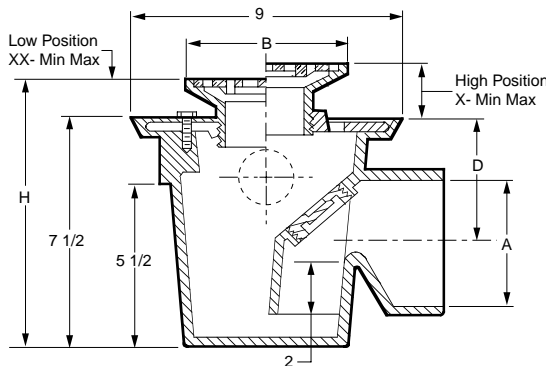
Outlet Type	Outlet Designation Outlet Type/Pipe Size	ADD
Threaded.....	T0150, T02, T03	N/C

OUTLET SIZE	A	B (TRAP SEAL)	C	†PB TOP	NB TOP	CP TOP	APPROX. WEIGHT LBS
0150"	2 1/2"	1 1/4"	1 3/4"	590.00	611.00	769.00	25
02"	2 1/2"	1"	1 3/4"	590.00	611.00	769.00	25
03"	3"	1/2"	1 1/4"	661.00	682.00	840.00	25

REGULARLY FURNISHED: Galvanized Fabricated Steel Body, Flanged Deck Top, Vandal Proof Polished Bronze Adjustable Strainer Head, Integral Trap and Threaded Outlet.

FIG. 2095 MULTI-INLET ADJUSTABLE FLOOR DRAIN WITH TRAP

FUNCTION: General service floor drain with internal trap seal and auxiliary inlets for use in showers, toilets, kitchens and other finished areas where foot traffic is expected. The optional auxiliary inlets allows for connecting of additional drain lines.



OUTLET VARIATIONS (Specify type of outlet and pipe size in inches.)

Outlet Type	Outlet Designation Outlet Type/Pipe Size	ADD
No-Hub.....	Y02, Y03, Y04	N/C

OPTIONS:

-G	Galvanized Cl	226.00
-N	Auxiliary Inlet (each).....	117.00
-U	Vandal Proof Grate.....	33.00

A OUTLET SIZE	B STRAINER SIZE	D	COLLAR IN HIGH POSITION X		COLLAR IN LOW POSITION XX		FREE AREA SQ. IN.	H MIN	†PB TOP	NB TOP	CP TOP	APPROX. WEIGHT LBS
			MIN	MAX	MIN	MAX						
02"	5" DIA.	3 3/16"	1 1/4"	2 1/4"	3/4"	1 5/8"	7	8 1/4"	675.00	688.00	704.00	35
03"	5" DIA.	3 11/16"	1 1/4"	2 1/4"	3/4"	1 5/8"	7	8 1/4"	675.00	688.00	704.00	35
04"	5" DIA.	4 3/16"	1 1/4"	2 1/4"	3/4"	1 5/8"	7	8 1/4"	675.00	688.00	704.00	35
02"	6" DIA.	3 3/16"	1 1/4"	2 1/4"	3/4"	1 5/8"	9	8 1/4"	716.00	751.00	748.00	36
03"	6" DIA.	3 11/16"	1 1/4"	2 1/4"	3/4"	1 5/8"	9	8 1/4"	716.00	751.00	748.00	36
04"	6" DIA.	4 3/16"	1 1/4"	2 1/4"	3/4"	1 5/8"	9	8 1/4"	716.00	751.00	748.00	36
02"	5" SQ.	3 3/16"	1 1/4"	2 1/4"	3/4"	1 5/8"	6.5	8 1/4"	751.00	784.00	810.00	35
03"	5" SQ.	3 11/16"	1 1/4"	2 1/4"	3/4"	1 5/8"	6.5	8 1/4"	751.00	784.00	810.00	35
04"	5" SQ.	4 3/16"	1 1/4"	2 1/4"	3/4"	1 5/8"	6.5	8 1/4"	751.00	784.00	810.00	35
02"	6" SQ.	3 3/16"	1 1/4"	2 1/4"	3/4"	1 5/8"	12.5	8 1/4"	809.00	830.00	870.00	36
03"	6" SQ.	3 11/16"	1 1/4"	2 1/4"	3/4"	1 5/8"	12.5	8 1/4"	809.00	830.00	870.00	36
04"	6" SQ.	4 3/16"	1 1/4"	2 1/4"	3/4"	1 5/8"	12.5	8 1/4"	809.00	830.00	870.00	36

REGULARLY FURNISHED: Duct Cast Iron Body with Integral Trap and 1" NPT Plug and Flashing Collar and Satin Nickel Bronze Adjustable Strainer Head as Indicated by Suffix Letter Selected.

†REGULARLY FURNISHED

