



# CLEANOUTS

## FIG. 4710, 4715 ROUND FACE-OF-WALL ACCESS COVER AND SCREW



**FUNCTION:** Used to conceal cleanout closures in walls. The round access cover is mounted on the surface of the finished wall and is directly secured by the screw to a tapping which must be provided in the cleanout plug. Shallow plates are preferred for all installations except where the cleanout plug protrudes beyond the finished wall surface, in which case the deep type cover must be used.

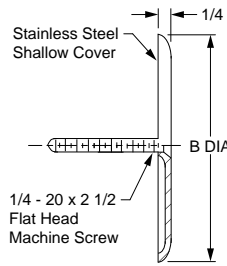


Fig. 4710

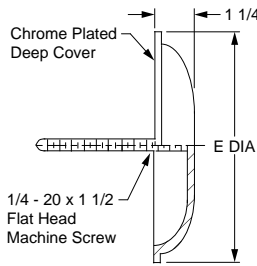


Fig. 4715

**OPTIONS:**

- LS 6" Long Center Screw ..... **28.00**
- LSU 6" Long Vandal Proof Center Screw ..... **85.00**
- U Vandal Proof Screw (1/4-20 X 2 1/2") ..... **58.00**

**ADD**

		PLUG SIZE	1 1/2", 2", 2 1/2"	3" 3 1/2", 4"	5"	6"	8", 10"	
4710	Shallow Cover	<b>COVER MATERIAL</b>	<b>B - COVER SIZE DIA:</b>					
		†Stainless Steel (-SS)	4 1/4"	5 1/2"	7"	9 1/4"	11 1/4"	
		Prime Coated Steel (-PC)	84.00	84.00	102.00	187.00	292.00	
		Polished Bronze (-PB)	58.00	58.00	77.00	161.00	266.00	
4715	Deep Cover	<b>COVER MATERIAL</b>	<b>E - COVER SIZE DIA:</b>					
		†Stainless Steel (-SS)	*7 1/4"	*7 1/4"	*7 1/4"	9 1/4"	11 1/4"	
		Chrome Plated (-CP) or Nickel Bronze (-NB)	-	-	207.00	-	-	
		Polished Bronze (-PB)	-	-	-	354.00	496.00	

\*Die formed SS cover only.

**REGULARLY FURNISHED:** Stainless Steel Shallow Cover or Chrome Plated Bronze Deep Cover with Center Screw as Indicated by Figure Number Selected.

## FIG. 4720, 4725 WALL ACCESS SECURED COVER WITH ROUND FRAME

**FUNCTION:** Used to cover cleanout plugs, valves, controls or equipment concealed in walls. The round design eliminates necessity for lining up with adjacent floors, ceilings, moldings, etc. The anchoring lugs provide easy means for securing the frame to the wall construction. The face-of-wall cover is for tile, masonry, or dry wall construction and is usually installed on an opening provided in the finished wall. The flush-with-wall cover is for plaster or wet wall construction and is installed during the wall construction.

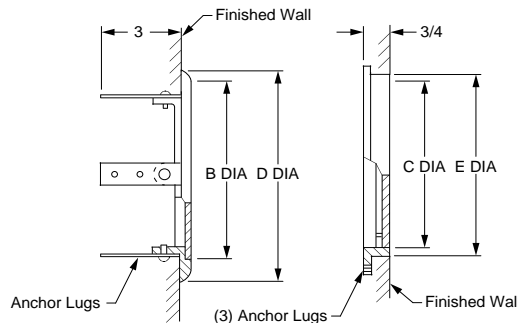


Fig. 4720

Fig. 4725

**OPTIONS:**

- U Vandal Proof Screws ..... **58.00**

**ADD**

		PLUG SIZE	2"	3"	4"	5"	6"	8"
4720	Face of Wall	<b>COVER MATERIAL</b>	<b>B - OPENING SIZE DIA:</b>					
		†Chrome Plated (-CP)	4"	5 1/2"	6"	8"	10"	-
		Nickel Bronze (-NB)	6"	7"	7 1/2"	10"	10"	-
		Polished Bronze (-PB)	242.00	242.00	242.00	242.00	408.00	-
4725	Flush With Wall	<b>COVER MATERIAL</b>	<b>C - OPENING SIZE DIA:</b>					
		†Chrome Plated (-CP)	4 1/2"	5 3/4"	6 1/2"	6 1/2"	8 1/2"	10 1/2"
		Nickel Bronze (-NB)	242.00	242.00	242.00	242.00	408.00	664.00
		Polished Bronze (-PB)	214.00	214.00	214.00	214.00	372.00	536.00
		<b>APPROX WT. LBS.</b>	2	4	5	7	7	8

**REGULARLY FURNISHED:** Chrome Plated Bronze Round Frame and Secured Cover. Type of Cover as Indicated by Figure Number Selected.

