

LC-151 Dual-Tech Outdoor Motion Sensor (Single PIR & Microwave) with Adjustable Pet Immunity

The LC-151 is a unique motion detector utilizing a single passive infra-red element and Microwave technology and is designed for outdoor use in the most severe climatic conditions. The LC-151 can also accommodate pets with the addition of optional pet immunity lenses. High reliability is achieved by combining both dual tech hardware with highly sophisticated software, greatly reducing the possibility of false alarms.

- Frequency: 10.525 GHz
- Microwave detection based on Doppler concept
- N.O. & N.C. relays switched at the same time
- Installation height is calibration free from 6 ft to 8 ft (1.8 m to 2.4 m)
- Pet Immune up to 33 lb (15 kg) without pet immunity lens or up to 80 lb (36 kg) when using supplied LC-F1-15X pet immunity lens
- PIR sensitivity adjustment
- MW intensity selection
- Temperature compensation
- Microcontroller signal processing
- Front and back tamper protection
- Unique waterproof and seal plastic design
- Detection range: up to 49 ft (15 m)
- Detects human intruders walking or running
- No maintenance required
- High RFI/EMI immunity
- Protection from: direct sunlight, wind up to 30m/sec, snow and rain, small animals, removal of top cover and removal from mounting bracket
- Rain and dust proof: IP65
- LC-B1-15X wall mount bracket available separately

Approval Listings: FCC/IC

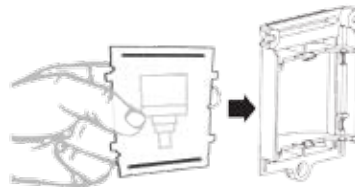


Model	Description
LC-151	Form 'C' alarm contact and tamper switches

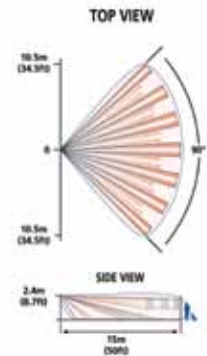
Wall mount bracket
LC-B1-15X



Corridor Lens
LC-L1-15X



Coverage Pattern



Corridor Lens Coverage Pattern
LC-L1-15X

