



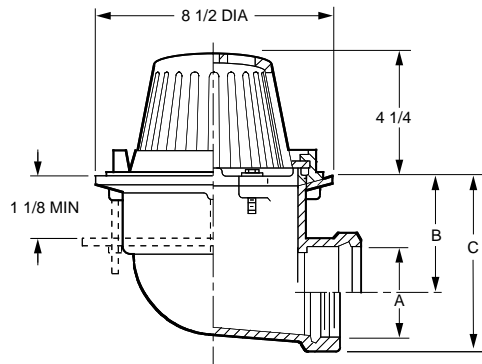
ROOF DRAINS

FIG. 1340 8 1/2" DIAMETER LOW PROFILE DOME



FUNCTION: Used in flat roofs, gutters or valleys of any construction. Small diameter pan is particularly adaptable to gutters and valleys where limited space is available. Flashing clamp holds flashing and roofing materials without puncturing. Low profile dome provides sufficient free area or quick drainage of rain water and protects the drain sump and connected piping from the intrusion of debris.

OUTLET VARIATIONS (Specify type of outlet and pipe size in inches.)



Outlet Type	Outlet Designation Outlet Type/Pipe Size	"C" Body HT. DIM.	ADD
Inside Caulk	C02, C03, C04	6 1/4"	N/C
Threaded	T02, T03, T04	6 1/4"	N/C
No-Hub	Y02, Y03, Y04	See Fig. 2646Y	

OPTIONS:

Option	ADD
-AD Aluminum Dome	109.00
-C Underdeck Clamp	90.00
-C2 Sec. Flash. Clamp	112.00
-CIDG Galvanized Cast Iron Dome	87.00
-CL Angular Underdeck Clamp	296.00
-E Ext. to 4" Per Inch, CI	52.00
-E04P 4" Perf SS Extension	281.00
-G Galvanized Cast Iron	120.00
-R Sump Receiver	156.00
-RBD Rough Bronze Dome	206.00
-SSM SS Mesh on Metal Dome	213.00
-U Vandal Proof Dome	69.00
-WD02 2" Solid Water Dam	117.00

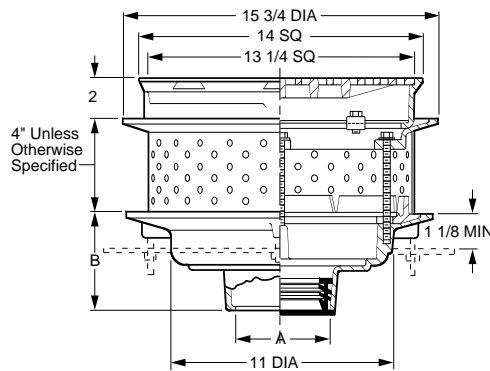
A OUTLET SIZE	FLANGE DIA.	B	FREE AREA SQ IN	†DUCO CI POLY DOME	DUCO CI CI DOME	APPROX. WEIGHT LBS
02"	8 1/2"	4 1/2"	41.5	432.00	432.00	30
03"	8 1/2"	4"	41.5	432.00	432.00	30
04"	8 1/2"	3 1/2"	41.5	432.00	432.00	30

REGULARLY FURNISHED: Duco Cast Iron Body with Combined Flashing Clamp and Gravel Stop with Polyethylene Dome.

FIG. 1409 PROMENADE DECK DRAIN

FUNCTION: Used in roof deck systems where the insulated membrane assembly method of waterproofing is provided. Used where built-up felt and asphalt waterproofing is installed on a flat roof construction which is designed for parking decks or promenades for recreational purposes.

OUTLET VARIATIONS (Specify type of outlet and pipe size in inches.)



Outlet Type	Outlet Designation Outlet Type/Pipe Size	"B" Body HT. DIM.	ADD
Inside Caulk	C02, C03, C04, C05, C06	5"	N/C
Speedi-Set SW	L02, L03, L04	5"	N/C
Speedi-Set XH	LXH02, LXH03, LXH04	5"	N/C
Threaded	T02, T03, T04, T05, T06	3 3/4"	47.00
No-Hub	Y02, Y03, Y04, Y05, Y06	5"	N/C

OPTIONS:

Option	ADD
-B Sediment Bucket	156.00
-C Aluminum Underdeck Clamp	146.00
-CL Angular Underdeck Clamp	296.00
-E Perf. Extension, to 4" Over 4", per inch	N/C 46.00
-G Galvanized Cast Iron	540.00
-HP Heelproof Grate	N/C
-M Ductile Iron Grate	373.00
-R Sump Receiver	164.00
-U Vandal Proof Grate	89.00
-W 3/8" Weep Holes in Collar (When "Loose-Set" pavers are required)	117.00

A OUTLET SIZE	TOP SIZE	FREE AREA SQ IN	†DUCO CI	DUCO CI PB TOP	DUCO CI NB TOP	APPROX. WEIGHT LBS
02, 03, 04"	14"	50.25	1,212.00	1,708.00	1,826.00	65
05, 06"	14"	50.25	1,395.00	1,891.00	2,009.00	72

REGULARLY FURNISHED: Duco Cast Iron Body, Perforated Stainless Steel Extension with Secondary Flashing Clamp, Cast Iron Top Frame and Heavy Duty Secured Grate.

