

VENDED

Top Load Washers



**Speed Queen®**

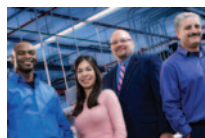
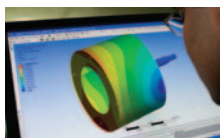


# BUILT FOR **RELIABLE** PERFORMANCE.

For more than a century, Speed Queen has built a legacy on providing equipment that stands up to any commercial laundry challenge. We make no compromises in performance. We refuse to be outdone in reliability and efficiency. Our commitment to quality is only matched by our commitment to your success. The result? The most profitable machines in the industry – bar none.

## REDUCED UTILITY COSTS

Our top load washers help keep your water usage low – using as little as 23.7 gallons per cycle. In addition, a 710 RPM final spin speed extracts more water from loads than many competing top load washers, reducing the energy costs associated with long drying times.



## RELIABLE, CONVENIENT OPERATION

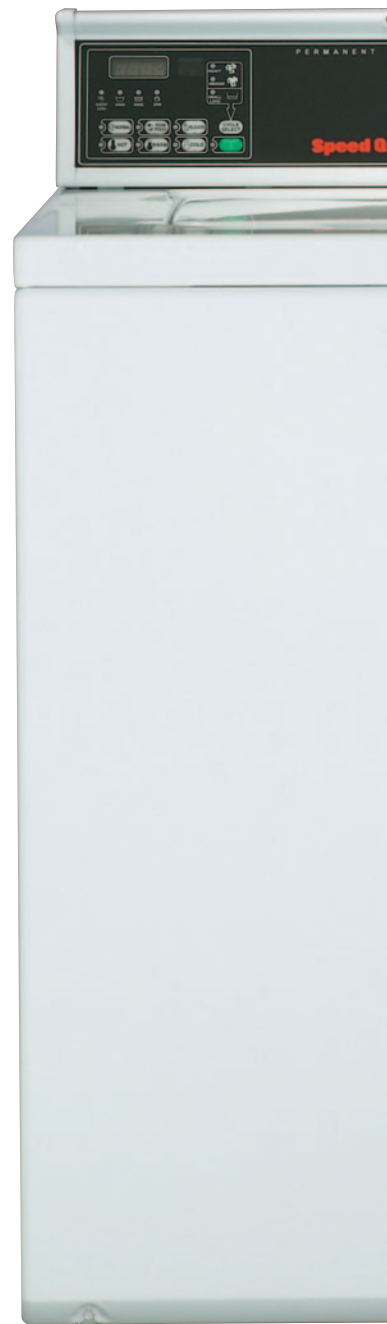
Our top load washers use a 210-degree wash stroke for unmatched cleaning results. Customers appreciate our simple, intuitive controls. Our durable stainless steel washtubs get smoother with each use, meaning they won't snag, pull or fray clothes, and our advanced Automatic Balance System ensures even the most out-of-balance loads continue to cycle completion with no stoppages.

## SECURE HIGH-CAPACITY COIN VAULTS

Speed Queen coin vaults feature a double-wrapped steel front and are secured to the washer top with heavy duty bolts. To accommodate higher vend prices and reduce the frequency of your collections, Speed Queen offers the option of larger capacity vaults.

## EXPERT FINANCING SOLUTIONS

Experience. Knowledge. Guidance. Speed Queen Financial Services has the tools to define a viable financial strategy, whether you're a first time investor or sophisticated entrepreneur. See for yourself how our progressive programs, successful track record and unbeatable laundry expertise can help you succeed. Visit [SpeedQueen.com/finance](http://SpeedQueen.com/finance) to learn more.



DEDICATED TO A HIGHER STANDARD.

## QUANTUM™ GOLD CONTROLS

There's never been a laundry control that's given you as much control of your laundry as Quantum™ Gold. With its network capabilities and off-site management features, you can operate your business on your terms – from anywhere at any time. You can program and audit your machines right from your PC, set time-of-day pricing over a year in advance to maximize your profits during peak hours, program your machines with a heavy wash option to generate incremental revenue and so much more. But the benefits that come with Quantum Gold's versatile features do more than satisfy your interests. Your customers will enjoy the free "lucky cycle" reward program and easy-to-operate control set.



## MICRO-DISPLAY CONTROL

Our Micro-Display Control (MDC) clearly displays the vend price and keeps customers informed throughout the wash process with cycle status lights and a digital cycle countdown. Interfacing with a variety of aftermarket card reader systems, MDC offers four cycle selections, basic audit features and comes installed with a single coin drop.

## E-Mech CONTROL

The E-Mech control features a straightforward design that offers customers simple water temperature and fabric selections, using cue lights to monitor progress through the wash cycle. This control is designed to function with any coin slide manufacturer's equipment.

**Speed Queen®**

# TOP LOAD WASHER SPECIFICATIONS

|  | Quantum Gold  | MDC (Micro-Display Control)                                    | Electromechanical  |
|--|---|--|--|
| Basket/Cylinder Volume - cu. ft. (liters)          | 3.16 (89)   | 2.8 (79)   | 2.8 (79)   |
| Width - in (mm)                                    | 25 5/8" (651)   | 25 5/8" (651)  | 25 5/8" (651)  |
| Depth - in (mm)                                    | 28" (711)   | 28" (711)  | 28" (711)  |
| Height* - in (mm)                                  | 43 (1092)   | 43 (1092)  | 43 (1092)  |
| Work Surface Height - in (mm)                      | 36" (914)   | 36" (914)  | 36" (914)  |
| Weight - lb (kg)                                   | 190 (86)  | 190 (86)   | 190 (86)   |
| Shipping Weight - lb (kg)                          | 210 (95)  | 210 (95)   | 210 (95)   |
| Cycle Time - minutes                               | Programmable  | 16-31  | 16-31  |
| Motor - HP   | 2-speed, 1/2 HP   | 2-speed, 1/2 HP  | SWT910, SWT911 - 1-speed, 1/2 HP<br>SWT820, SWT821 - 2-speed, 1/2 HP<br>SWT820, SWT821 |
| Water Consumption - gal. per cycle                 | 29.7  | 23.7   | 26.6   |
| Water Factor - gal. per cu. ft.                    | 9.4   | 8.8  | 9.5  |
| Modified Energy Factor (MEF)                       | 1.34  | 1.5  | 1.26   |
| Hot Water - gal. per cycle                         | 4.61  | 2.99   | 4.48   |
| Water Pressure - psi (bar)                         | Pressure fill – 20 to 120 (1.4/8.3)                     | Pressure fill – 20 to 120 (1.4/8.3)                            | Pressure fill – 20 to 120 (1.4/8.3)  |
| Spin Speed - RPM                                   | 2-spd, High 710, Low 473                                | 2-spd, High 710, Low 473                                       | 2-spd, High 710, Low 473   |
| Cycle/Temperature                                  | Hot<br>Warm<br>Cold<br>Normal<br>Perm Press<br>Delicate | Normal Hot<br>Perm Press Warm<br>Delicates Cold<br>Normal Warm | Hot<br>Warm<br>Cold<br>Normal<br>Perm Press<br>Delicate                                |
| Electrical Specifications and Circuit Requirements | 120/60/1-15 amp   | 120/60/1-15 amp  | 120/60/1-15 amp  |
| Agency Approval                                    | cUL <sub>us</sub>                                       | cUL <sub>us</sub>  | cUL <sub>us</sub>  |
| Activation   | Coin/Card-Operated                                      | Coin/Card-Operated   | Coin/Card-Operated   |
| Self-Adjusting Rear Legs                           | Yes   | Yes  | Yes  |
| Top and Lid Finish                                 | Porcelain   | Porcelain  | Porcelain  |
| Colors   | White, Bisque   | White, Bisque  | White, Bisque  |

\* Heights may vary slightly depending on leveling adjustments.

At Speed Queen, we're so confident that our heavy-duty commercial washers and dryers are built for reliable performance, that we're offering the following limited warranty to prove it:  
Through three years† — Any part of the washer, dryer or stack dryer. Through five years† — The washer transmission assembly, base and cabinet assembly including top, lid and door, against rust from inside out.  
Lifetime — The stainless steel washtub.

† Parts only. Labor not included. See Speed Queen Warranty Bond for specifics.

For the most accurate information, the installation guide should be used for all design and construction purposes. Due to continuous product improvements, design and specifications subject to change without notice. The quality management system of Alliance Laundry Systems' Ripon facility has been registered to ISO 9001:2008.

Printed in the U.S.A.

[speedqueen.com](http://speedqueen.com)

