

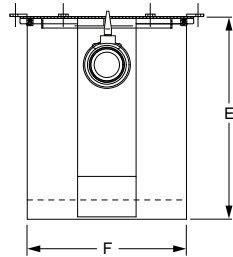


# INTERCEPTORS

**FIG. 8000GTX SERIES STEEL GREASE INTERCEPTORS W/SEMI-AUTOMATIC DRAW-OFF FOR RECESSED INSTALLATION**



**FUNCTION:** Used in kitchens, restaurants, institutions and all types of food processing areas where grease must be intercepted. This type of interceptor is of the same design as the Fig. 8000GT Series, which permits semi-automatic grease removal without removing the cover. The Fig. 8000GTX Series is designed for recessed installation; therefore, the conventional draw-off piping is not included, a flexible removable draw-off hose is used.

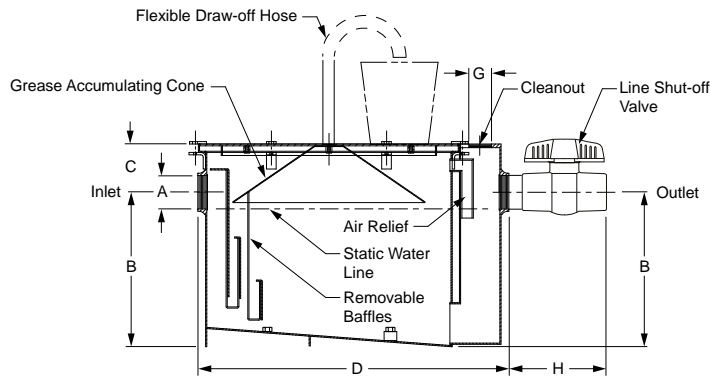


**Front View**

**OPTIONS:**

- Y With Bronze Line Shut-off Valve.....POA
- No-Hub Adaptor (2 req'd) ..... See Fig. 2646Y

**ADD**



**Side View**

**INTERCEPTORS**

FIGURE NO.	GPM FLOW RATE	GREASE CAP. LBS.	INLET & OUTLET SIZE A*	ROUGHING DIM			BODY		C.O PLUG SIZE G	LINE SHUT-OFF VALVE H	†DUCO COAT INSIDE AND OUTSIDE	ARC INSIDE OR OUTSIDE	ARC INSIDE AND OUTSIDE	APPROX. WT. LBS.
				B	C	D	E HEIGHT	F WIDTH						
8007GTX	07	14	02"	8 1/2"	3 1/4"	19"	12"	10 3/4"	2"	6 3/4"	5,598.00	8,340.00	10,820.00	95
8010GTX	10	20	02"	9 1/2"	3 3/4"	21 1/4"	13 1/4"	13"	2"	6 3/4"	6,621.00	9,418.00	11,950.00	110
8015GTX	15	30	02"	12"	3 1/2"	25"	15 1/2"	14"	2"	6 3/4"	7,053.00	10,283.00	12,973.00	145
8020GTX	20	40	03"	13"	4"	28 1/2"	17"	15 3/4"	2"	10"	9,068.00	12,819.00	15,773.00	130
8025GTX	25	50	03"	15 1/4"	4 1/2"	30"	19 3/4"	16 3/4"	2"	10"	10,519.00	14,420.00	17,581.00	150
8035GTX	35	70	03"	16"	5"	32 1/2"	21"	18 1/4"	2"	10"	10,791.00	14,832.00	18,201.00	180
8050GTX	50	100	03"	17 1/2"	6 3/4"	35 1/2"	24 1/4"	20 3/4"	2"	10"	12,320.00	16,563.00	20,234.00	205
8075GTX	75	150	04"	21 1/2"	15 1/2"	50"	37"	30 1/2"	3"	12 3/4"	14,656.00	18,333.00	23,158.00	250
<b>LOW TYPE</b>														
8120GTX	20	40	03"	7"	3 1/2"	38 1/2"	10 1/2"	21 3/4"	2"	10"	10,460.00	14,291.00	17,591.00	140
8135GTX	35	70	03"	7"	4 3/4"	49 1/2"	11 3/4"	27 3/4"	2"	10"	14,746.00	18,972.00	22,524.00	188
8150GTX	50	100	03"	10"	6"	49 1/2"	16"	27 3/4"	2"	10"	18,089.00	22,691.00	27,593.00	213

\*Available with larger inlet and outlet when specified. (Call for pricing)

**REGULARLY FURNISHED:** Steel Interceptor with Gray Duco Coating Inside and Outside with Steel Cone, Draw-off Hose and Cap, Line Shut-off Valve and Flow Control Fitting.

