

VENDED

Single Pocket Tumble Dryers

25 lb Tumble Dryer
30 lb Tumble Dryer

35 lb Tumble Dryer
55 lb Tumble Dryer

Speed Queen®

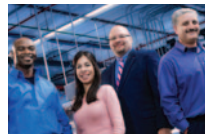
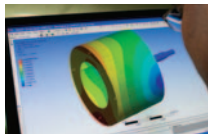


BUILT FOR **RELIABLE** PERFORMANCE.

For more than a century, Speed Queen has built a legacy on providing equipment that stands up to any commercial laundry challenge. We make no compromises in performance. We refuse to be outdone in reliability and efficiency. Our commitment to quality is only matched by our commitment to your success. The result? The most profitable machines in the industry — bar none.

REDUCED ENERGY COSTS

Speed Queen single pocket tumble dryers feature an axial airflow process that ensures heated air comes in contact with the load at the optimum time in the tumble process. It's the fastest, most efficient drying process on the market today. Plus, our high-performance burners ignite instantly, providing the desired temperature quickly and distributing heat evenly and efficiently.



DURABLE, WORRY-FREE OPERATION

Extra-large stainless steel doors and heavy-duty hinges ensure these machines will stand up to the repeated use of high-traffic vended laundries. Speed Queen tumble dryers feature an all-belt drive system, which means they're less noisy and cheaper to maintain. Our fine mesh lint screen is self-cleaning, depositing lint into a large storage area for easy, once-per-day removal. Our patented cylinder design allows drywall screws to pass through oval perforations, preventing damage to the metal surrounding the cylinder.

EXPERT FINANCING SOLUTIONS

Experience. Knowledge. Guidance. Speed Queen Financial Services has the tools to define a viable financial strategy, whether you're a first time investor or sophisticated entrepreneur. See for yourself how our progressive programs, successful track record and unbeatable laundry expertise can help you succeed. Visit SpeedQueen.com/finance to learn more.





DEDICATED TO A HIGHER STANDARD.

ACTIVATIONS

SINGLE DROP

This classic, easy-to-use all-metal design reduces coin jamming and easily accommodates reprogrammed changes in vend prices.

DUAL DROP

The dual drop offers both single dollar and \$.25 options, ideal for larger capacity machines.

AFTER-MARKET CARD READERS

We'll prep your machine for later installation of a card payment system, which increases customer loyalty due to its convenience and helps you avoid transporting large amounts of coins.



CONTROLS

QUANTUM™ GOLD

In addition to its network capabilities and off-site management features, Quantum™ Gold offers additional owner and customer benefits such as PC/PDA programming and machine audit capabilities, as well as time-of-day pricing of up to a year in advance, a free “lucky cycle” for loyal customers and the ability to interface with the store owner’s card manufacturer of choice. As gas prices continue to rise, Quantum Gold enables you to set dry cycle times right down to the second for maximum profitability.

MICRO-DISPLAY

Our Micro-Display Control (MDC) clearly displays the vend price and keeps customers informed throughout the drying process with cycle status lights and a digital cycle countdown. Interfacing with a variety of aftermarket card reader systems, MDC offers four cycle selections, basic audit features and comes installed with a single coin drop.

Speed Queen®

SINGLE POCKET TUMBLE DRYER SPECIFICATIONS

	ST025	ST030	ST035	ST055
Control	Quantum Gold, MDC	Quantum Gold, MDC	Quantum Gold, MDC	Quantum Gold, MDC
Dry Capacity- lb (kg)	25 (11.3)	30 (13.6)	35 (15.9)	55 (24.9)
Filling Ratio - lb (kg)	20:1 = 24 (10.9)	20:1 = 30 (13.6)	20:1 = 38 (17.4)	20:1 = 54 (24.6)
Width - in (mm)	28" (711)	28" (711)	31 1/2" (800)	34 1/2" (876)
Depth - in (mm)	40 7/8" (1038)	46 7/8" (1191)	46 7/8" (1191)	53 5/8" (1362)
Height - in (mm)	63 7/8" (1622)	63 7/8" (1622)	63 7/8" (1622)	66 3/4" (1695)
Cylinder Depth - in (mm)	24" (610)	30" (762)	30" (762)	35" (889)
Cylinder Diameter - in (mm)	26 1/2" (673)	26 1/2" (673)	30" (762)	33" (838)
Cylinder Volume - cu. ft. (liters)	7.7 (217)	9.6 (271)	12.3 (347)	17.3 (491)
Door Opening Size - in (mm)	22 11/16" (576)	22 11/16" (576)	22 11/16" (576)	26 7/8" (683)
Airflow - cfm (liter/sec)	60 Hz: 500 (236) 50 Hz: 430 (203)	60 Hz: 500 (236) 50 Hz: 430 (203)	60 Hz: 650 (307) 50 Hz: 550 (260)	60 Hz: 700 (330) 50 Hz: 600 (283)
Air Outlet Diameter - in (mm)	6" (152)	6" (152)	8" (203)	8" (203)
Energy Data	Gas 60Hz - 64,000 Btu/hr (18.8 kW) 50Hz - 64,000 Btu/hr (18.8 kW) Steam At 100 psi (6.9 bar): 3.9 BHP 135,000 Btu/hr (39.6 kW) Electric 12 kW	Gas 60Hz - 73,000 Btu/hr (21.4 kW) 50Hz - 73,000 Btu/hr (21.4 kW) Steam At 100 psi (6.9 bar): 3.9 BHP 134,700 Btu/hr (39.5 kW) Electric 21 kW	Gas 60Hz - 90,000 Btu/hr (26.4 kW) 50Hz - 90,000 Btu/hr (26.4 kW) Steam At 100 psi (6.9 bar): 4.8 BHP 166,000 Btu/hr (48.6 kW) Electric 24 kW	Gas 60Hz - 112,000 Btu/hr (32.8 kW) 50Hz - 102,000 Btu/hr (29.9 kW) Steam - - Electric 27 kW
Electrical Specifications	Gas and Steam 100/200-220/60/1; 2W+G 120/208-240/60/1; 2W/3W+G 200-208/240/60/3; 3W+G 380/60/3; 3W+G 460-480/60/3; 3W+G 100/200/50/1; 2W+G 230-240/50/1; 2W+G 200/50/3; 3W+G 230-240/50/3; 3W+G 380/50/3; 3W+G 400-415/50/3; 3W+G 380/400-415/50/3; 3W+G Electric 208/60/1; 3W+G 240/60/1; 3W+G 200/60/1; 2W+G 200-208/60/3; 3W+G 240/60/3; 3W+G 380/60/3; 3W+G 460-480/60/3; 3W+G 200/50/1; 2W+G 230-240/50/1; 2W+G 200/50/3; 3W+G 230-240/50/3; 3W+G 380/50/3; 3W+G 400-415/50/3; 3W+G	Amps 11.0/5.8 12.0/6.7 3.2/3.2 1.5 1.6 12.1/7.5 7.5 2.9 3.5 - - 1.5/1.6 108 94 108 62 54 33 27 105 95 60 55 33 31	Amps 11.0/5.8 12.0/6.7 3.2/3.2 1.5 1.6 12.1/7.5 7.5 2.9 3.5 - - 1.5/1.6 122 107 122 71 62 38 31 119 108 65 62 38 35	Amps 9.8/4.9 9.2/6.5 4.0/3.9 - - 10.0/6.2 5.5 - - 2.0 2.0 - 129 115 125 79 65 - - 131 119 - - 43 38
Motor Size - HP (W)	Fan 1/4 (187) Cylinder 1/4 (187)	1/4 (187) 1/4 (187)	1/4 (187) 1/4 (187)	1/2 (375) 1/2 (375)
Plumbing Connections	Gas 1/2" - NPT Steam 3/4" - NPT	1/2" - NPT 3/4" - NPT	1/2" - NPT 3/4" - NPT	1/2" - NPT -
Shipping Dimensions - Approx. - in (mm)	Width 30" (762) Depth 43" (1092) Height 69" (1753)	30" (762) 49" (1245) 69" (1753)	33" (838) 49" (1245) 69" (1753)	35 1/2" (902) 59" (1489) 72" (1829)
Net Weight - lb (kg)	300 (137)	331 (150)	361 (164)	435 (197)
Shipping Weight - lb (kg)	332 (151)	364 (165)	394 (179)	476 (216)
Agency Approvals	Gas CSA Star, CSA Flame, cCSAus, CE, Australia Gas Electrical & Steam cCSAus, CE	CSA Star, CSA Flame, cCSAus, CE, Australia Gas cCSAus, CE	CSA Star, CSA Flame, cCSAus, CE, Australia Gas cCSAus, CE	CSA Star, CSA Flame, cCSAus, CE, Australia Gas cCSAus, CE

Tumble dryer models are made to suit a variety of electrical service characteristics. See your Speed Queen distributor for specifications. For further details on installation, refer to Installation, Operation and Maintenance instructions supplied with the tumble dryer. Amperage ratings available in Installation Manual. For the most accurate information, the installation guide should be used for all design and construction purposes. Due to continuous product improvements, design and specifications subject to change without notice. The quality management system of Alliance Laundry Systems' Ripon facility has been registered to ISO 9001:2000.

Printed in the U.S.A.

speedqueen.com

