

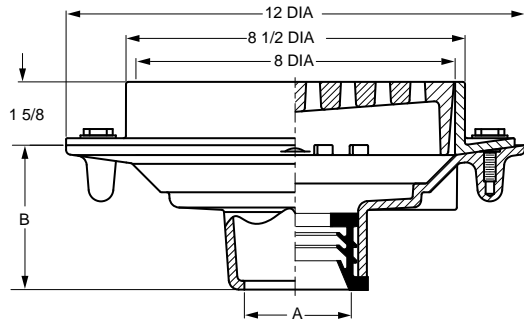


FLOOR DRAINS

FIG. 2120 HEAVY DUTY FLOOR DRAIN WITH 8 1/2" ROUND TOP W/ TRACTOR GRATE



FUNCTION: Used in heavy traffic areas where waste water contains no sediment or debris and floor construction requires shallow drain body. Body flange and flashing collar serve as anchor in on-grade locations and as flashing clamp when installed in waterproof floors.



A OUTLET SIZE	TOP SIZE	FREE AREA SQ IN	†DUCO CI	DUCO CI PB TOP	DUCO CI NB TOP	APPROX. WEIGHT LBS
02, 03, 04"	8 1/2"	13	405.00	671.00	743.00	21

REGULARLY FURNISHED: Duco Cast Iron Body and Flashing Collar with Cast Iron Tractor Grate.

OUTLET VARIATIONS (Specify type of outlet and pipe size in inches.)

Outlet Type	Outlet Designation	Outlet Type/Pipe Size	"B" Body HT. DIM.	ADD
Inside Caulk	C02, C03, C04		3 3/4"	N/C
Speedi-Set SW	L02, L03, L04		3 3/4"	N/C
Speedi-Set XH	LXH02, LXH03, LXH04		3 3/4"	N/C
Threaded	T02, T03, T04		2"	47.00
No-Hub	Y02, Y03, Y04		3 3/4"	N/C

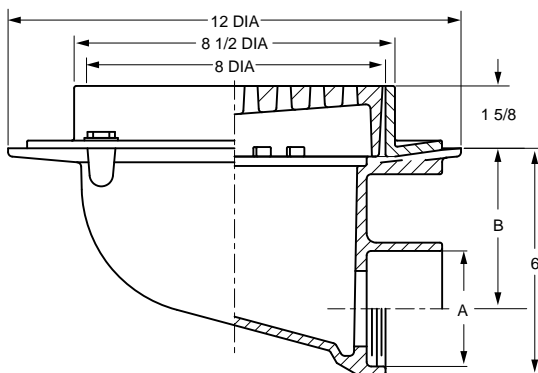
OPTIONS:

OPTION	DESCRIPTION	ADD
-B	Sediment Bucket	84.00
-BG	Galv Sediment Bucket	120.00
-DID*	Drain Installation Device	125.00
-FBS	Alum Flat Bottom Strainer	41.00
-G	Galvanized CI	259.00
-M	Ductile Iron Grate	131.00
-P	Trap Primer Conn**	99.00
-S	Square Top, CI	196.00
-SNB	Square Top, add to CI	571.00
-SPB	Square Top, add to CI	472.00
-U	Vandal Proof Grate	89.00
-XP	Closure Plug, 02", 03" 04"	238.00 400.00

*Requires body modifications. Must be shipped complete from the factory.
**Not available on 2120T Threaded Option.

FIG. 2125 HEAVY DUTY FLOOR DRAIN WITH 8 1/2" ROUND TOP W/TRACTOR GRATE

FUNCTION: Used in heavy traffic areas where waste water contains no sediment or debris and floor construction requires shallow drain body. Body flange and flashing collar serve as anchor in on-grade locations and as flashing clamp when installed in waterproof floors.



A OUTLET SIZE	TOP SIZE	FREE AREA SQ IN	B	†DUCO CI	DUCO CI PB TOP	DUCO CI NB TOP	APPROX. WEIGHT LBS
02"	8 1/2"	13	4 1/4"	667.00	933.00	1,005.00	21
03"	8 1/2"	13	3 3/4"	667.00	933.00	1,005.00	21
04"	8 1/2"	13	3 1/4"	667.00	933.00	1,005.00	21

REGULARLY FURNISHED: Duco Cast Iron Body and Flashing Collar with Cast Iron Tractor Grate.

OUTLET VARIATIONS (Specify type of outlet and pipe size in inches.)

Outlet Type	Outlet Designation	Outlet Type/Pipe Size	ADD
Inside Caulk	C02, C03, C04, C05, C06		N/C
Threaded	T02, T03, T04, T05, T06		N/C
No-Hub			SEE FIG. 2646Y

OPTIONS:

OPTION	DESCRIPTION	ADD
-B	Sediment Bucket	84.00
-BG	Galv Sediment Bucket	120.00
-G	Galvanized CI	259.00
-M	Ductile Iron Grate	131.00
-P	Trap Primer Conn	99.00
-S	Square Top, CI	196.00
-SNB	Square Top, add to CI	571.00
-SPB	Square Top, add to CI	472.00
-U	Vandal Proof Grate	89.00

