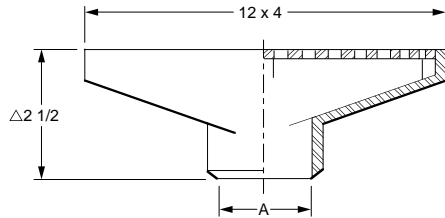




SPECIALTIES, STAINLESS AND CARBON STEEL

FIG. 9745 GUTTER DRAIN

FUNCTION: Used in gutters or other areas where a rectangular top is desired.



Δadd 1/8" for nickel bronze frame and grate.

A OUTLET SIZE	TOP SIZE	FREE AREA SQ IN	†-CF8 (304) STAINLESS STEEL	-CF8M (316) STAINLESS STEEL	-A27 CARBON STEEL	APPROX. WT. LBS
02, 03	12x4"	11.50	POA	POA	POA	10

REGULARLY FURNISHED: CF8 (Equivalent to Type 304)
Rough Finished Stainless Steel Body and Secured Stainless Steel Grate.

OUTLET VARIATIONS (Specify type of outlet and pipe size in inches.)

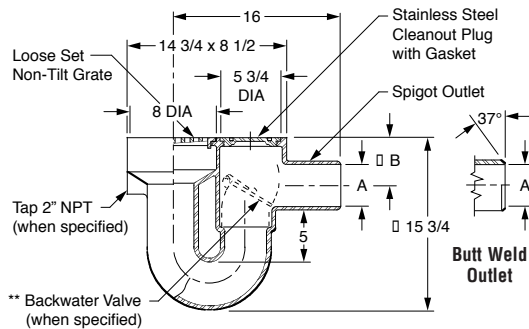
Outlet Type	Outlet Designation Outlet Type/Pipe Size	ADD
Butt Weld	BW02, BW03	POA
	Specify Schedule 5, 10, †40, or 80	

OPTIONS:		ADD
-U	Vandal Proof Screws	POA
-SF	Satin Finish Top	POA

SPECIALTIES

FIG. 9750 INTEGRAL TRAP DRAIN WITH FLOOR LEVEL CLEANOUT

FUNCTION: Used in moderate traffic areas where deep trap seal, floor level cleanout and shallow side outlet rough-in are required where limited space is available.



Δadd 1/4" when Nickel Bronze Top is specified.

A OUTLET SIZE	FREE AREA SQ IN	†-CF8 (304) STAINLESS STEEL	-CF8M (316) STAINLESS STEEL	-A27 CARBON STEEL	APPROX. WT. LBS
03, 04"	20.50	POA	POA	POA	21

REGULARLY FURNISHED: CF8 (Equivalent to Type 304)
Rough Finish Stainless Steel Body, Loose Set Non-Tilt Grate and Cleanout Plug with Gasket.

OUTLET VARIATIONS (Specify type of outlet and pipe size in inches.)

Outlet Type	Outlet Designation Outlet Type/Pipe Size	ADD
Butt Weld	BW03, BW04	POA
	Specify Schedule 5, 10, †40, or 80	
Spigot	S03, S04	POA

OPTIONS:		ADD
-N2	2" NPT Auxiliary Inlet	POA
-SF	Satin Finish Top	POA
-SEC	Secured Grate	POA
-SW	Spanner Wrench	POA
-U	Vandal Proof Screws	POA
-V	304 SS Backwater Valve	POA

		DEDUCT
-NB	NB Frame, Grate & CO Cover	POA

**** NOTE:** These valves offer protection against backwater surges. Backflow is prevented when not obstructed by debris or sludge. Use for gravity flow only, not pressurized application.

FOR INFORMATION ON POA ITEMS, PLEASE CONTACT YOUR LOCAL JAY R. SMITH REPRESENTATIVE

