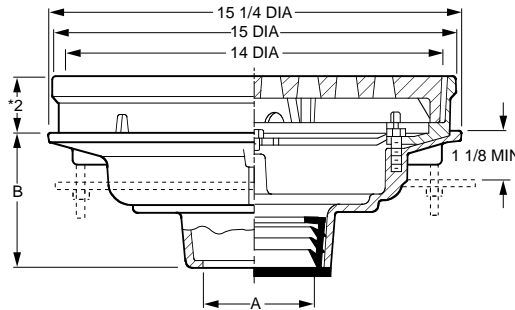




# ROOF DRAINS

## FIG. 1416 HEAVY DUTY ROOF DRAIN

**FUNCTION:** Used in heavy traffic areas, such as parking decks, where waste water contains no sediment or debris and construction requires a shallow body. Large top area permits use where high flow is anticipated.



A OUTLET SIZE	TOP SIZE	FREE AREA SQ IN	†DUCO CI	DUCO CI PB TOP	DUCO CI NB TOP	APPROX. WEIGHT LBS
02, 03, 04"	15"	45	953.00	2,356.00	2,517.00	47
05, 06"	15"	45	1,135.00	2,538.00	2,699.00	48
08"	15"	45	1,320.00	2,723.00	2,884.00	65

**REGULARLY FURNISHED:** Duco Cast Iron Body, Flashing Collar and Heavy Duty Tractor Grate.

### OUTLET VARIATIONS (Specify type of outlet and pipe size in inches.)

Outlet Type	Outlet Designation Outlet Type/Pipe Size	"B" Body HT. DIM.	ADD
Inside Caulk	C02, C03, C04, C05, C06	5"	N/C
	C08	6"	N/C
Speedi-Set SW	L02, L03, L04	5"	N/C
Speedi-Set XH	LXH02, LXH03, LXH04	5"	N/C
Threaded	T02, T03, T04, T05, T06	3 3/4"	47.00
	T08	5"	47.00
No-Hub	Y02, Y03, Y04, Y05, Y06	5"	N/C
	Y08	6"	N/C

### OPTIONS:

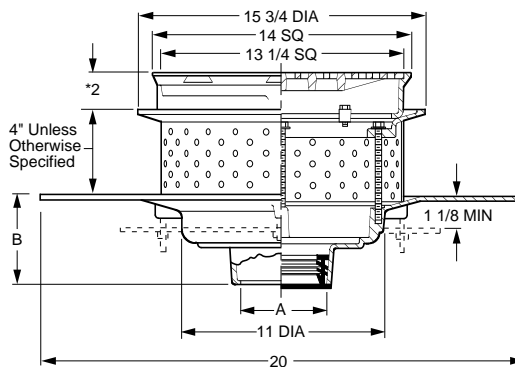
	ADD
-B Sediment Bucket	156.00
-C Aluminum Underdeck Clamp	146.00
-CL Angular Underdeck Clamp	296.00
-D Dome Grate, CI	244.00
-DNB Dome Grate, add to CI	2,109.00
-DPB Dome Grate, add to CI	1,910.00
-G Galvanized Body	666.00
-M Ductile Iron Grate	400.00
-R Sump Receiver	164.00
-S Square Top, CI	286.00
-SNB Square Top, add to CI	1,966.00
-SPB Square Top, add to CI	1,782.00
-U Vandal Proof Grate	89.00

**NOTE:** Floor drains or area drains used to drain areas subject to rainfall should have an open area equal to twice the cross sectional area of the connecting pipe.

\*Add 1/4" when bronze top is specified.

## FIG. 1419 PROMENADE DECK DRAIN FOR SPECIAL APPLICATIONS

**FUNCTION:** Used in roof deck systems where the insulated membrane assembly method of waterproofing is provided. Used where a liquid membrane waterproofing is installed on a flat roof construction which is designed for parking decks or promenades for recreational purposes.



A OUTLET SIZE	TOP SIZE	FREE AREA SQ IN	†DUCO CI	DUCO CI PB TOP	DUCO CI NB TOP	APPROX. WEIGHT LBS
02, 03, 04"	14"	50.25	2,014.00	2,510.00	2,628.00	47
05, 06"	14"	50.25	2,197.00	2,693.00	2,811.00	48

**REGULARLY FURNISHED:** Duco Cast Iron Body, Perforated Stainless Steel Extension, Cast Iron Top Frame and Heavy Duty Secured Grate.

### OUTLET VARIATIONS (Specify type of outlet and pipe size in inches.)

Outlet Type	Outlet Designation Outlet Type/Pipe Size	"B" Body HT. DIM.	ADD
Inside Caulk	C02, C03, C04, C05, C06	5"	N/C
	C08	6"	N/C
Speedi-Set SW	L02, L03, L04	5"	N/C
Speedi-Set XH	LXH02, LXH03, LXH04	5"	N/C
Threaded	T02, T03, T04, T05, T06	3 3/4"	47.00
	T08	5"	47.00
No-Hub	Y02, Y03, Y04, Y05, Y06	5"	N/C

### OPTIONS:

	ADD
-C Aluminum Underdeck Clamp	146.00
-CL Angular Underdeck Clamp	296.00
-E Perf Extension, to 4"	N/C
Over 4", per inch	46.00
-G Galvanized Cast Iron	759.00
-HP Heelproof Grate	N/C
-M Ductile Iron Grate	373.00
-U Vandal Proof Grate	89.00
-W 3/8" Weep Holes	117.00

(When "Loose-Set" pavers are required)

**NOTE:** Floor drains or area drains used to drain areas subject to rainfall should have an open area equal to twice the cross sectional area of the connecting pipe.

\*Add 1/8" when bronze top is specified.

