

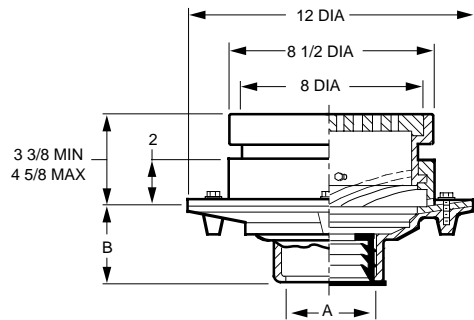


FLOOR DRAINS

FIG. 2320 MEDIUM DUTY FLOOR DRAIN WITH 8 1/2" ROUND ADJUSTABLE TOP AND TRACTOR GRATE



FUNCTION: Used in moderate traffic areas where waste water contains no sediment or debris and floor construction requires shallow drain body. Body flange and flashing collar serve as anchor in on-grade locations and as flashing clamp when installed in waterproof floors. Adjustable top collar permits accurate positioning of grate to meet finished floor level.



A OUTLET SIZE	TOP SIZE	FREE AREA SQ IN	†DUCO CI	DUCO CI PB TOP	DUCO CI NB TOP	APPROX. WEIGHT LBS
02, 03, 04"	8 1/2"	13	530.00	796.00	859.00	44

REGULARLY FURNISHED: Duco Cast Iron Body and Flashing Collar with Adjustable Top and Tractor Grate.

OUTLET VARIATIONS (Specify type of outlet and pipe size in inches.)

Outlet Type	Outlet Designation	Outlet Type/Pipe Size	"B" Body HT. DIM.	ADD
Inside Caulk	C02, C03, C04		3 3/4"	N/C
Speedi-Set SW	L02, L03, L04		3 3/4"	N/C
Speedi-Set XH	LXH02, LXH03, LXH04		3 3/4"	N/C
Threaded	T02, T03, T04		2"	47.00
No-Hub	Y02, Y03, Y04		3 3/4"	N/C

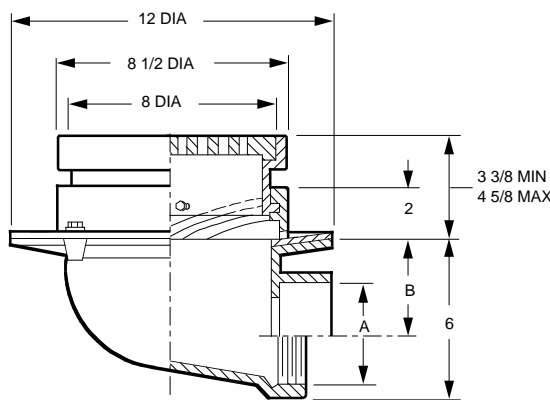
OPTIONS:

OPTION	DESCRIPTION	ADD
-AB	Aluminum Bucket	138.00
-ARI	ARC Inside	290.00
-ARIO	ARC In and Out	383.00
-B	Sediment Bucket	84.00
-DID*	Drain Installation Device	125.00
-E	Extension, ea 2" or fract	117.00
-FBS	Alum Flat Bottom Strainer	41.00
-FBSCI	Flat Bottom Strainer, CI	36.00
-G	Galvanized CI	329.00
-M	Ductile Iron Grate	131.00
-P	Trap Primer Conn	99.00
-S	Square Top, CI	196.00
-SC	Solid Scoriated Cover	294.00
-SNB	Square Top, add to CI	571.00
-SPB	Square Top, add to CI	472.00
-U	Vandal Proof Grate	89.00
-XP	Closure Plug, 02, 03" 04"	238.00 400.00

*Requires body modifications. Must be shipped complete from the factory.

FIG. 2325 MEDIUM DUTY FLOOR DRAIN WITH 8 1/2" ROUND ADJUSTABLE TOP AND TRACTOR GRATE

FUNCTION: Used in moderate traffic areas where waste water contains no sediment or debris and floor construction requires shallow drain body. Body flange and flashing collar serve as anchor in on-grade locations and as flashing clamp when installed in waterproof floors. Adjustable top collar permits accurate positioning of grate to meet finished floor level.



A OUTLET SIZE	TOP SIZE	FREE AREA SQ IN	B	†DUCO CI	DUCO CI PB TOP	DUCO CI NB TOP	APPROX. WEIGHT LBS
02"	8 1/2"	13	4 1/4"	792.00	1,058.00	1,121.00	44
03"	8 1/2"	13	3 3/4"	792.00	1,058.00	1,121.00	44
04"	8 1/2"	13	3 1/4"	792.00	1,058.00	1,121.00	44

REGULARLY FURNISHED: Duco Cast Iron Body and Flashing Collar with Adjustable Top and Tractor Grate.

OUTLET VARIATIONS (Specify type of outlet and pipe size in inches.)

Outlet Type	Outlet Designation	Outlet Type/Pipe Size	ADD
Inside Caulk	C02, C03, C04		N/C
Threaded	T02, T03, T04		N/C
No-Hub	Y02, Y03, Y04		See Fig 2646Y

OPTIONS:

OPTION	DESCRIPTION	ADD
-AB	Aluminum Bucket	138.00
-B	Sediment Bucket	84.00
-E	Extension, ea 2" or fract	117.00
-G	Galvanized CI	329.00
-M	Ductile Iron Grate	131.00
-P	Trap Primer Conn	99.00
-S	Square Top, CI	196.00
-SC	Solid Scoriated Cover	294.00
-SNB	Square Top, add to CI	571.00
-SPB	Square Top, add to CI	472.00
-U	Vandal Proof Grate	89.00

