



CLEANOUTS

FIG. 4910, 4915 SQUARE OR RECTANGULAR FRAMES W/SECURED COVER



FUNCTION: Used in concrete floors and surfaced areas subject to pedestrian or similar traffic to provide access to cleanouts, valves, controls or equipment. Particularly suitable for multiple installation of valves such as radiant heating balancing valves. Framing lugs are provided to attach to wood forms, arranged so form can be removed after concrete sets. Perforated flange keys into concrete, providing permanent anchor. Hinged covers are recommended for frequently used type of installations.

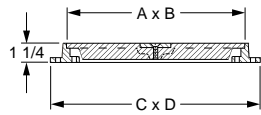


Fig. 4910

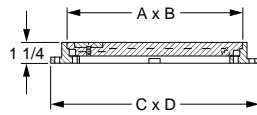


Fig. 4915

- OPTIONS:**
- U Vandal Proof Screws **ADD 58.00**
 - Cover Cast with words "Cleanout" (-CO), "Gas Shut Off" (-GSO) or "Water Shutoff" (WSO) **117.00**

| | A X B COVER SIZE | C X D | †ALL ROUGH ALUMINUM | POLISHED ALUMINUM (-PT) | STEEL DIAMOND PLATE (-HD) | APPROX. WEIGHT LBS |
|----------------------------------|------------------|----------|---------------------|-------------------------|---------------------------|--------------------|
| 4910 SECURED COVER | 06 x 06" | 08 x 08" | 213.00 | 290.00 | 435.00 | 3 |
| | 06 x 12" | 08 x 14" | 274.00 | 350.00 | 536.00 | 5 |
| | 09 x 09" | 11 x 11" | 377.00 | 467.00 | 615.00 | 6 |
| | 12 x 12" | 14 x 14" | 458.00 | 531.00 | 974.00 | 8 |
| | 15 x 15" | 17 x 17" | 824.00 | 952.00 | 1,614.00 | 11 |
| | 24 x 24" | 26 x 26" | 1,886.00 | 2,118.00 | 3,334.00 | 24 |
| 4915 HINGED SECURED COVER | 06 x 06" | 08 x 08" | 325.00 | 398.00 | 546.00 | 3 |
| | 09 x 09" | 11 x 11" | 504.00 | 578.00 | 1,208.00 | 6 |
| | 12 x 12" | 14 x 14" | 582.00 | 661.00 | 1,365.00 | 8 |
| | 15 x 15" | 17 x 17" | 1,007.00 | 1,131.00 | 1,723.00 | - |

REGULARLY FURNISHED: Plain Aluminum Frame and Secured Scoriated Cover with Lifting Device.

FIG. 4930, 4940 FLOOR ACCESS COVER W/SQUARE FRAME AND SECURED SCORIATED COVER

FUNCTION: Used in concrete floors and surfaced areas subject to normal foot traffic, to provide access to cleanouts, valves, controls or equipment. Hinged covers are recommended for frequently used types of installations.

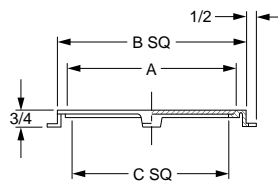


Fig. 4930

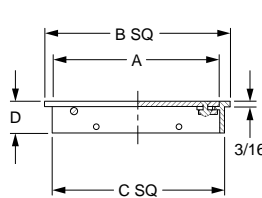


Fig. 4940

- OPTIONS:**
- ST Smooth Top **ADD N/C**
 - U Vandal Proof Screws (Fig. 4930 Only) **58.00**

| | | | | |
|----------------------------------|---------------------------|-----------------|-----------------|-----------------|
| 4930 SECURED COVER | A - COVER SIZE SQ: | 06 x 06" | 08 x 08" | 10 x 10" |
| | B - SQ: | 7" | 9" | 11" |
| | C - SQ: | 5 1/2" | 7 1/2" | 9 1/2" |
| COVER MATERIAL | †Nickel Bronze (-NB) | 367.00 | 540.00 | 582.00 |
| | Polished Bronze (-PB) | 319.00 | 471.00 | 505.00 |
| 4940 HINGED SECURED COVER | B - SQ: | - | 9" | 12" |
| | C - SQ: | - | 8 3/4" | 10 1/2" |
| | D | - | 1 1/2" | 3 3/4" |
| COVER MATERIAL | †Nickel Bronze (-NB) | - | 505.00 | 712.00 |
| | Polished Bronze (-PB) | - | 436.00 | 635.00 |
| | APPROX WT. LBS. | 14 | 18 | 26 |

REGULARLY FURNISHED: Square Nickel Bronze Frame and Secured Scoriated Cover or Hinged Scoriated Cover with Locking Device.

