

PR-50 Realtime Video Presenter

V-LINK

Stunning visual performances anywhere.

The PR-50 is a truly affordable video performance system designed for visual performances or video display in retail, concerts, churches, trade shows, and seminars.

Real time effects you can really use

Use a variety of video effects in real time, including switching effects for smooth transitions between video images, control of playback speed, resetting of retrigger points, and more.

Straightforward operation through the intuitive interface

Playback and switching images is easy - just select a clip on the large display. In edit mode you can easily capture video materials in various ways. Auto split captured clips or capture single frames.

Many ways to import video

Easily capture images from a DV or analog video deck or computer via the DV connection. Using the CD-ROM, optional card reader, or network connection you can import video material created on computer.

Built-in scheduler

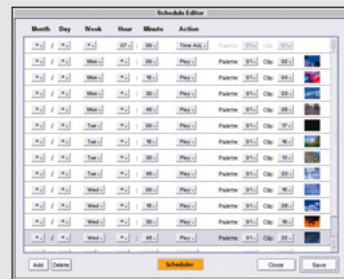
The scheduler lets the PR-50 automatically perform a variety of functions - playing back data, stopping, synchronizing times over a network, or starting up at a predetermined time.



■ Edit mode screen



■ Schedule editor



Play back and switch high quality DV images in real time.

The PR-50 is a unique video display and performance system designed for video display or visual performances used in retail, concerts, churches, trade shows, hotels, convention centers and seminars. The internal and removable hard-drive storage format is DV so display quality remains very high - ideal for plasma and large display applications.

Many ways to import video.

You can import video materials into a PR-50 from DV or analog video decks or via the DV output from a computer. The CD-ROM, network functions and digital video connections mean lossless transfer of video material or image stills created on computers and digital cameras.

Network port (10/100BASE-T).

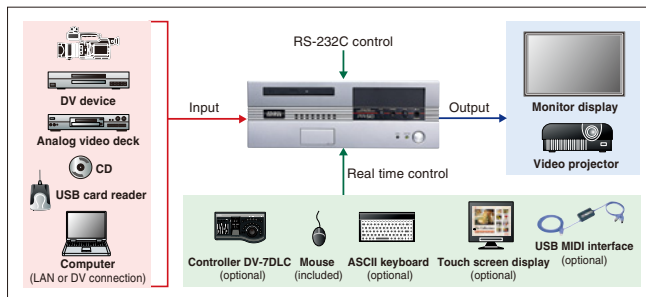
Using standard TCP/IP networking enables you to copy materials from computers connected to a network.

Many different external control options.

The PR-50 can be controlled in many different ways. Use the DV-7DLC controller (optional) or USB MIDI interface (optional), RS-232C port, optional touch screen or MIDI keyboard. With V-LINK it is easy to link video to musical performances. Create virtual clips of live video sources with the V-4 video mixer control, use multiple PR-50s and DV-7PRs synched via MIDI, work with multichannel audio sources from the Roland AR series and more.



Connections



V-LINK is a function that makes it easy to "perform video" in conjunction with music. It's easy to use a V-LINK compatible device to remotely control the PR-50. V-LINK lets you perform a wide variety of video effects that are linked with your musical performance.



Includes

80GB hard disk, Optical mouse, DV cable, DV-7DLC template sheet
*A display for windows PC (XGA 1,024x768 pixels) is required.

PR-50 Specifications

•Supported TV Systems: NTSC or PAL (Differing according to regional specifications) •Video Format: DV format •Audio Format: PCM (16-bit, 48kHz) •Input/Output Connectors (Front): Video input/output=DV Jack (i.LINK) 4-pin type (conforms to IEEE1394), Audio output, Headphones jack stereo 1/4 inch phone type (Rear): Video input/output=DV Jack (i.LINK) 4-pin type (conforms to IEEE1394), Video input, S-Video 4-pin mini DIN type (Y: 1.0Vp-p, C: 0.286Vp-p, 75ohm), Composite RCA phono type (1.0Vp-p, 75ohm), Audio input (L, R), RCA phono type, Video output, S-Video output 4-pin mini DIN type (Y: 1.0Vp-p, C: 0.286Vp-p, 75ohm), Composite RCA phono type (1.0Vp-p, 75ohm), Audio output (L, R), RCA phono type •Storage Devices: Internal Hard Disk Drive 80GB (for system program and data storage) •Expansion Slot: Removable Hard Disk 1 slot (for optional DV-HD series), CD-ROM Drive •Control Interfaces: PS/2 6-pin mini DIN type x 2 (for mouse and keyboard), LAN Port 10/100 Base-T x 1 •Serial Port: RS-232C x 1 •USB: A type x 4 (for optional controller, card reader, and MIDI interfaces) •Display Output: HD DB-15 type (Analog RGB, resolution 1024 x 768 fixed) •Power Supply: AC 117V, AC 230V, AC 240V (50/60Hz), AC 220V (60Hz) •Power Consumption: 90W •Dimensions: 360 (W) x 420 (D) x 130 (H) mm •Weight: 8.5kg •Accessories: Mouse (PS/2), Mouse Pad, DV Cable, DV-7DLC Template Sheet •Options: Video Editing Controller: DV-7DLC, Removable Hard Disk: DV-HD120, USB Card Reader: DL-CR1