

230V Network-Grade PDUs (Power Distribution Units)

Reliable rackmount power distribution for high-density, high-availability IT environments



- ▶ Load Meters, Network Interface and Remote Outlet Control Available
- ▶ Models Available with Single-Phase Input or 3-Phase Input
- ▶ Up to 45 Outlets
- ▶ 1U, 2U or 0U (Vertical) Rackmount Installation

RELIABLE POWER DISTRIBUTION

Tripp Lite network-grade PDUs distribute power from a UPS system, generator or wall outlet to multiple devices, including critical servers, storage and network/telecom equipment. There are four distinct PDU types: **Basic**, **Metered**, **Monitored** and **Switched**. Refer to the chart below to understand the features and benefits associated with each type.

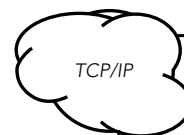
Tripp Lite PDU TYPES	Reliable Power Distribution	Local Current Metering	Remote Current Monitoring	Remote Outlet Power Control
SWITCHED PDUs Models Available: 10/16/32A 16A Single-Phase 3-Phase	●	●	●	●
MONITORED PDUs Models Available: 16/32A 16A Single-Phase 3-Phase	●	●	●	
METERED PDUs Models Available: 16/32A 16A Single-Phase 3-Phase	●	●		
BASIC PDUs Models Available: 16A Single-Phase	●			

NETWORK INTERFACE

Monitored and Switched PDUs include a network interface (RJ45 Ethernet) that enables remote monitoring and remote condition reporting via SNMP, Web, SSH or telnet. This interface allows you to prevent downtime by enabling automatic load threshold notification, to monitor ambient temperature and humidity via the optional ENVIROSENSE accessory and to centralize your power management with Tripp Lite's free PowerAlert Network Management System.



Monitored and/or Switched PDUs



Remote Workstation with PowerAlert Network Management System (See back page for additional information about PowerAlert.)

LOAD METER

Metered, Monitored and Switched PDUs display the connected equipment load (current draw) in amps. Monitored and Switched 3-Phase PDUs include an advanced multimode load meter that can display the PDU's IP address, the load for each bank/phase and the load for each outlet.



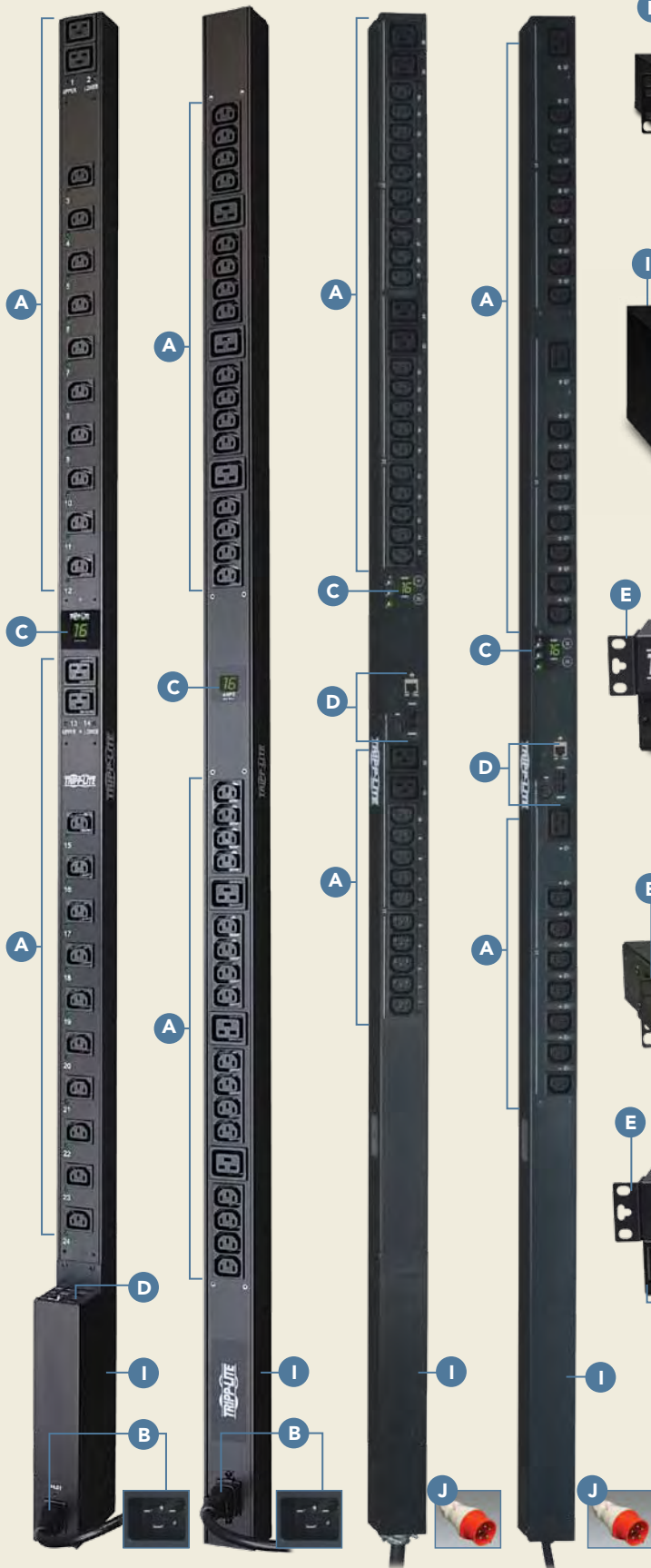
Load Meter

REMOTE OUTLET CONTROL

Switched PDUs allow remote control of individual outlets for remote rebooting, load shedding and more. Individual outlet control enables cycling of unresponsive devices from any distance, reducing the need for expensive and time-consuming trips to remote sites.



PowerAlert's Remote Outlet Control Interface

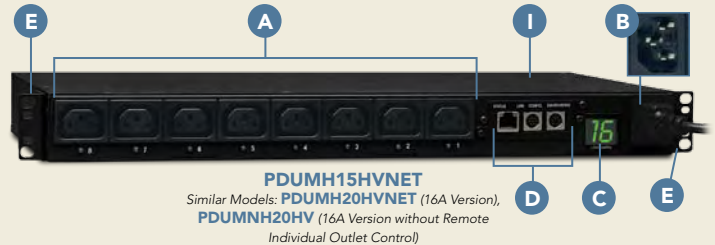


PDUV20HVNET
 Similar Models: **PDUMV32HVNET** (32A Version), **PDUMNV20HV** (Without Remote Individual Outlet Control)
 Also includes: **E G H**

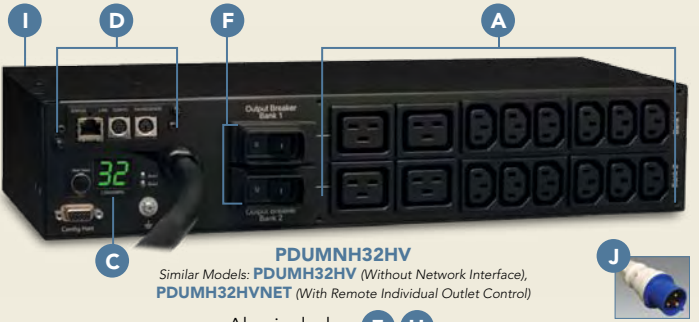
PDUV20HV
 Also includes: **E G H**

PDU3XVN10G16
 Similar Model: **PDU3XVN3G16** (With 1 m Cord)
 Also includes: **E G H**

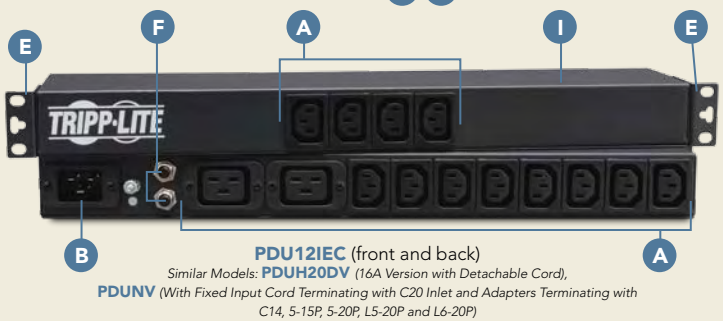
PDU3XVSR10G16
 Similar Model: **PDU3XVSR3G16** (With 1 m Cord)
 Also includes: **E G H**



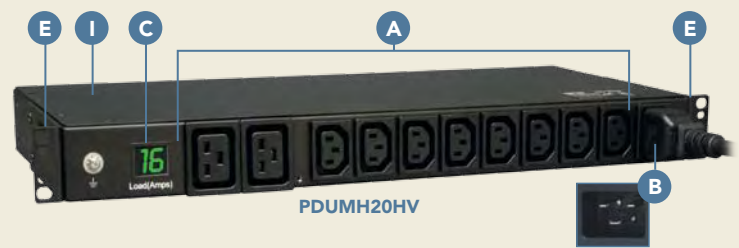
PDUMH15HVNET
 Similar Models: **PDUMH20HVNET** (16A Version), **PDUMNH20HV** (16A Version without Remote Individual Outlet Control)
 Also includes: **H**



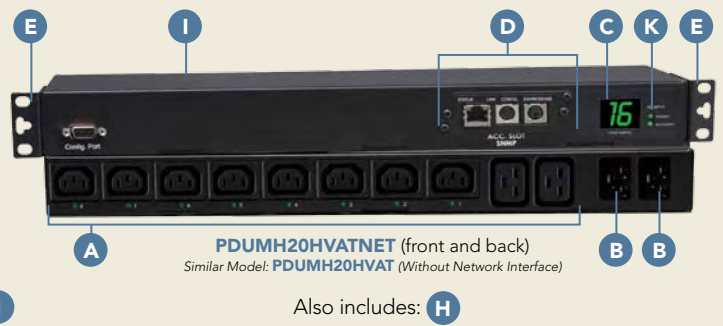
PDUMNH32HV
 Similar Models: **PDUMH32HV** (Without Network Interface), **PDUMH32HVNET** (With Remote Individual Outlet Control)
 Also includes: **E H**



PDU12IEC (front and back)
 Similar Models: **PDUH20DV** (16A Version with Detachable Cord), **PDUNV** (With Fixed Input Cord Terminating with C20 Inlet and Adapters Terminating with C14, 5-15P, 5-20P, L5-20P and L6-20P)



PDUMH20HV



PDUMH20HVATNET (front and back)
 Similar Model: **PDUMH20HVAT** (Without Network Interface)
 Also includes: **H**

PLUG AND OUTLET IDENTIFICATION

	PLUG	PLUG	PLUG	PLUG
	C14	C20	IEC-309 Blue 32A (2P+E)	IEC-309 Red 16A (3P+N+E)
	OUTLET	OUTLET	OUTLET	OUTLET
	C13	C19	IEC-309 Blue 32A (2P+E)	IEC-309 Red 16A (3P+N+E)

A AC Outlets

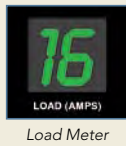
B AC Inlet (C14 or C20)

Connects to a user-supplied input power cord with a region-specific plug.



C Load Meter

Displays the connected equipment load (current draw) in amps. Monitored and Switched 3-Phase PDUs include an advanced multimode load meter that displays the PDU's IP address, the load for each bank/phase and the load for each individual outlet.



D Network Interface

Enables PDU management over Ethernet LAN or WAN via SNMP, a Web browser, SSH or telnet. Also supports remote monitoring of temperature, humidity and dry contacts via ENVIROSENSE accessory, sold separately.



E Removable Mounting Brackets

Support rackmount installation and surface mounting.

F Circuit Breakers

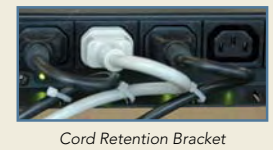
G Toolless Mounting Buttons

Support toolless OU (vertical) installation in compatible racks. Detachable 90° rotation brackets allow PDU outlets to face the rear of the rack for improved access and airflow.



H Removable Cord Retention Brackets

Secure power cords, reducing the risk of disconnection.



I Metal Housing

Maximizes durability and safety.

J Splash-Proof Plug

Splash-proof plug with IP44 protection rating connects to a compatible outlet.



K Automatic Transfer Switch (ATS)

The PDU includes primary and secondary AC inputs, which allows the PDU to automatically switch to the secondary input if the primary input deviates from the designated safe voltage/frequency range. ATS PDUs can provide power redundancy to single-cord devices or make any on-line UPS system hot-swappable. *Note: If the primary input is plugged into a UPS, it must be an on-line UPS.*

SPECIFICATIONS



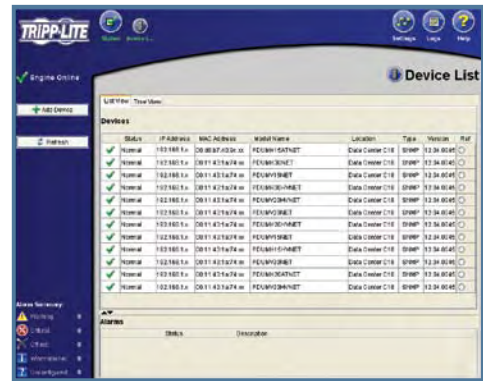
MODEL	NOMINAL VOLTAGE (50/60 HZ)	MAXIMUM INPUT CURRENT	METERS/ OUTPUT BANKS	AC INPUT CONNECTOR	OUTLETS (QUANTITY & TYPE)	RACK SPACE
3-PHASE SWITCHED PDUs (3-Phase Input, Single-Phase Output, Network-Grade Power Distribution, Load Meters, Network Interface and Remote Individual Outlet Control)						
PDU3XVSR10G16	Input: 3-Phase 400V Output: Single-Phase 230V	16A	1/3	IEC-309 Red 16A (3P+N+E) ⁽¹⁾ (3 m cord)	24 (21 C13+ 3 C19)	0U (178 cm long) ^(2,3)
PDU3XVSR3G16	Input: 3-Phase 400V Output: Single-Phase 230V	16A	1/3	IEC-309 Red 16A (3P+N+E) ⁽¹⁾ (1 m cord)	24 (21 C13+ 3 C19)	0U (178 cm long) ^(2,3)
3-PHASE MONITORED PDUs (3-Phase Input, Single-Phase Output, Network-Grade Power Distribution, Load Meters and Network Interface)						
PDU3XVN10G16	Input: 3-Phase 400V Output: Single-Phase 230V	16A	1/3	IEC-309 Red 16A (3P+N+E) ⁽¹⁾ (3 m cord)	36 (30 C13 + 6 C19)	0U (178 cm long) ^(2,3)
PDU3XVN3G16	Input: 3-Phase 400V Output: Single-Phase 230V	16A	1/3	IEC-309 Red 16A (3P+N+E) ⁽¹⁾ (1 m cord)	36 (30 C13 + 6 C19)	0U (178 cm long) ^(2,3)
3-PHASE METERED PDUs (3-Phase Input, Single-Phase Output, Network-Grade Power Distribution and Load Meters)						
PDU3XMV6G20	Input: 3-Phase 400V Output: Single-Phase 230V	16A	3/3	IEC-309 Red 16A (3P+N+E) ⁽¹⁾ (2 m cord)	45 (36 C13 + 9 C19)	0U (178 cm long) ^(2,3)
SINGLE-PHASE SWITCHED PDUs (Network-Grade Power Distribution, Load Meters, Network Interface and Remote Outlet Control)						
PDUMH15HVNET	220/230/240V	10A	1/1	C14 inlet ^(4,5)	8 (C13)	1U
PDUMH20HVNET	220/230/240V	16A	1/1	C20 inlet ^(4,6)	8 (C13)	1U
PDUMH20HVATNET	220/230/240V	16A	1/1	2 x C20 inlet ^(4,7)	10 (8 C13 + 2 C19)	1U
PDUMH32HVNET	220/230/240V	32A	1/2	IEC-309 Blue 32A (2P+E) ⁽¹⁾	16 (C13)	2U
PDUMV20HVNET	220/230/240V	16A	1/1	C20 inlet ⁽⁴⁾	24 (20 C13 + 4 C19)	0U (163 cm long) ^(2,3)
PDUMV20HVNET2	220/230/240V	16A	1/1	C20 inlet ⁽⁴⁾	8 (7 C13 + 1 C19)	0U (99 cm long) ^(2,3)
PDUMV32HVNET	220/230/240V	32A	1/2	IEC-309 Blue 32A (2P+E) ⁽¹⁾	24 (20 C13 + 4 C19)	0U (178 cm long) ^(2,3)
SINGLE-PHASE MONITORED PDUs (Network-Grade Power Distribution, Load Meters and Network Interface)						
PDUMNH20HV	220/230/240V	16A	1/1	C20 inlet ⁽⁴⁾	8 (C13)	1U
PDUMNH32HV	220/230/240V	32A	2/2	IEC-309 Blue 32A (2P+E) ⁽¹⁾	16 (12 C13 + 4 C19)	2U
PDUMNV20HV	220/230/240V	16A	1/1	C20 inlet ^(4,2)	24 (20 C13 + 4 C19)	0U (163 cm long) ^(2,3)
PDUMNV20HV2	220/230/240V	16A	1/1	C20 inlet ⁽⁴⁾	20 (18 C13 + 2 C19)	0U (90 cm long) ^(2,3)
SINGLE-PHASE METERED PDUs (Network-Grade Power Distribution and Load Meters)						
PDUMH20HV	220/230/240V	16A	1/1	C20 inlet ^(4,6)	10 (8 C13 + 2 C19)	1U
PDUMH20HVAT	220/230/240V	16A	1/1	2 x C20 inlet ^(4,7)	10 (8 C13 + 2 C19)	1U
PDUMH32HV	220/230/240V	32A	2/2	IEC-309 Blue 32A (2P+E) ⁽¹⁾	18 (16 C13 + 2 C19)	2U
PDUMV20HV	220/230/240V	16A	1/1	C20 inlet ⁽⁴⁾	38 (32 C13 + 6 C19)	0U (162 cm long) ^(2,3)
SINGLE-PHASE BASIC PDUs (Network-Grade Power Distribution)						
PDU12IEC	220/230/240V	16A	0/1	C20 inlet ⁽⁴⁾	14 (12 C13 + 2 C19)	1U or 0U (44 cm long) ⁽²⁾
PDU1NV	220/230/240V	16A	0/1	C20 inlet ^(4,8)	14 (12 C13 + 2 C19)	1U or 0U (44 cm long) ⁽²⁾
PDUH20DV	220/230/240V	16A	0/1	C20 inlet ^(4,9)	14 (12 C13 + 2 C19)	1U or 0U (44 cm long) ⁽²⁾
HOT-SWAP PDUs (Dual Inputs and Manual Transfer Switch Add Hot-Swap Capability to Compatible UPS Systems up to 3 kVA)						
PDUBHV10	220/230/240V	10A	0/1	2 x C14 inlet ^(4,10)	8 (C13) ⁽¹²⁾	2U ⁽¹⁴⁾
PDUBHV20	220/230/240V	16A	0/1	2 x C20 inlet ^(4,11)	8 (6 C13 + 2 C19) ⁽¹³⁾	2U ⁽¹⁴⁾

Certifications vary by model. (1) Splash-proof plug (IP44 protection rating). (2) 0U represents vertical rack installation. (3) Includes toolless mounting buttons. (4) Connect each inlet to a user-supplied input power cord with a region-specific plug if required. (5) Includes detachable 198 cm input cord with C14 plug. (6) Includes detachable 259 cm input cord with C20 plug. (7) Includes primary and secondary AC inputs. Also includes two 366 cm input cords with C20 plugs. (8) Includes 305 cm input cord with C20 plug. (9) Includes 366 cm cord with C20 plug. (10) Includes two 183 cm input cords (one fixed cord for UPS input and one detachable cord for utility input) with C14 plugs. (11) Includes one fixed 183 cm input cord (for UPS input) and one detachable 152 cm input cord (for utility input) with C20 plugs. (12) Also has C13 outlet for UPS connection. (13) Also has C19 outlet for UPS connection. (14) Shallow depth allows the PDU to fit behind select UPS systems without using additional rack space.

CENTRALIZED POWER MANAGEMENT WITH POWERALERT NMS

PowerAlert NMS (Network Management System) software is included with Monitored and Switched PDUs, allowing IT managers to access all PDU functions from any location. PowerAlert NMS can auto-discover and manage hundreds of Monitored or Switched PDUs and associated environmental sensors (model ENVIROSENSE, sold separately) over the network from a single interface.

- **Monitor PDUs remotely**, including load levels, other power conditions, environmental conditions and more. Receive alerts via e-mail, text-messaging or SNMP if values exceed user-defined alarm thresholds.
- **Mass-configure PDUs** with pre-defined settings or firmware updates.
- **Log power events and data** according to user-defined parameters.
- **Reboot unresponsive devices** from any distance, reducing the need for expensive and time-consuming trips to remote sites. (Switched PDUs)
- **Shed nonessential loads** automatically during power failures to increase the runtime of critical systems. (Switched PDUs)
- **Prevent unauthorized loads** by locking out unused outlets. (Switched PDUs)
- **Schedule equipment idling** to reduce power costs by turning off selected devices during off-hours. (Switched PDUs)



PowerAlert Network Management System

POWER CORDS & ACCESSORIES

Model	Plug	Outlet	Length	Rating	Description
P004-002-5	C14	C13	0,6 m	10A / 100-250V	Cord (5-Pack)
P004-002-13LA	C14	C13 (90° Left)	0,6 m	10A / 100-250V	Cord
P004-002-13RA	C14	C13 (90° Right)	0,6 m	10A / 100-250V	Cord
P005-002	C14	C13	0,6 m	15A / 100-250V	Cord
P005-006	C14	C13	1,8 m	15A / 100-250V	Cord
P005-010	C14	C13	3 m	15A / 100-250V	Cord
P047-002	C14	C19	0,6 m	15A / 100-250V	Cord
P047-004	C14	C19	1,2 m	15A / 100-250V	Cord
P047-006	C14	C19	1,8 m	15A / 100-250V	Cord
P047-010	C14	C19	3 m	15A / 100-250V	Cord
P036-002	C20	C19	0,6 m	20A / 100-250V	Cord
P036-002-19LA	C20	C19 (90° Left)	0,6 m	20A / 100-250V	Cord
P036-002-19RA	C20	C19 (90° Right)	0,6 m	20A / 100-250V	Cord
P036-006	C20	C19	1,8 m	20A / 100-250V	Cord
P032-007	C20	C13	2,1 m	20A / 100-250V	Cord
P056-006	BS1363	C13	1,8 m	5A / 200-250V	Cord
P052-008	BS1363	C19	2,4 m	13A / 200-250V	Cord
P054-006	CEE 7/7	C13	1,8 m	10A / 200-250V	Cord
P050-008	CEE 7/7	C19	2,4 m	16A / 200-250V	Cord
P070-010	IEC-309 Blue (2P + E)	C19	3 m	16A / 200-250V	Cord
UNIPLUGINT	C14	Wonpro*	2,5 cm	10A / 100-250V	Adapter

* The Wonpro universal outlet is compatible with most household plugs worldwide.

Model	Description
ENVIROSENSE	Remote environmental sensor for Monitored and Switched PDUs. Monitors ambient temperature and humidity. Also monitors and controls alarm, security and telecom devices through contact closure communications. Can monitor up to three additional environmental sensors. Connects to optional SRSWITCH magnetic switch kit for rack enclosure door entry detection. 3,6 m connection cord.
SRSWITCH	Magnetic switch kit. Includes two entry detection switches for rack enclosure doors. Requires ENVIROSENSE.
P350-10N-10	10-pack of reusable black hook-and-loop cable ties. 25 cm x 1,6 cm.

ABOUT TRIPP LITE

Since 1922, Tripp Lite has established a global reputation for quality manufacturing, superior value and excellent service. Tripp Lite makes more than 2500 products to power, protect and connect electronic equipment, including UPS systems, replacement batteries, PDUs, rack systems, cooling solutions, surge suppressors, IP console servers, KVM switches, cables, laptop accessories, power strips and inverters. Learn more at www.tripplite.com.



Tripp Lite World Headquarters

1111 W. 35th Street, Chicago, IL 60609 USA • +1.773.869.1212 • www.tripplite.com

Tripp Lite América Latina (Miami): +1.305.406.2523 • info_la@tripplite.com

Tripp Lite Middle East (Dubai): +971.4.887.1633 • salesint@tripplite.com

Tripp Lite Russia (Moscow): +7.495.799.56.07 • inforu@tripplite.com

Tripp Lite United Kingdom: +44.01276.516838 • salesint@tripplite.com