

MODEL 37

1.5% LOW PRESSURE GAUGES

Designed for use where pressure of less than 10 psi is to be measured.



SPECIFICATIONS:

| | |
|----------------------|--|
| Dial Size: | 4" |
| Accuracy: | ±1.5% FS - ANSI Grade A |
| Case: | 304SS |
| Bezel: | 304SS Bayonet Lock Type |
| Socket: | 316SS |
| Capsule: | 316SS |
| Movement: | Brass |
| Lens: | Laminated Safety Glass |
| Pointer: | Aluminum |
| Dial: | Heavy Gage Aluminum |
| Adjustment:: | Adjustable Set Screw |
| Connection: | 1/4" or 1/2" NPT Lower & Lower Back (Fully Welded) |
| Range: | See Range Chart |
| Protection Standard: | IP65 in accordance with NF EN 60529 |

MODEL CODES:

Model 37S 316SS Capsule and Socket, 304SS Case

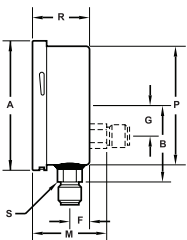
▶ AVAILABLE OPTIONS:

- Front Flange (back mount only)
- Back Flange
- U-Clamp

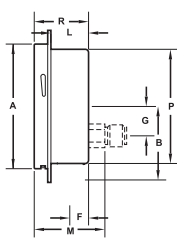
| Estimated Shipping Weight | |
|---------------------------|--------------|
| DIAL SIZE | DRY |
| 4" | 1 lb. 10 oz. |

▶ AVAILABLE CASE STYLES AND DIMENSIONS:

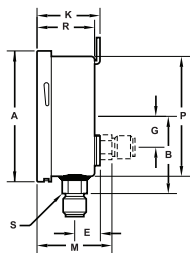
LOWER & BACK



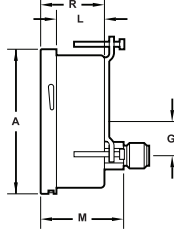
FRONT FLANGE



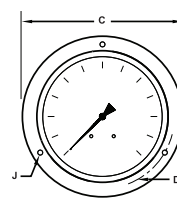
BACK FLANGE



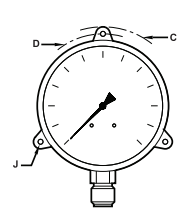
U-CLAMP



FRONT FLANGE
FRONT VIEW



BACK FLANGE
FRONT VIEW



| DIAL | A | B | C | D | E | F | G | J | K | L | M | P | R | S |
|------|--------------------|-----------------|------------------|------------------|-------------------|-----------------|-------------------|------------------|-------------------|-------------------|-------------------|-----------------|-------------------|----------------|
| 4" | 4.18" (106,2mm) | 2.68" (68mm) | 5.12" (130mm) | 4.65" (118mm) | 1.00" (25,4mm) | 0.91" (23mm) | 1.24" (31,5mm) | 0.22" (5,5mm) | 2.22" (56,4mm) | 1.55" (39,3mm) | 2.81" (71,5mm) | 3.86" (98mm) | 2.14" (54,5mm) | .87" (22mm) |



Tel-Tru Manufacturing Company
 408 St. Paul Street, Rochester, New York 14605 USA
 Phone: 585.232.1440 • 800.232.5335 • Fax: 585.232.3857 • E-mail: info@teltru.com • Web: www.teltru.com

► HOW TO ORDER:

To Build A Part Number: Select one code from each column to build your gauge.

| DIAL | MODEL CODE | TUBE & SOCKET | CASE | CONN. SIZE | CONN. LOCATION | CONN. TYPE | RANGE & SCALE | OPTIONS |
|------|--------------|------------------|----------------------------|------------------------------------|---|----------------|-----------------|---|
| 4" | 40 37 | S = 316SS | S = Stainless Steel | 2 = 1/2" 4 = 1/4" | L = Lower B = Lower Back | 1 = NPT | See Range Chart | E = Back Flange F = Front Flange* V = U-Clamp* |

*Available on Back Mount only

Example:

Specs: 4", Model 37, 316SS, 1/4" Lower, NPT, 0-30 IW, Back Flange

Select:

| | | | | | | | |
|-------|---|---|---|---|---|-----|---|
| 40 37 | S | S | 4 | L | 1 | C6P | E |
|-------|---|---|---|---|---|-----|---|

Ordering Format: 4037SS4L1C6PE

► STANDARD RANGES:

| CODE = RANGE | INTERVALS | DIVISIONS |
|------------------------|-----------|-----------|
| B1A = 0-5 psi | .5 | .05 |
| B4A = 0-10 psi | 1 | .1 |
| V1P = -30-0 IWV | 5 | .2 |
| B4P = 0-10 IW | 1 | .1 |
| B7P = 0-15 IW | 3 | .1 |
| C6P = 0-30 IW | 5 | .2 |
| D6P = 0-60 IW | 10 | .5 |
| D9P = 0-100 IW | 10 | 1 |
| E3P = 0-150 IW | 30 | 1 |

NOTE: OTHER RANGES AVAILABLE.