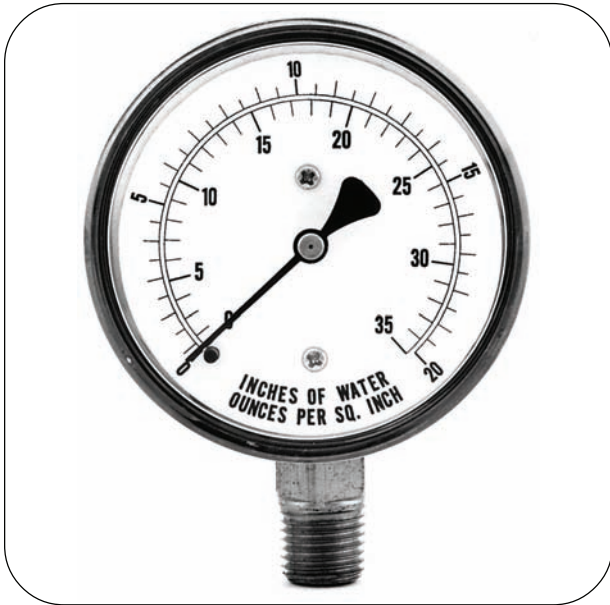


MODEL 55

LOW PRESSURE DIAPHRAGM-ACTUATED UTILITY PRESSURE GAUGES

Designed for use with air, gas, oil, water or any medium not corrosive to brass or bronze and where pressure of less than 10 psi is to be measured.



SPECIFICATIONS:

Dial Size:	2-1/2"
Accuracy:	±3-2-3% - ANSI Grade B
Case:	Black Painted Steel (dry only)
Socket:	Brass
Capsule:	Phosphor Bronze Diaphragm
Movement:	Brass
Lens:	Acrylic
Pointer:	Aluminum
Dial:	Aluminum
Connection:	1/4" NPT Lower or Center Back
Restrictor:	Standard
Zero Adjust:	Lower Mount Only
Range:	See Range Chart

Estimated Shipping Weight	
DIAL SIZE	DRY
2-1/2"	9 oz.

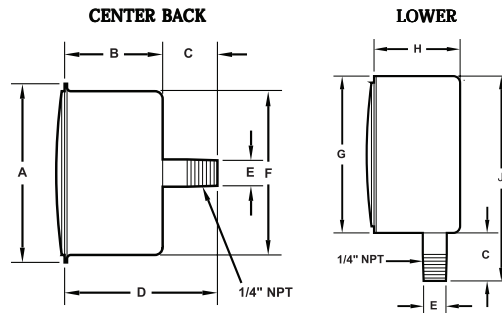
➤ AVAILABLE OPTIONS

- Oxygen Cleaning (dry)

➤ STANDARD RANGES:

CODE = RANGE	INTERVALS	DIVISIONS
B1A = 0-5 psi	1	.1
B4A = 0-10 psi	2	.2
B4P = 0-10 IW	2	.2
B7P = 0-15 IW	3	.2
C6P = 0-30 IW	5	.5
D6P = 0-60 IW	10	1
D9P = 0-100 IW	20	2
E3P = 0-150 IW	30	2
E5P = 0-200 IW	20	2
B7R = 0-15 IW/oz.	20	2
C8R = 0-35 IW/oz.	5	1
D6R = 0-60 IW/oz.	10	1
D9R = 0-100 IW/oz.	20	2

➤ AVAILABLE CASE STYLES AND DIMENSIONS:



DIAL	A	B	C	D	E	F	G	H	J
2-1/2"	2.85" (72,4mm)	1.60" (40,6mm)	.85" (21,6mm)	2.45" (62,2mm)	.55" (14mm)	2.60" (66mm)	2.60" (66mm)	1.70" (43,2mm)	3.45" (87,6mm)

➤ HOW TO ORDER:

To Build A Part Number: Select one code from each column to build your gauge.

DIAL	MODEL CODE	TUBE & SOCKET	CASE	CONN. SIZE	CONN. LOCATION	CONN. TYPE	RANGE & SCALE	OPTIONS
2-1/2"	25 55	B = Brass	C = Black Painted Steel	4 = 1/4"	L = Lower C = Center Back	1 = NPT	See Range Chart	Oxygen Cleaning *

Example: **Specs:** 2-1/2", Model 55B, Brass, Black Painted Steel, 1/4" Lower, NPT, 0-5 psi

Select:	25 55	B	C	4	L	1	B1A
----------------	-------	---	---	---	---	---	-----

Ordering Format: 2555BC4L1B1AC

* Oxygen cleaning is sold separately. Order part number 10000006.



Tel-Tru Manufacturing Company
 408 St. Paul Street, Rochester, New York 14605 USA
 Phone: 585.232.1440 • 800.232.5335 • Fax: 585.232.3857 • E-mail: info@teltru.com • Web: www.teltru.com

Steam Gauge Siphons

Protect your instruments from high temperatures.

The pigtail siphon is used to protect the pressure gauge from temperatures above 150°F. It allows the hot medium to cool before entering the pressure gauge. In most instances an isolation valve is located below the the pressure gauge and siphon to insure that the medium in the siphon stays cool.



SIZE	TYPE	MATERIAL	PART NO.
1/4" NPT	Sch. 40 Welded	Steel A53	21AS
1/4" NPT	Sch. 40 Seamless	Steel A106B	21SS
1/4" NPT	Sch. 40	304SS	214S
1/4" NPT	Sch. 40	316SS	216S
1/4" NPT	Sch. 80 Seamless	Steel A106	21SX
1/4" NPT	Sch. 80	304SS	214X
1/4" NPT	Sch. 80	316SS	216X

SIZE	TYPE	MATERIAL	PART NO.
1/2" NPT	Sch. 40	Steel A106B	51SS
1/2" NPT	Sch. 40	304SS	514S
1/2" NPT	Sch. 40	316SS	516S
1/2" NPT	Sch. 80 Seamless	Steel A106B	51SX
1/2" NPT	Sch. 80	304SS	514X
1/2" NPT	Sch. 80	316SS	516X

Schedule 40 up to 1200 PSI at 600°F depending on size and material.
 Schedule 80 up to 3000 PSI at 650°F depending on size and material.

Brass Gauge Cocks

Used in conjunction with siphon as an isolation valve.



TYPE	SIZE	PART NO.
Tee Handle	1/4"	GC38
Lever Handle	1/4"	GC44
Lever Handle	1/2"	GC45A

*** NOT recommended for pressure OVER 100 psi**

Mini Needle Valve



Mini Needle Valve

Model TBV4

- Rated up to 600 PSI @ 300°F
- Brass 1/4" NPT Female x 1/4" NPT Female