

SMARTONLINE T3 UPS SYSTEMS

RELIABLE OPERATION

SmartOnline T3 UPS Systems protect your equipment from power problems, including surges, line noise, harmonic distortion, electrical impulses, frequency variations, brownouts, overvoltages and blackouts. On-line operation continually transforms AC input power into filtered DC power, then resynthesizes it into precision-regulated AC output with a pure sine wave. Reliable backup power with zero transfer time to battery keeps equipment operating safely through shorter power failures and allows time to shut down or switch to generator power during longer outages. Fault-tolerant bypass features keep your equipment powered at all times—even if the UPS system requires maintenance, repair or replacement.

COMPACT FOOTPRINT

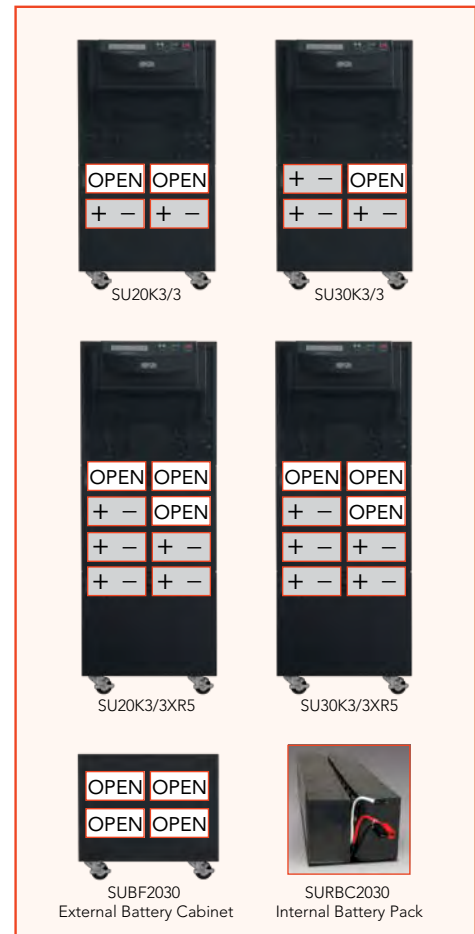
SmartOnline T3 UPS Systems have an all-in-one form factor that combines the power module and battery system. They pack enough power for multiple racks of equipment into a compact footprint that saves valuable data center floor space for critical systems and cooling. Wall-mounted distribution and bypass panels do not require additional floor space.

VERSATILE BATTERY SYSTEM

All SmartOnline T3 UPS Systems scale to fit your runtime requirements through an expandable, hot-swappable battery system with convenient front-panel access:

- Model SU20K3/3 includes 2 internal battery packs and has room to add 2 additional battery packs.*
- Model SU30K3/3 includes 3 internal battery packs and has room to add 1 additional battery pack.*
- Extended-runtime models (SU20K3/3XR5 and SU30K3/3XR5) each include 5 internal battery packs and have room to add 3 additional battery packs.*
- All models can also be connected to one or more compact external battery cabinets (SUBF2030). Each external battery cabinet holds up to 4 battery packs, sold separately.*
- Larger-capacity external battery cabinets with 10-year design life batteries are also available.

* Battery pack model SURBC2030.



SmartOnline T3 UPS Systems combine the power module and battery system in a single compact footprint. You can increase battery backup runtime by installing additional internal battery packs and/or external battery cabinets. External battery cabinets support daisy-chaining.

MONITORING AND CONTROL

Convenient communication and management features allow you to monitor power conditions, receive automatic alerts and control SmartOnline T3 UPS Systems from any distance.

- **COMMUNICATION PORTS**

RS-232, AS/400 and dry contact closure ports connect to servers for shutdown commands and reporting through PowerAlert software (included). An Emergency Power Off (EPO) jack connects to your facility's EPO circuit for emergency UPS system shutdown.

- **ACCESSORY CARD SLOT**

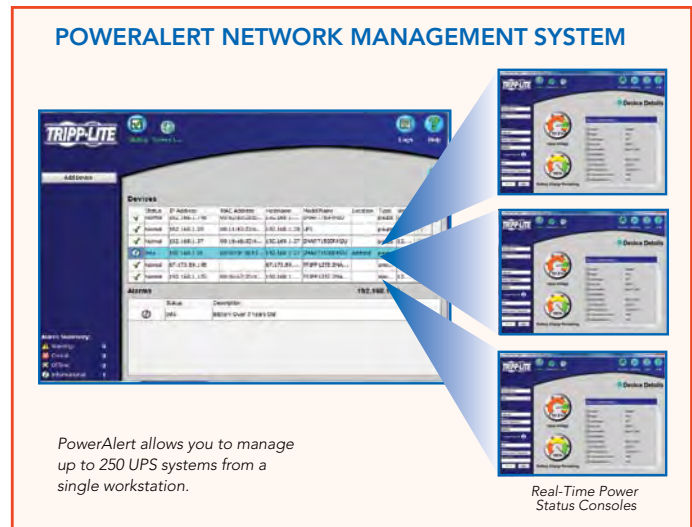
Optional network card (SNMPWEBCARD) provides remote monitoring and control. Optional dry contact closure accessory card (RELAYIOCARD) provides 6 outputs and 1 input.

- **NETWORK POWER MANAGEMENT**

Through PowerAlert software or SNMPWEBCARD, you can manage up to 250 UPS systems with PowerAlert Network Management System (included) or a third-party network management system.

- **LED/LCD CONTROL PANEL**

Offers convenient push button control and communicates operational modes, conditions and warnings.



PowerAlert allows you to manage up to 250 UPS systems from a single workstation.

Real-Time Power Status Consoles

SmartOnline T3 UPS Systems support remote management through PowerAlert software or the SNMPWEBCARD accessory.



The LCD/LED control panel indicates more than 45 separate faults, warnings and operational conditions.

ORDERING INFORMATION

MODEL	OUTPUT CAPACITY	BATTERY CONFIGURATION
SU20K3/3	20 kVA / 16 kW	Includes 2 internal battery packs; room for 2 additional SURBC2030 battery packs.
SU20K3/3XR5	20 kVA / 16 kW	Includes 5 internal battery packs; room for 3 additional SURBC2030 battery packs.
SU30K3/3	30 kVA / 24 kW	Includes 3 internal battery packs; room for 1 additional SURBC2030 battery pack.
SU30K3/3XR5	30 kVA / 24 kW	Includes 5 internal battery packs; room for 3 additional SURBC2030 battery packs.

BATTERY EXPANSION (Multiple battery cabinets can be daisy-chained.)

SURBC2030	240 VDC internal battery pack for SmartOnline T3 UPS Systems and SUBF2030 external battery cabinets.
SUBF2030	External battery cabinet. Requires SURBC2030 battery packs (up to 4 per cabinet), sold separately.
BP240V99	240 VDC external battery cabinet with 10-year design life batteries.
BP240V120	240 VDC external battery cabinet with 10-year design life batteries.
BP240V1207C	240 VDC external battery cabinet with 10-year design life batteries. Built-in battery charger.
BP240V150	240 VDC external battery cabinet with 10-year design life batteries.
BP240V1507C	240 VDC external battery cabinet with 10-year design life batteries. Built-in battery charger.

WALL-MOUNTED EXTERNAL MAINTENANCE BYPASS PANELS WITH KEYED SAFETY INTERLOCK SYSTEM

SU20KMBPK	Maintenance bypass panel for 20 kVA models. Keyed safety interlock system prevents sequence of operation errors.
SU30KMBPK	Maintenance bypass panel for 30 kVA models. Keyed safety interlock system prevents sequence of operation errors.

POWER MANAGEMENT ACCESSORIES

SNMPWEBCARD	Adds Ethernet network interface to UPS system for remote monitoring and control via SNMP, Web or telnet.
ENVIROSENSE	Monitors temperature and humidity. Monitors up to 3 additional sensors via dry contact closure interface. Requires SNMPWEBCARD.
RELAYIOCARD	Programmable dry contact closure accessory card with 6 output contacts and 1 input contact.

WARRANTIES AND SERVICES

Site survey services, start-up services, preventive maintenance services, extended warranties and on-site warranties are available. Visit www.tripplite.com or contact your Tripp Lite sales representative for more information.

TECHNICAL SPECIFICATIONS

	MODEL	SU20K3/3	SU20K3/3XR5	SU30K3/3	SU30K3/3XR5
INPUT	NOMINAL VOLTAGE	120/208 VAC (3Ø, 4-wire + ground, wye)			
	VOLTAGE RANGE	96~144/166~250 VAC			
	FREQUENCY (Auto-Selectable)	50/60 Hz ± 3 Hz			
	POWER FACTOR (On-line, Full Load)	> 0.95			
	NOMINAL CURRENT	53 A		79 A	
OUTPUT	CAPACITY (VA)	20,000 VA		30,000 VA	
	CAPACITY (Watts)	16,000 W		24,000 W	
	POWER FACTOR	0.8 Per Phase			
	NOMINAL VOLTAGE	120/208 VAC			
	FREQUENCY	50/60 Hz ± 0.1 Hz			
	NOMINAL CURRENT	56 A		83 A	
	WAVEFORM (On-line or Battery)	Pure Sine Wave			
	THD (Linear Load)	≤ 3%			
	VOLTAGE REGULATION (Static)	± 2%			
	OVERLOAD CAPACITY	≤ 125% for 60 seconds; ≤ 150% for 30 seconds; > 150% for 2 seconds			
GENERAL	MAIN INPUT PROTECTION	200 A / 150 VAC Fuse x 3			
	STANDARD INTERFACE	LED/LCD Control Panel, RS-232, AS/400, Dry Contact Closure, EPO (Local and Remote)			
	OPTIONAL INTERFACE	SNMPWEBCARD, ENVIROSENSE, RELAYIOCARD			
	UPS TOPOLOGY	On-line, Double Conversion			
	AGENCY APPROVALS	UL 1778, cUL, FCC Class A, NOM			
	EFFICIENCY	Up to 93%			
	TYPICAL RUNTIME* (Half/Full Load)	13/5+ min (Internal Batteries)	42/17+ min (Internal Batteries)	13/5+ min (Internal Batteries)	25/11+ min (Internal Batteries)
	INCLUDED INTERNAL BATTERY PACKS	2	5	3	5
	INTERNAL BATTERY PACK CAPACITY**	4 (Can Add 2)	8 (Can Add 3)	4 (Can Add 1)	8 (Can Add 3)
	TRANSFER TIME	0 ms			
	AMBIENT OPERATING TEMPERATURE	32° F to 104° F (0° C to 40° C)			
	ELEVATION	0 to 10,000 ft (0 to 3,000 m)			
	HUMIDITY (Non-Condensing)	≤ 95%			
	NOISE (1 m)	< 65 dBA			
	UNIT HEIGHT	35.9 in (912 mm)	50.9 in (1,293 mm)	35.9 in (912 mm)	50.9 in (1,293 mm)
	UNIT WIDTH	25.4 in (645 mm)	25.4 in (645 mm)	25.4 in (645 mm)	25.4 in (645 mm)
	UNIT DEPTH	36.8 in (935 mm)	36.8 in (935 mm)	36.8 in (935 mm)	36.8 in (935 mm)
	UNIT WEIGHT (Standard Configuration)	519 lb (236 kg)	979 lb (444 kg)	660 lb (299 kg)	999 lb (453 kg)
	SHIPPING WEIGHT (Standard Configuration)	607 lb (275 kg)	1,133 lb (514 kg)	748 lb (339 kg)	1,153 lb (523 kg)

* Runtime shown for standard internal battery configuration. Runtime varies with load, battery condition and other factors. Runtime can be extended by adding internal battery packs and/or external battery cabinets, sold separately. ** Add internal battery pack model SURBC2030, sold separately.

