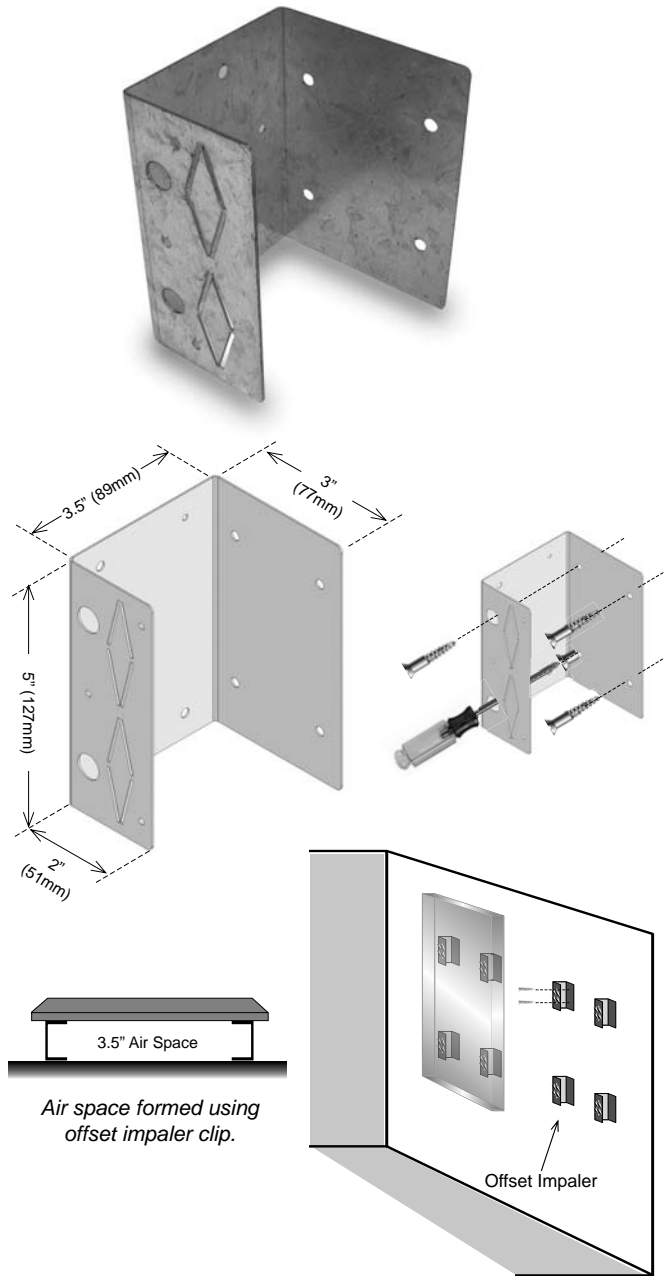


OFFSET IMPALER™

Offset impalers provide the installer with a simple, quick and effective method of mounting Broadway™ fiberglass acoustic panels onto wall surfaces while creating an air cavity behind the panel to increase bass absorption.

The Offset impaler features a U-shaped design that holds the panel from the wall surface by 3.5" making it easy to align with typical 2" x 4" studs. The panel is held in place using a series of sharp protruding darts that penetrate the panel to secure it during installation.

To ensure panels do not get dislodged after installation, applying a dab of construction adhesive to the impaler darts during the mounting process adds a level of security and reduces opportunity for tampering. Impalers are installed using typical sheetrock anchors and screws and therefore, will not cause serious surface defacement to the wall.



SPECIFICATIONS:

MATERIAL	20 gauge galvanized steel
DIMENSIONS	3" (76mm) x 5" (127mm): Offset = 3.5" (89mm) from wall surface
ATTACHMENT POINTS	4 (Use an appropriate fastener for wall surface)
MAX LOAD LIMIT	12 lbs. (5.4 kg.) Dependant on wall fastener
NUMBER PER BOX	8 per box
ORDER NUMBER	F101-1035-00



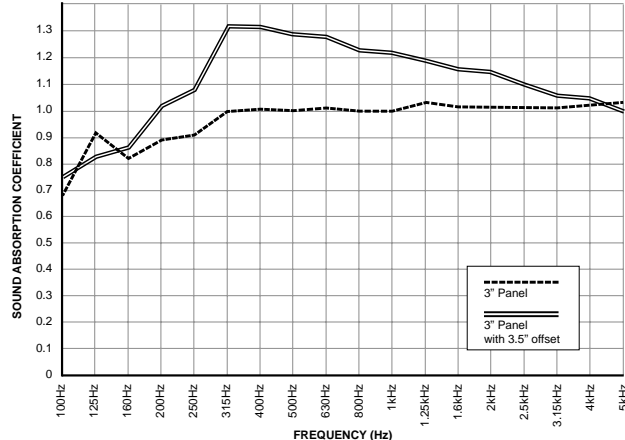
ABSORPTION CHARACTERISTICS:**

Sound absorption coefficient data

PANEL DEPTH	125Hz	250Hz	500Hz	1kHz	2kHz	4kHz	NRC
3" panel	0.92	0.91	1.00	1.00	1.02	1.03	1.00
With 3.5" Offset***	0.83	1.08	1.29	1.22	1.15	1.05	1.20
2" Depth*	0.45	0.83	1.07	1.00	1.01	1.00	1.00
With 3.5" Offset***	0.51	1.00	1.32	1.22	1.16	1.09	1.10

** Testing performed by Riverbank Acoustical Laboratories. The test method conformed explicitly with the requirements of the ASTM Standard Test Method for Sound Absorption and Sound Absorption Coefficients by the Reverberation Room Method: ASTM C 423-02a and E795-05.
 ***Offset mounted to create an air space between the panel and wall.

Three inch Broadway panels with and without a 3.5" air space.



Two inch Broadway panels with and without a 3.5" air space.

