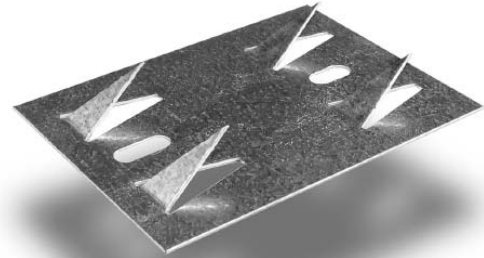


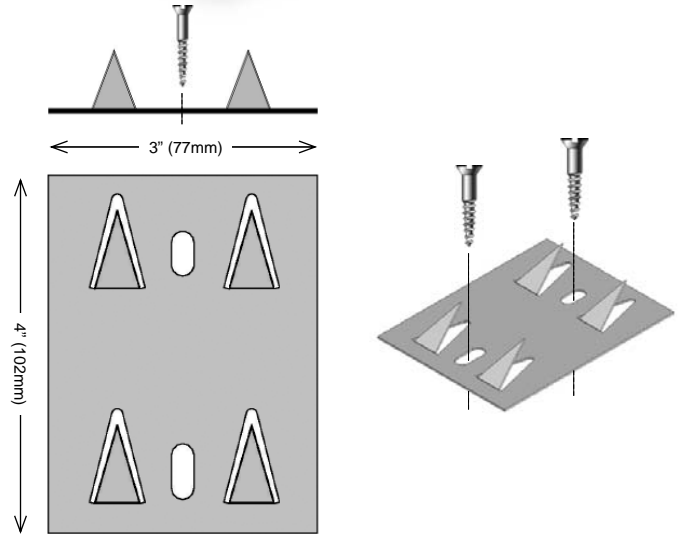
SURFACE IMPALER™

Primacoustic surface mount impalers are designed to provide the installer with a simple, quick and effective method of mounting Broadway™ fiberglass acoustic panels onto walls without causing serious surface defacement. The surface mount impaler features a series of sharp protruding darts that penetrate the panel to secure it in place during installation. To ensure panels do not get dislodged after installation, applying a dab of construction adhesive to the impaler darts during the mounting process adds a level of security and reduces opportunity for tampering. Impalers are installed using typical sheetrock anchors and screws.



SPECIFICATIONS:

Material	20 gauge galvanized steel
Dimensions	3" (76mm) x 4" (102mm)
Attachment Points	2 (Use an appropriate fastener for wall surface)
Max Load Limit	12 lbs. (5.4 kg.) Dependent on wall fastener
Number per box	16 per box
Order Number	F101-1000-00



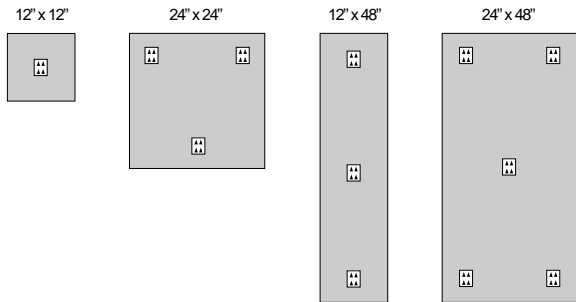
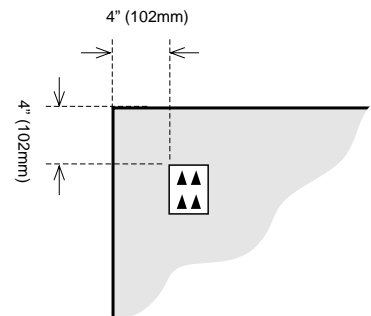
RECOMMENDED MINIMUM NUMBER OF IMPALERS PER PANEL:

Order No.	Description	HEIGHT	WIDTH	DEPTH	No. of Impalers Needed*
F101-1212-xx	Scatter Blocks	12" (305mm)	12" (305mm)	1" (25mm)	1
F102-1212-xx	Scatter Blocks	12" (305mm)	12" (305mm)	2" (51mm)	1
F101-2424-xx	Control Cubes	24" (610mm)	24" (610mm)	1" (25mm)	3
F102-2424-xx	Control Cubes	24" (610mm)	24" (610mm)	2" (51mm)	3
F122-2424-xx	Control Cubes	24" (610mm)	24" (610mm)	2" (51mm)	3
F101-1248-xx	Control Columns	12" (305mm)	48" (1219mm)	1" (25mm)	2
F102-1248-xx	Control Columns	12" (305mm)	48" (1219mm)	2" (51mm)	3
F122-1248-xx	Control Columns	12" (305mm)	48" (1219mm)	2" (51mm)	3
F103-1248-xx	Control Columns	12" (305mm)	48" (1219mm)	3" (76mm)	3
F101-2448-xx	Broadband Panels	24" (610mm)	48" (1219mm)	1" (25mm)	4
F102-2448-xx	Broadband Panels	24" (610mm)	48" (1219mm)	2" (51mm)	4
F122-2448-xx	Broadband Panels	24" (610mm)	48" (1219mm)	2" (51mm)	4
F103-2448-xx	Broadband Panels	24" (610mm)	48" (1219mm)	3" (76mm)	5
F123-2448-xx	Broadband Panels	24" (610mm)	48" (1219mm)	3" (76mm)	5

*Primacoustic recommends a certain number of impalers per panel as the minimum required for safe installation based on panel depth and weight. For additional security, you may wish to increase these numbers per panel and also combine with construction adhesive.

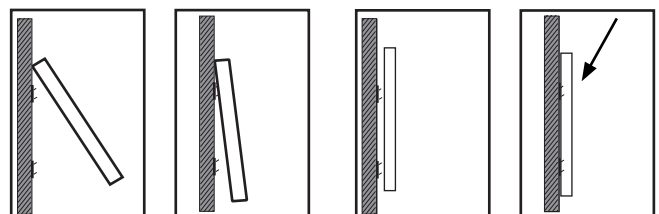
IMPALER LOCATION ON PANEL:

Flush mount impaler clips should be located approximately 4 inches (102mm) or more from the panel edges.



WALL MOUNTING:

Place top edge on set line. Carefully swing bottom edge to meet impaler heads. With the panel resting on the impaler darts, apply in towards wall and downward pressure.

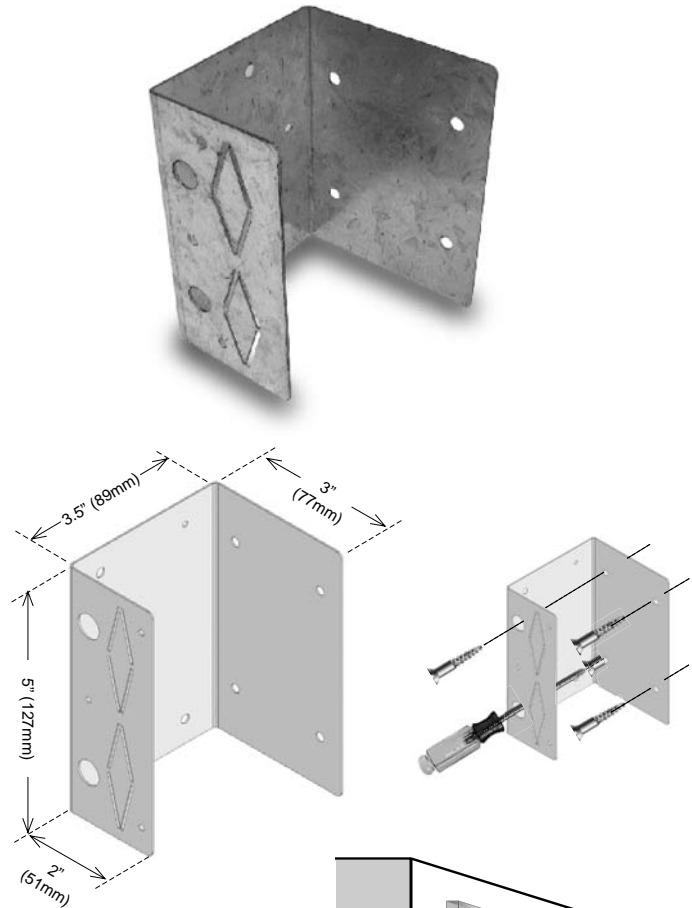


OFFSET IMPALER™

Primacoustic Offset impalers provide the installer with a simple, quick and effective method of mounting Broadway™ fiberglass acoustic panels onto wall surfaces while creating an air cavity behind the panel to increase bass absorption. The Offset impaler features a U-shaped design that elevates the panel from the wall surface by 3.5" making it easy to align with typical 2" x 4" studs. The panel is held in place using a series of sharp protruding darts that penetrate the panel to secure it during installation. To ensure panels do not get dislodged after installation, applying a dab of construction adhesive to the impaler darts during the mounting process adds a level of security and reduces opportunity for tampering. Impalers are installed using typical sheetrock anchors and screws and therefore, will not cause serious surface defacement to the wall.

SPECIFICATIONS:

Material	20 gauge galvanized steel
Dimensions	3" (76mm) x 5" (127mm); Offset = 3.5" (89mm) from wall surface
Attachment Points	4 (Use an appropriate fastener for wall surface)
Max Load Limit	12 lbs. (5.4 kg.) Dependant on wall fastener
Number per box	8 per box
Order Number	F101-1035-00



ABSORPTION CHARACTERISTICS:**

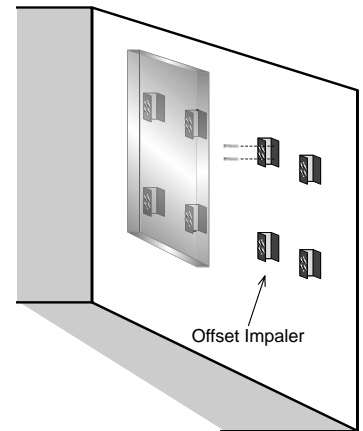
Sound absorption data (NRC values) ASTM C423-90a.

Panel Depth	125Hz	250Hz	500Hz	1kHz	2kHz	4kHz	NRC
3" Panel	0.92	0.91	1.00	1.00	1.02	1.03	1.00
With 3.5" offset***	0.83	1.08	1.29	1.22	1.15	1.05	1.20
2" Depth	0.45	0.83	1.07	1.00	1.01	1.00	1.00
with 3.5" Offset***	0.51	1.00	1.32	1.22	1.16	1.09	1.10

** Testing performed by Riverbank Acoustical Laboratories. The test method conformed explicitly with the requirements of the ASTM Standard Test Method for Sound Absorption and Sound Absorption Coefficients by the Reverberation Room Method: ASTM C 423-02a and E795-05. ***Offset mounted to create an air space between the panel and wall.

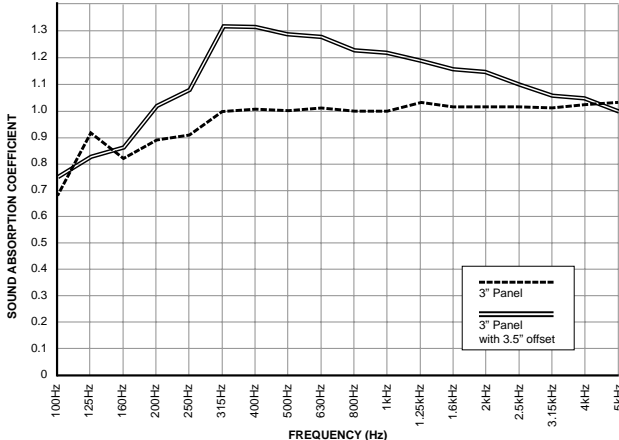


Air space formed using offset impaler clip.

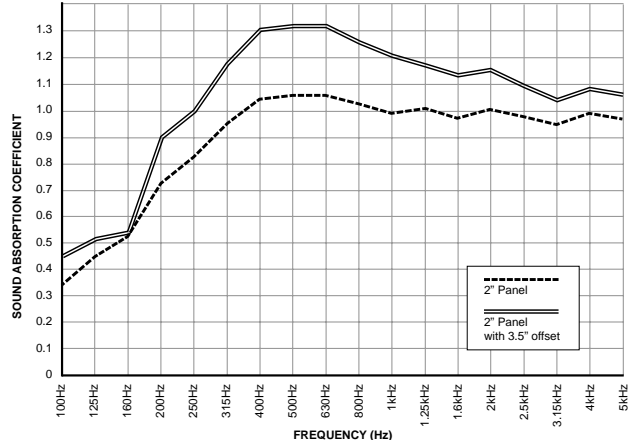


Offset Impaler

Three inch Broadway panels with and without a 3.5" air space.



Two inch Broadway panels with and without a 3.5" air space.



CORNER IMPALER™

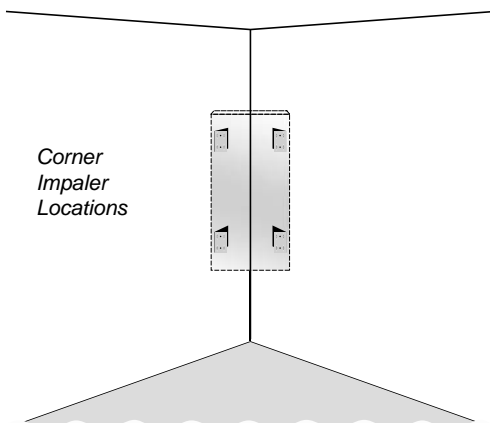
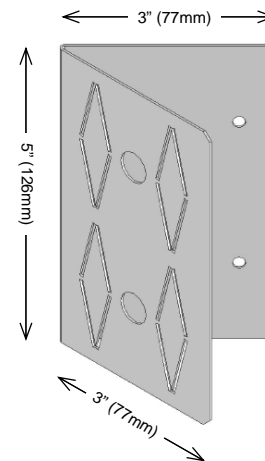
Primacoustic Corner impalers are designed to provide the installer with a simple, quick and effective method of mounting Broadway™ fiberglass acoustic panels into corners to create a bass trap. The Corner impaler features a 45° angle design that positions a panel across a typical 90° corner without causing serious defacement of the wall surface. The panel is held in place using a series of sharp protruding darts that penetrate the panel to secure it during installation. To ensure panels do not get dislodged after installation, a dab of construction adhesive may be applied to the impaler darts during the mounting process adding a higher level of security and reducing opportunity for tampering. Impalers are installed using typical sheetrock anchors and screws.

SPECIFICATIONS:

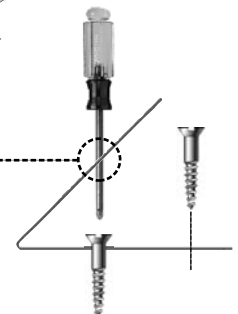
Material	20 gauge galvanized steel
Dimensions	3" (76mm) x 5" (127mm); 45° angle for 90° corners.
Attachment Points	4 x (Use appropriate fastener for wall surface)
Max Load Limit	12 lbs. (5.4 kg.) Dependant on wall fastener
Number per box	8 pieces
Order Number	F101-1001-00

RECOMMENDED NUMBER OF IMPALERS PER PANEL:

Order No.	Description	HEIGHT	WIDTH	DEPTH	No. of Impalers Needed
F102-2448-	Broadband Panels	24" (610mm)	48" (1219mm)	2" (51mm)	4
F122-2448-	Broadband Panels	24" (610mm)	48" (1219mm)	2" (51mm)	4
F103-2448-	Broadband Panels	24" (610mm)	48" (1219mm)	3" (76mm)	4
F123-2448-	Broadband Panels	24" (610mm)	48" (1219mm)	3" (76mm)	4

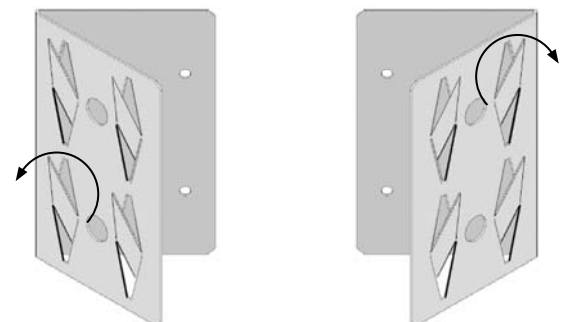


Access hole for screw driver to pass through.



PREPARING IMPALER HEADS:

Impaler darts are bi-directional and are pivoted outward as needed to create left and right Corner impalers.



MOUNTING:

- 24" (610mm) wide Broadway panel, space impaler clip 17" (432mm) from corner.

