

# MODEL 52



## MECHANICAL CONTRACTOR PRESSURE GAUGES

*A utility gauge used with any liquid or gas not corrosive to bronze. Typically used for HVAC applications.*



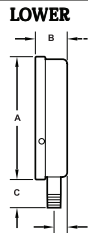
### SPECIFICATIONS:

Dial Size:	4-1/2"
Accuracy:	±1% FS - ANSI Grade A
Case:	Stainless Steel (dry only)
Socket:	Brass
Bourdon Tube:	Phosphor Bronze
Movement:	Phosphor Bronze
Lens:	Acrylic
Pointer:	Aluminum, Adjustable
Dial:	Heavy Gage Aluminum
Connection:	1/4" NPT Lower Only
Restrictor:	Standard
Range:	See Range Chart
Scales:	psi

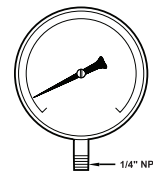
Estimated Shipping Weight	
DIAL SIZE	DRY
4-1/2"	13 oz.

### ► AVAILABLE CASE STYLES AND DIMENSIONS:

DIAL	A	B	C	D
4-1/2"	4.94" (125,4mm)	1.19" (30,2mm)	1.06" (26,9mm)	0.44" (11,2mm)



FRONT VIEW



### ► HOW TO ORDER:

To Build A Part Number: Select one code from each column to build your gauge.

DIAL	MODEL CODE	TUBE & SOCKET	CASE	CONN. SIZE	CONN. LOCATION	CONN. TYPE	RANGE & SCALE
4-1/2"	<b>45 52</b>	<b>B = Brass</b>	<b>S = Stainless Steel</b>	<b>4 = 1/4"</b>	<b>L = Lower</b>	<b>1 = NPT</b>	See Range Chart

Example:

**Specs:** 4-1/2", Model 52B, Brass, Stainless Steel, 1/4" Lower NPT, 0-30 psi

<b>Select:</b>	45 52	B	S	4	L	1	C6A
----------------	-------	---	---	---	---	---	-----

**Ordering Format:** 4552BS4L1C6A

### ► STANDARD RANGES:

CODE = RANGE (psi)	INTERVALS (psi)	DIVISIONS (psi)
Z2A = 30-0-30	5	1
Z3A = 30-0-60	10	2
B7A = 0-15	1	.25
C6A = 0-30	5	.5
D6A = 0-60	10	1
D9A = 0-100	20	2
E4A = 0-160	20	2
E5A = 0-200	20	2
E8A = 0-300	50	5
F2A = 0-400	50	5
F4A = 0-600	100	10