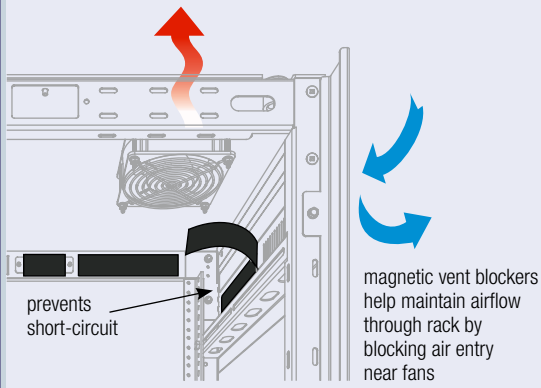


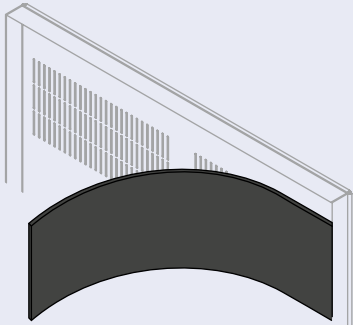


# Vent Blockers and Rear Door Kits

Vent Blockers and Rear Door Kits



**Vent Blockers** mount to the inside of enclosures to block airflow



## Vent Blockers

Vent blockers are used to prevent the recirculation of hot air between top-mount fans and nearby vent openings. Vent blockers should be placed over the enclosure's vents located on the upper front of the enclosure, upper sides, and upper rear door (depending on enclosure).

This will ensure that heated enclosure air will be forced out through the top-mounted exhaust fans instead of re-circulating, keeping equipment cool.

Part #	Used On
VBK-W27-W32	WRK-xx27 & WRK-xx-32
VBK-WSA27	WRK-xxSA-27
VBK-WSA32	WRK-xxSA-32, WR-xx-32*
VBK-E20	ERK-xx20, DWR-xx-26
VBK-E25	ERK-xx25
VBK-SCRK27	SCRK Series
VBK-D17	DWR-xx-17
VBK-SD-22	SR-40-22, DWR-xx-22
VBK-S28	SR-xx-28

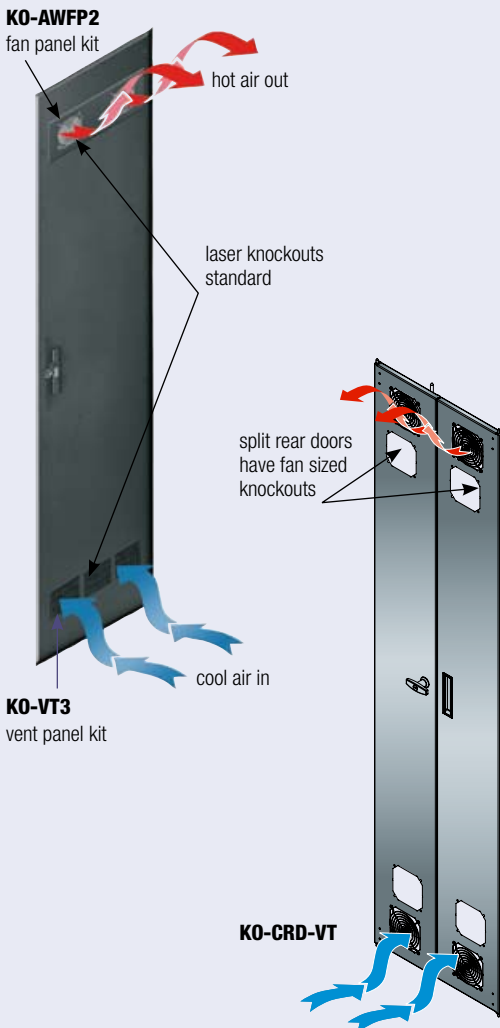
Part #	Used On
VBK-S32	SR-xx-32, DWR-xx-32
VBK-S42	WR-xx-42*
VBK-V	VRK-44-31H/VRK-44-36H
VBK-DRK	DRK Series
VBK-PTRK	PTRK-xx
VBK-PTRK26	PTRK-xx26
VBK-BGR	BGR Series
VBK-BGR-SA	BGR-SA Series

\*When WR is not flush against a wall, block the rear opening with the optional rear access panel, model # WR-RAP-xx

BGR and EGR options are shown on rack series pgs.

## Thermal Management Kits for Rear Door

Middle Atlantic Products standard solid rear doors on WRK, MRK and ERK Series (pg. 35) enclosures are configurable for achieving optimal active or passive thermal management. Fan, vent and filter kits are available to install after laser knockouts are removed from door. Fan and vent kits now available for solid split rear doors.



**KO-AWFP2**



**KO-VT3**



**KO-FILTER3**

Fits WRK, MRK, ERK Standard Solid Rear Doors	
Part #	Description
KO-AWFP2	fan kit with two fans, 190 CFM
KO-VT3	vent panel kit
KO-FILTER3	filter kit
KO-WSB3	blank panel kit

Fits Solid Split Rear Doors	
Part #	Description
KO-CRD-FAN	fan kit with two fans, 190 CFM and two vents
KO-CRD-VT	filter kit



# High CFM Rear Doors

**Removes hot air from densely populated server enclosures.**  
**Great solution when top mounted fans are not enough to move the required CFM.**

Spec. #  
**96-01093**  
 for full  
 product  
 info.



## Structural Features

- Ideal for hot aisle/cold aisle applications where air return is above hot aisle, because exhaust air is directed upward toward air returns
- Excellent when enclosure is highly populated with NVR's/DVR's or servers that are front intake/rear exhaust-type
- Finished in a durable black textured powder coat

## Thermal Management

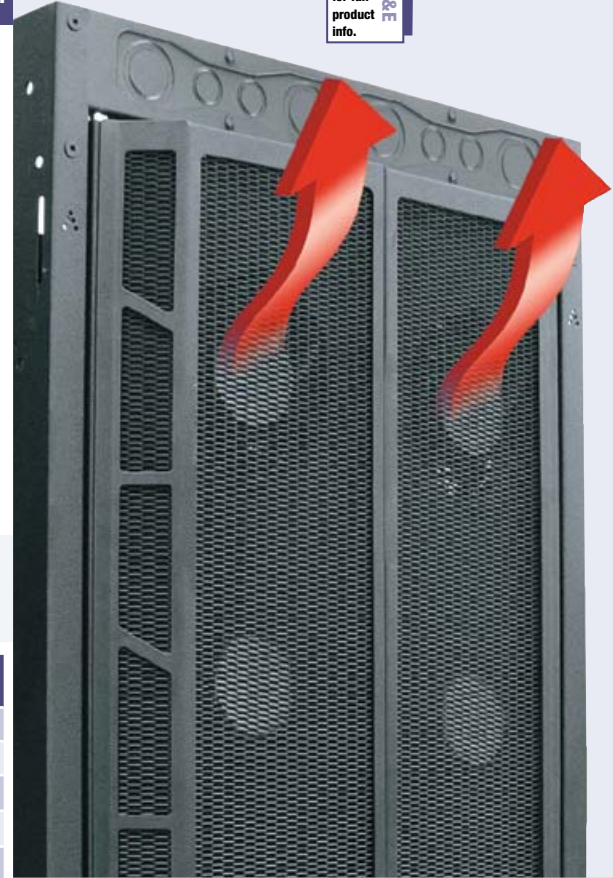
- Pre-configured with six 6" fans. These fans have adjustable locations and can be arranged where they are most needed
- Additional fans can be added to increase total CFM. Doors can accept up to 16 total fans to boost total air movement up to 3,520 CFM for maximum cooling
- A high-capacity thermostatic fan controller is available – see bottom of this page

## Cable Management

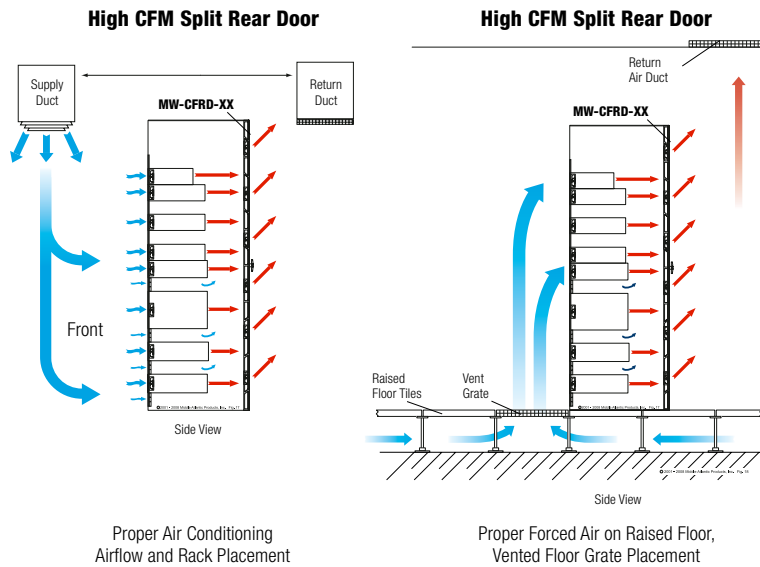
- Each door has a removable 48" SignalSafe™ IEC cord to allow for doors to be plugged into separate circuits. Shorter IEC cords can be substituted for improved cable management. For more on SignalSafe technology, see pg. 116

## Regulatory / Certifications

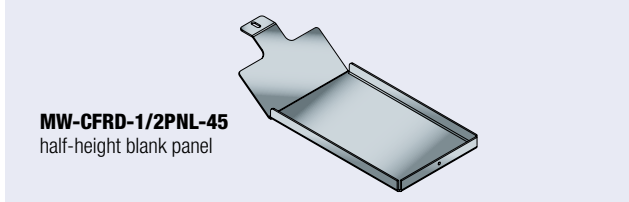
- GREENGUARD Indoor Air Quality Certified for Children and Schools (the most strict level)
- UL Listed in the US and Canada



Part #	Description	Fits	Additional 1/2 Blank Panels (Qty. of 4)	Free Air CFM
MW-CFRD-45	45 space split fan rear door	WMRK	MW-CFRD-1/2PNL-45	1,320
MW-CFRD-44	44 space split fan rear door	MRK, WRK, VRK	MW-CFRD-1/2PNL-44	1,320
MW-CFRD-42	42 space split fan rear door	WMRK	MW-CFRD-1/2PNL-42	1,320
D-CFRD-44	44 space split fan rear door	DRK	DCFRD-1/2PNL-44	1,320
MWCFRD-FKIT	additional 6" fan for MW-CFRD and D-CFRD			220
FC-CFRD	fan controller, 1 rackspace			



**adjustable fan panels (8 per half door)**      **shorter IEC cords can be used to simplify cable management**



## Heavy-Duty Fan Thermostatic Controller for High CFM Rear Doors

- One unit can power up to 16 fans in a fully populated system
- One rackspace; mounts at top or bottom with flexible mounting ears
- Setting for thermostatic temperature control
- Setting for proportional or snap action
- ETL Listed in the US and Canada

**Part #**  
 FC-CFRD



High CFM Rear Doors