



# WMRK Series Server Enclosures



EIA/TIA Compliant



Spec. # 96-01079 for full product info.



## WMRK = Wide Multi-Bay

The WMRK was designed specifically for mounting deep equipment in a raised-floor standard 24" wide enclosure. Comes standard with cage nut mounting rails.

Choose a WMRK when mounting deep servers or similar equipment is required, and for easy installations in raised-floor environments. Configured models are also available – see pg. 49 for details.



### Structural Features

- Fully welded construction for strength and stability
- 24" overall width optimized for use on raised floors
- Numbered rackspace increments speed equipment mounting
- Designed to allow fully integrated racks to be ganged
- Includes two pair of adjustable cage nut rackrail and one pair of z-rail sidemount adaptors configured to accept servers and slide kits from all leading manufacturers
- Includes leveling feet and 100 qty of 6mm cage nuts and hardware
- Finished in a durable black textured powder coat

### Thermal Management

- Includes perforated front and rear doors to meet most server manufacturer warranty specifications (for configured versions only)

### Cable Management

- 42 space model includes a pre-mounted vertical lacing strip

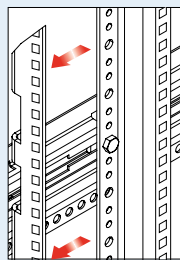
### Regulatory / Certifications

- Static load capacity - 10,000 lbs.
- UL Listed in the US and Canada. UL Listed load capacity - 2,500 lbs.
- Seismic certified to the following codes and standards: 2007 & 2010 CBC; 2006, 2009 & 2012 IBC; ASCE 7-05 (2005 Edition) & ASCE 7-10 (2010 Edition) and the 2006 & 2009 editions of NFPA 5000 for use in areas of high seismicity – Zone 4 or Seismic Design Category (SDC) "D". These are designed for Mission Critical and/or High-Importance Installations in locations with the highest level of seismicity and top floor or rooftop installations including those within UBC and CBC Essential facilities or IBC, ASCE 7, and NFPA 5000 Seismic Use Group III facilities. For all codes, the Importance factor (I<sub>p</sub>) is 1.5. Seismic Certified load capacity of 1,090 lbs. when used with WMRK-Z4 seismic floor anchor brackets.
- GREENGUARD Indoor Air Quality Certified for Children and Schools (the most strict level)

WMRK Series Server Enclosures

**WMRK-4236**  
shown with optional front/rear doors

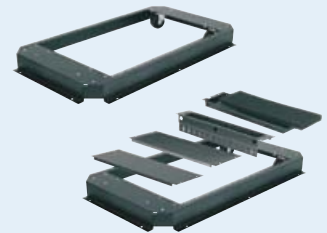
**PROWMRK-ZRA-xx**  
Z-rail adaptor converts standard rackrail to "Z" rail, for side mount applications



### Caster and Plenum Bases

Optional caster base allows the rack to be wheeled into place, then raised via leveling feet. Caster base includes one 4 space and one 2 space blank panel. Optional Plenum Base accepts a variety of 19" panels for cable and thermal management including filters, brush grommets, vent panels, & blank panels.

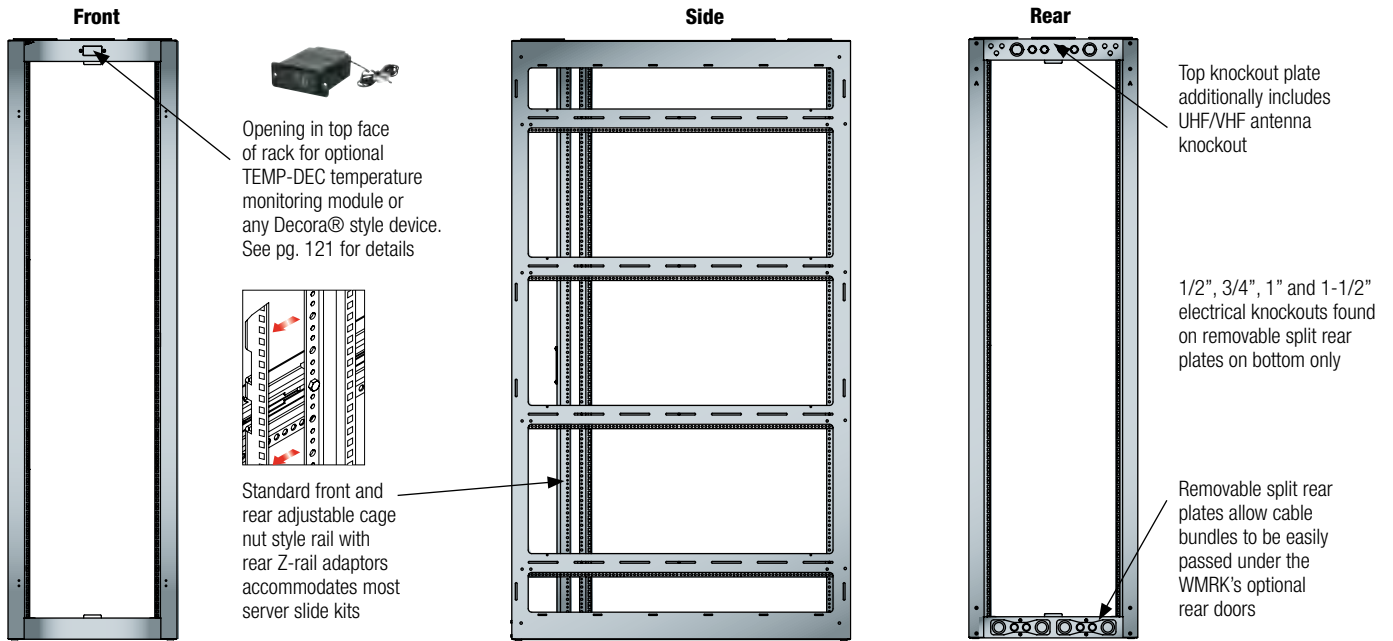
- 36" deep = 10 rackspace
- 42" deep = 14 rackspace
- 48" deep = 18 rackspace



Part #	Racking Height	Overall Height	Useable Depth	Overall Depth	Overall Width	Lockable Side Panels	UL LISTED Caster Base	Plenum Base	Add'l Cage Nut Rackrail	Add'l Z-rail Adaptor	Recommended Power*
WMRK-2436	42" (24 space)	48-5/16"	33-1/2"	36"	24"	SPN-24-36	CBS-WMRK-36	PBS-WMRK-36	PROWMRK-RR24	PROWMRK-ZRA-24	E G
WMRK-2442	42" (24 space)	48-5/16"	39-1/2"	42"	24"	SPN-24-42	CBS-WMRK-42	PBS-WMRK-42	PROWMRK-RR24	PROWMRK-ZRA-24	E G
WMRK-4236	73-1/2" (42 space)	79-13/16"	33-1/2"	36"	24"	SPN-42-36	CBS-WMRK-36	PBS-WMRK-36	PROWMRK-RR42	PROWMRK-ZRA-42	E G N P R T
WMRK-4242	73-1/2" (42 space)	79-13/16"	39-1/2"	42"	24"	SPN-42-42	CBS-WMRK-42	PBS-WMRK-42	PROWMRK-RR42	PROWMRK-ZRA-42	E G N P R T
WMRK-4248	73-1/2" (42 space)	79-13/16"	45-1/2"	48"	24"	SPN-42-48	CBS-WMRK-48	PBS-WMRK-48	PROWMRK-RR42	PROWMRK-ZRA-42	E G N P R T
WMRK-4536	78-3/4" (45 space)	85-1/16"	33-1/2"	36"	24"	SPN-45-36	CBS-WMRK-36	PBS-WMRK-36	PROWMRK-RR45	PROWMRK-ZRA-45	E G N P R T
WMRK-4542	78-3/4" (45 space)	85-1/16"	39-1/2"	42"	24"	SPN-45-42	CBS-WMRK-42	PBS-WMRK-42	PROWMRK-RR45	PROWMRK-ZRA-45	E G N P R T
WMRK-4548	78-3/4" (45 space)	85-1/16"	45-1/2"	48"	24"	SPN-45-48	CBS-WMRK-48	PBS-WMRK-48	PROWMRK-RR45	PROWMRK-ZRA-45	E G N P R T

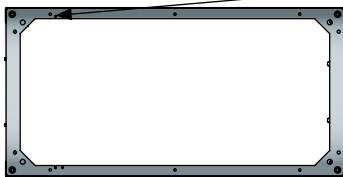
\*for more info refer to pgs. 96-117





### Base of Rack

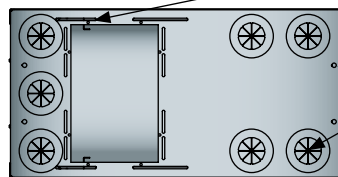
Stud in the base of rack facilitates proper grounding and bonding of electronic equipment, as per NEBS and NEC standards.



See pg. 117 for grounding and bonding options

### Top

Rack top includes integral mounting points for 6", 9", 12" and 18" wide cable ladders



Rack top includes 5/8" LKOs

Rack top includes five integral gland grommeted 4" cable pass-throughs (48" depth includes seven)

### Complete your Rack System with the following options and accessories:



**Power Distribution**  
pgs. 96-117



**Thermal Management**  
pgs. 118-129



**Cable Management**  
pgs. 130-143



**Rack Accessories**  
pgs. 144-169

**Rack Options:** The options listed below are the most widely used accessories for this series of enclosure but is not inclusive of all available items. For additional options and/or more information on the items listed below reference the Enclosure Options section of the catalog.

Part #	Front Doors			Rear Doors*		64% Open Area Perf Top	Solid Top	Vented Top	Fan Tops		
	Solid	Plexi	70% Open Area Perf	Solid Split	79% Open Area Perf Split				w/ (3) 4-1/2" Fans (285 CFM Total)	w/ (2) 6" Fans (440 CFM Total)	w/ (1) 10" Fan (550 CFM Total)
WMRK-2436	FD-24	PFD-24	LVFD-WMRK-24	MW-CRD-24	MW-CLVRD-24	ERK-LVT	ERK-ST	ERK-VT	ERK-4FT-285CFM	ERK-6FT-440CFM	ERK-10FT-550CFM
WMRK-2442	FD-24	PFD-24	LVFD-WMRK-24	MW-CRD-24	MW-CLVRD-24	ERK-LVT	ERK-ST	ERK-VT	ERK-4FT-285CFM	ERK-6FT-440CFM	ERK-10FT-550CFM
WMRK-4236	FD-42	PFD-42	LVFD-WMRK-42	MW-CRD-42	MW-CLVRD-42	ERK-LVT	ERK-ST	ERK-VT	ERK-4FT-285CFM	ERK-6FT-440CFM	ERK-10FT-550CFM
WMRK-4242	FD-42	PFD-42	LVFD-WMRK-42	MW-CRD-42	MW-CLVRD-42	ERK-LVT	ERK-ST	ERK-VT	ERK-4FT-285CFM	ERK-6FT-440CFM	ERK-10FT-550CFM
WMRK-4248	FD-42	PFD-42	LVFD-WMRK-42	MW-CRD-42	MW-CLVRD-42	ERK-LVT	ERK-ST	ERK-VT	ERK-4FT-285CFM	ERK-6FT-440CFM	ERK-10FT-550CFM
WMRK-4536	FD-45	PFD-45	LVFD-WMRK-45	MW-CRD-45	MW-CLVRD-45	ERK-LVT	ERK-ST	ERK-VT	ERK-4FT-285CFM	ERK-6FT-440CFM	ERK-10FT-550CFM
WMRK-4542	FD-45	PFD-45	LVFD-WMRK-45	MW-CRD-45	MW-CLVRD-45	ERK-LVT	ERK-ST	ERK-VT	ERK-4FT-285CFM	ERK-6FT-440CFM	ERK-10FT-550CFM
WMRK-4548	FD-45	PFD-45	LVFD-WMRK-45	MW-CRD-45	MW-CLVRD-45	ERK-LVT	ERK-ST	ERK-VT	ERK-4FT-285CFM	ERK-6FT-440CFM	ERK-10FT-550CFM

\*High CFM Rear Door available, see pg. 36

