



Model BFAV550-CH1 shown with SANUS Foundations Furniture Mount System model FMS01-B1

SANUS Basic Series Furniture

NEW

MODEL

BFV348

Three-shelf antiqued AV stand

DIMENSIONS (w x d x h)

47.8" x 22.9" x 31.5"
121.4 x 58.2 x 80 cm

FINISH

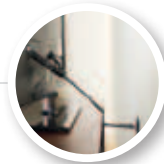
Antique Black - BFV348-AB1



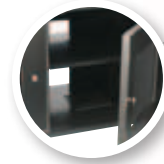
Removable back panel provides quick and easy access to components



FMS Compatible



ELM701 Compatible



Adjustable shelf accommodates equipment of varying height



Quick and easy assembly without the need for tools



Vented shelf maximizes airflow to equipment



WEIGHT CAPACITY

Top Shelf – 130 lbs. / 59 kg

Mid Shelves – 50 lbs. / 22 kg

Bottom Shelf – 75 lbs. / 34 kg

NEW

MODEL

BFV157

Three-shelf AV stand with storage

DIMENSIONS (w x d x h)

57.1" x 19.7" x 23"
145 x 50 x 58.6 cm

FINISH

Coffee - BFV157-C01



Quick and easy assembly without the need for tools



FMS Compatible



ELM701 Compatible



Media storage box helps keep remotes and other accessories organized



Adjustable feet ensure furniture is level on any surface



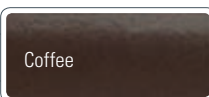
WEIGHT CAPACITY

Top Shelf – 130 lbs. / 59 kg

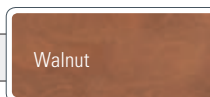
Mid Shelves – 50 lbs. / 22 kg

Bottom Shelf – 75 lbs. / 34 kg

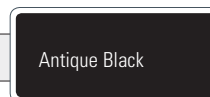
FINISH OPTIONS



Coffee



Walnut



Antique Black

SANUS Basic Series Furniture

NEW

MODEL

BFV546

Three-shelf AV stand with drawers

DIMENSIONS (w x d x h)

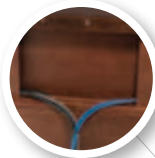
46.1" x 19.5" x 24.7"
117.1 x 49.5 x 62.7 cm

DRAWER DIMENSIONS (w x d x h)

18.3" x 15.5" x 8.3"
46.5 x 39.4 x 21.1 cm

FINISH

Walnut - BFV546-WA1



Removable back panel provides quick and easy access to components



FMS Compatible



ELM701 Compatible



Adjustable feet ensure furniture is level on any surface



Quick and easy assembly without the need for tools



Dual pull-out media drawers help organize remotes, gaming equipment and other devices

WEIGHT CAPACITY

Top Shelf – 130 lbs. / 59 kg

Mid Shelves – 50 lbs. / 22 kg

Bottom Shelf – 75 lbs. / 34 kg



Model BFV546-B1 shown with SANUS Foundations Natural Series model NF30 and SANUS Foundations FMS System

SANUS Basic Series Furniture

MODEL BFAV48 Three-Shelf Corner AV Stand



DIMENSIONS (w x d x h)
47.8" x 20.5" x 30.2"
121.4 x 52.1 x 76.7 cm

TOP SHELF SIZE
47.8" x 20"
121.4 x 52.1

MID SHELVES SIZE
25.3" x 17.5"
64.3 x 44.5 cm

BOTTOM SHELF SIZE
25.3" x 17.5"
64.3 x 44.5 cm

FINISH
Chestnut – BFAV48-CN1
Chocolate – BFAV48-CH1

FEATURES
Vented shelves
allow heated air
to escape

FEATURES (cont.)
Quick and easy
assembly without
tools
Deep shelf
capacity



WEIGHT CAPACITY | Top Shelf – 150 lbs / 68 kg | Mid Shelves – 50 lbs / 22.7 kg | Bottom Shelf – 50 lbs / 22.7 kg

MODEL BFV146 Three-Shelf Flat-Panel AV Stand



DIMENSIONS (w x d x h)
46" x 20" x 23.6"
116.8 x 50.8 x 59.9 cm

TOP SHELF SIZE
45.5" x 19.6" x 23.6"
115.7 x 49.8 x 59.9 cm

MID SHELF SIZE
39.1" x 15.1"
99.3 x 38.4 cm

BOTTOM SHELF SIZE
16" x 16"
40.6 x 40.6 cm

FINISH
Chestnut – BFV146-CN1
Chocolate – BFV146-CH1

FEATURES
Removable
back panel
Cable management
holes
Six-way
adjustable hinges



WEIGHT CAPACITY | Top Shelf – 125 lbs / 56.7 kg | Mid Shelf – 50 lbs / 22.7 kg | Bottom Shelf – 50 lbs / 22.7 kg

MODEL BFAV550 Three-Shelf Flat-Panel AV Stand



DIMENSIONS (w x d x h)
50" x 20.4" x 22"
127 x 51.8 x 55.9 cm

TOP SHELF SIZE
40" x 15"
101.6 x 38.1 cm

MID SHELF SIZE
44.5" x 15.7"
113 x 39.9 cm

BOTTOM SHELF SIZE
50" x 18.9"
127 x 48 cm

FINISH
Chestnut – BFAV550-CN1
Chocolate – BFAV550-CH1

FEATURES
Generous cable
management
channels
Unrestricted
airflow to keep
AV gear cool



WEIGHT CAPACITY | Top Shelf – 125 lbs / 56.7 kg | Mid Shelf – 50 lbs / 22.7 kg | Bottom Shelf – 50 lbs / 22.7 kg



FINISH OPTIONS

Chestnut

Chocolate

SANUS Basic Series Furniture

MODEL BFAV344 Three-Shelf Flat-Panel AV Stand



DIMENSIONS (w x d x h)
44" x 19" x 23"
111.8 x 48.3 x 58.4 cm

TOP SHELF SIZE
44" x 19"
111.8 x 48.3 cm

MID SHELF SIZE
35.2" x 17"
89.4 x 43.2 cm

BOTTOM SHELF SIZE
35.2" x 17"
89.4 x 43.2 cm

FINISH
Black – BFAV344-B1

FEATURES
Generous cable management channels

FEATURES (cont.)
Unrestricted airflow to keep AV gear cool
Adjustable feet



WEIGHT CAPACITY | Top Shelf – 125 lbs / 56.7 kg | Mid Shelf – 50 lbs / 22.7 kg | Bottom Shelf – 50 lbs / 22.7 kg

MODEL BFV145 Audio Video Stand



DIMENSIONS (w x d x h)
46.3" x 17.7" x 21.1"
110.7 x 45 x 53.6 cm

TOP SHELF SIZE
46.2" x 17.7"
117.3 x 45 cm

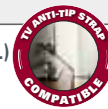
MID SHELF SIZE
37.4" x 15.4"
95 x 39.1 cm

BOTTOM SHELF SIZE
37.4" x 15.4"
95 x 39.1 cm

FINISH
Black – BFV145-B1

FEATURES
Strong and shatter resistant shelves
Adjustable feet

FEATURES (cont.)
Generous cable management channels
Unrestricted airflow to keep AV gear cool



WEIGHT CAPACITY | Top Shelf – 150 lbs / 68 kg | Mid Shelf – 50 lbs / 22.7 kg | Bottom Shelf – 75 lbs / 34 kg



FINISH OPTION

High-Gloss Black