

G-TRAP™

Primacoustic G-Trap is a stand-alone combination broadband absorber and bass trap that helps control excessive bass in a room while acting as a sound barrier gobo (go-between) in the studio. Sound absorption is achieved by combining three acoustical principles into a single device: to handle mid-range and upper frequencies, two 2" thick absorptive panels are mounted on the front and back. These are made from 6 lbs. per cubic foot high-density encapsulated fiberglass. Between the acoustic panels is a rigid membrane that acts as a sound block for high frequencies and as an impedance barrier for low frequencies. An air cavity is created by the plywood enclosure which serves to further attenuate bass in the troublesome 100Hz region. The G-Trap enclosure is made from Baltic birch plywood with an easy to clean natural wood finish. The G-trap ships flat to save freight and it takes about 15 minutes to assemble!

SPECIFICATIONS:

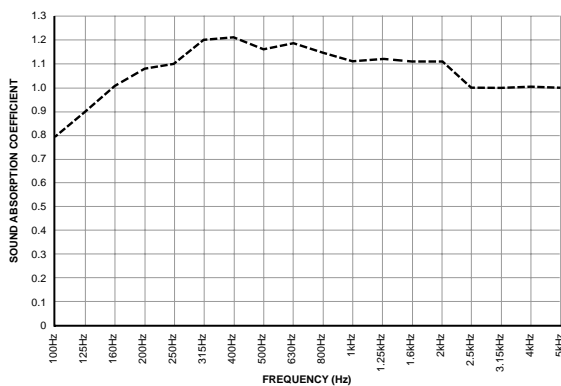
Frame Material	Baltic Birch Plywood with dovetail corner joints
Dimensions	36" (914mm) x 24" (609mm) x 10" (254mm)
Panel Material	Formed, semirigid inorganic glass fibers; Density 6.0 lbs pcf (96 kg/m ³)
Fabric Facing	Acoustically transparent polyester
Ridgid Membrane	1/4" hardboard.
Order Number	Z840-1120-xx (xx denotes color code 00=Black; 03= Beige; 08=Grey)

ABSORPTION CHARACTERISTICS*:

Sound absorption data (NRC values).

50Hz	80Hz	125Hz	250Hz	500Hz	1kHz	2kHz	4kHz	5kHz
0.95	1.10	1.20	1.08	1.29	1.22	1.15	1.05	1.00

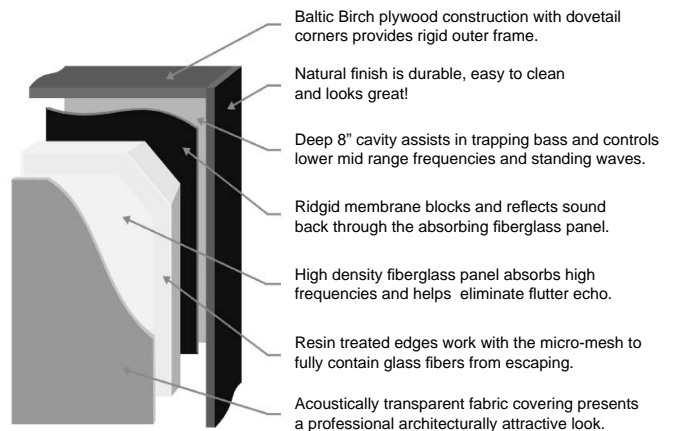
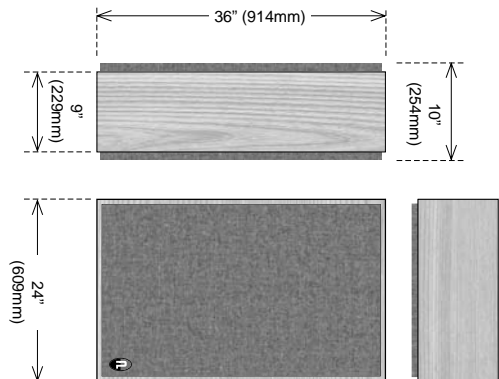
*Theoretical absorption based on Broadway panel test results and 1/4 wavelength calculation.


FIRE & BURN PERFORMANCE:

TEST	CLASS	FLAME SPREAD	SMOKE DENSITY
ASTM E 84-05*	1 OR A	15 FSI	155 SD
CAN/UL-S102	1 OR A	15 FSC1	155 SD

Test data provided by Bodycote Materials Testing Inc.

*Fire and burn test data applies to the acoustic panel only and does not include the plywood encasement for fire-hazard or fire-risk assessment. Please consult your local building authority and/or insurance underwriter to ensure the product meets local building codes.


APPLICATION:

G-Trap shown as go-between to isolate drums.

