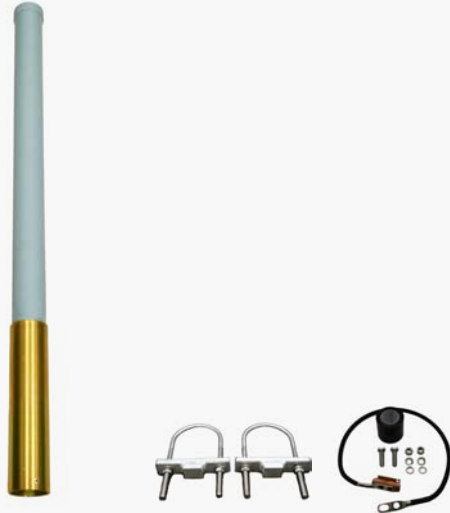




VS655 - High-Power Antenna Kit



The **VS655 High-Power Antenna Kit** is designed with the **VS636** antenna, **VS653** grounding kit, two mounting clamps and two RF connectors.

The VS636 antenna is a rugged collinear antenna with moderate gain and a wide vertical beamwidth. It has a 2.5dB gain and is designed for operation in all environmental conditions. The VS636 antenna provides maximum protection against corrosive gases, ultraviolet radiation, icing, salt spray, acid rain and wind blown abrasives.

The VS655 Antenna Kit is optimal for large-scale multi-story or multi-building radio paging with high-power transmitters.

Key Features:

- UHF or VHF Frequency Band
- High Performance Collinear Design
- Maximum Power of 500W
- High Density Fiberglass
- Complete Installation Kit
- Mounts to a 1.5" - 3" Support Pipe

Options, Accessories and Complementary Products:

Part Number	Description
VS642	Inline Lightning Arrestor
VS660	0.5" RG-8U Coax RF Transmission Line Assembly

Specifications:

	Antenna Dimensions (W x H)	Antenna Weight	Total Kit Weight		
Dimensions & Weight	135 - 165 MHz: 2.75" x 66"	11.0 lbs.	17.0 lbs.	Gain	2.5 dB
	148 - 174 MHz: 2.75" x 60"	10.0 lbs.	16.0 lbs.	Vertical Beam Width	38 Degrees
	380 - 470 MHz: 2.75" x 42"	7.0 lbs.	13.0 lbs.	VSWR	< 1.5 : 1
	420 - 480 MHz: 2.75" x 42"	7.0 lbs.	13.0 lbs.		
Maximum Power	500 Watts			Impedance	50 Ohm
Wind Survival	200 MPH			Polarization	Vertical
Material	Aluminum Anodized Sleeve Cap, Fiberglass Antenna			Cable Termination	Female Type "N" Connector
Mounting	For Optimum Coverage, Install the Antenna Externally from the Building, Usually at the Highest Point			Limited Warranty	One Year Parts and Labor
Color	Blue				

*Specifications Are Subject to Change Without Notification