

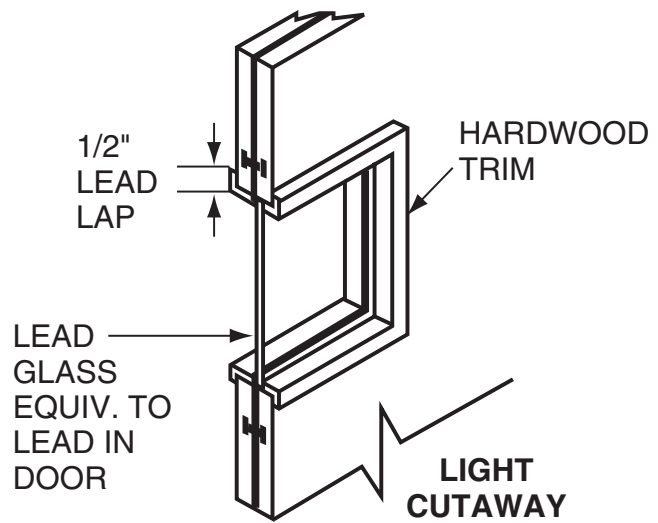
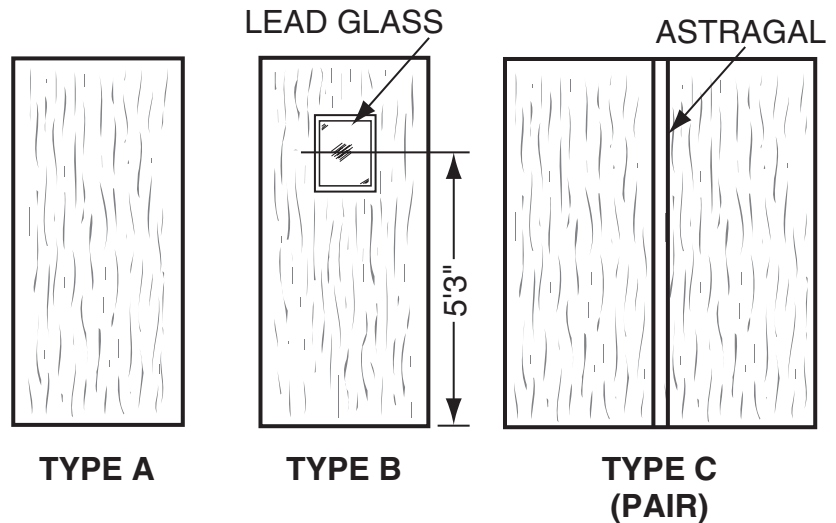
RADIATION SHIELDING

LEAD LINED SOLID CORE WOOD DOORS

Radiation Protection Products' Lead Lined Doors are manufactured using only the finest materials and workmanship available. With constant quality control and ongoing inspection, you are assured of receiving the strongest and most functional Lead Lined Doors possible.

Radiation Protection Products' Lead Lined Doors are constructed using a single layer of sheet lead in the center of the door. Wood cores are laminated under hydraulic pressure on each side of the lead.

Radiation Protection Products' will manufacture Lead Lined Doors to your specifications with leaded glass windows and options as listed. We also supply steel braced, lead lined, hollow metal door frames.



LEAD GLASS DOOR DETAIL

LEAD GLASS must be a minimum of 6" (15cm) from edge of door!



1000 Superior Boulevard, Suite 310 • Wayzata, MN 55391
1.888.RINGRPP (1.888.746.4777) • TOLL FREE FAX: 1.866.554.8445
www.radiationproducts.com

servicing the nation's lead needs for over 50 years with a full line of radiation shielding products

RADIATION SHIELDING

LEAD LINED SOLID CORE WOOD DOORS (CONT.)

LEAD LINED DOOR ORDERING INFORMATION

Orders for Lead Lined Doors should include the following information:

- Exact width and height
- Swing (see swing selector below)
- Lead thickness
- Any options and locations
- Size and location of leaded glass, W x H
- Bevel (i.e. 1/8" in 2", 3°)
- On double doors, indicate which leaf to receive astragal
- Fire rating (Intertek 20 min.)
- Finish (Veneer or Plastic Laminate)
- Light proof seals

On Pre-hung Doors, include the following additional information:

- Wall thickness
- Hinges and number
- Pivots
- Lock set or latch set
- Size of leaded glass (lead lined glass)
- Swing (see swing selector above)
- Type of frame (i.e. standard hollow metal)
- Lead thickness

Stock sizes: 2'0" x 7'0", 2'6" x 7'0", 3'0" x 7'0", 3'6" x 7'0", 4'0" x 7'0"

Options: Cutout for Leaded Glass, Pre-Hung, Custom Wood Veneer, Plastic Laminate and 20 min. Fire Constructed.

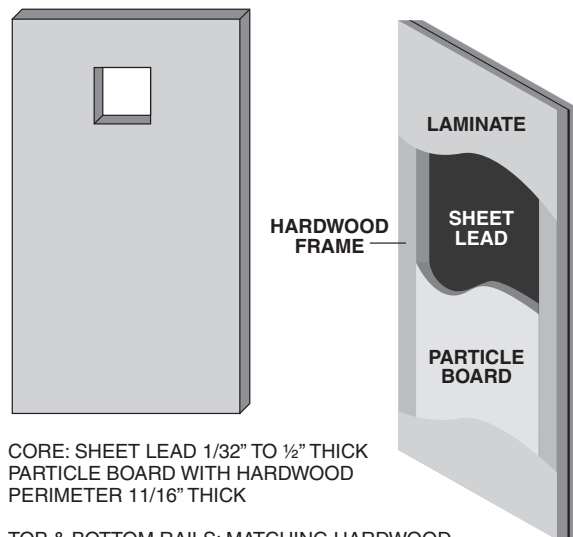
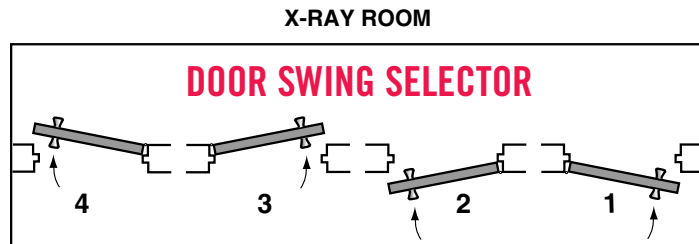
Note: Radiation Protection Products uses 1-1/2 pair Heavy Duty Ball Bearing Steel Hinges. Custom doors quoted upon receipt of specifications.

Radiation Protection Products can supply any type of Plastic Laminate Face Panels, as well as Face Panels of Natural Birch, Red Oak and other wood veneers.

Lead thickness from 1/32" to 1/2" in Wood Doors.

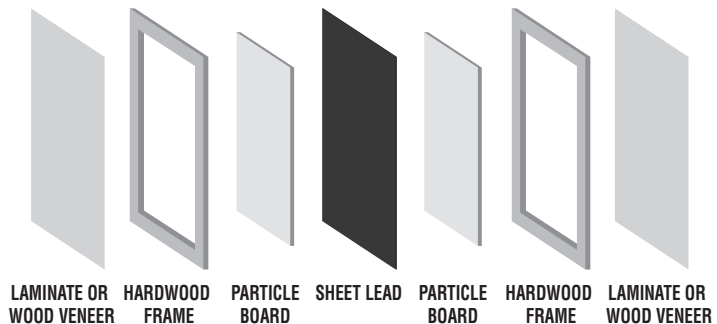
All Lead Lined Doors are manufactured in accordance with N.W.M.A. Industry Standard Special Construction Wood Flush Doors #I.S.I.4-80.

NOTE: All Radiation Protection Products' Doors are custom made, non-cancellable and non-returnable.



CORE: SHEET LEAD 1/32" TO 1/2" THICK
PARTICLE BOARD WITH HARDWOOD PERIMETER 11/16" THICK

TOP & BOTTOM RAILS: MATCHING HARDWOOD
STILES: MATCHING HARDWOOD
VENEER: HIGH PRESSURE PLASTIC LAMINATE OR WOOD VENEER



1000 Superior Boulevard, Suite 310 • Wayzata, MN 55391
1.888.RINGRPP (1.888.746.4777) • TOLL FREE FAX: 1.866.554.8445
www.radiationproducts.com

servicing the nation's lead needs for over 50 years with a full line of radiation shielding products

RADIATION SHIELDING LEAD LINED PRE-HUNG & CUSTOM DOORS

PRE-HUNG DOORS

Pre-hung Doors might be the answer for that special job. Radiation Protection Products, Inc. can supply you the door, frame, hinges, lockset or latch set and all the accessories in one package.

Radiation Protection Products uses a variety of face panels. We offer Natural Birch, Red Oak and other wood veneers plus plastic laminates. Basic lead thicknesses range from 1/32" to 1/2" in wood doors. Special order doors and door pairs are available as quoted.

Lead Lined Door Options:

- Cutout for leaded glass
- Pre-hung
- Custom wood veneer
- Plastic laminate
- 20 minute fire constructed

Orders for Doors shall include the following information:

- Width and height (specify 7'0" or 6'8")
- Finish (veneer or plastic laminate)
- Lead thickness
- Any options and locations
- Size and location of leaded glass, W x H
- On double doors, indicate which leaf to receive astragal

Complete specifications/drawings upon request.

FIRE RATED

Radiation Protection Products' fire rated lead lined doors are 20 minute constructed as certified by Intertek.

NEUTRON SHIELDED DOORS

We manufacture and install customizable radiation shielding doors (also referred to as neutron doors) to meet all types of shielding requirements. (Linear Accelerators, Gamma Knife, ACCURAY Cyber-Knife©, P.E.T., Proton Therapy, H.D.R., Cobalt, and more.)

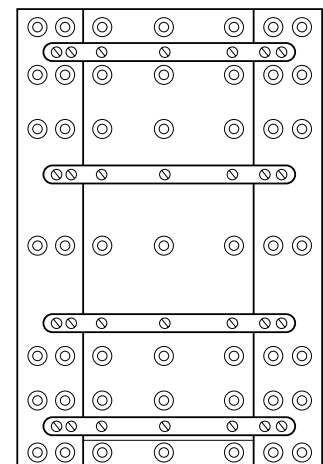
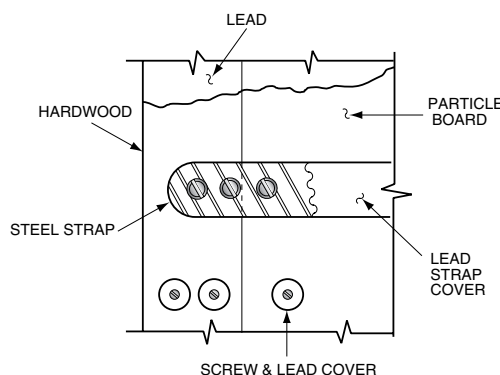
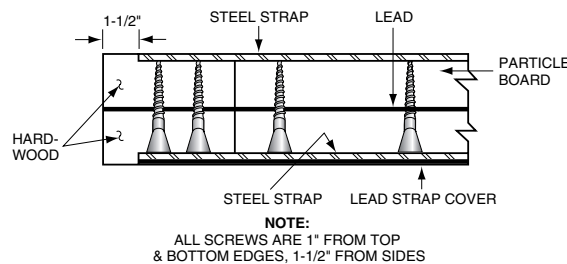
Most common types of radiation shielding door systems:

- Linear Accelerator Maze Neutron Doors
- Linear Accelerator Direct Shielded Neutron Doors
- ACCURAY Cyber-Knife© Radiation Shielding Doors
- H.D.R. Radiation Shielding Doors

Designed for:

- Safety: multiple safety devices and back up safety devices offered with all radiation shielding doors

- Convenience: all radiation shielding doors, and the installation thereof, are completed with the utmost attention to the client's and patient's convenience
- Versatility: every RPP radiation shielding door (neutron door) is completely customizable to meet the client's exact requirements.
- Upgradeability: all radiation shielding doors can be manufactured to offer extra door space and additional strength to easily accommodate an upgrade with minimal
- Patient Throughput: RPP Strives to achieve maximum patient throughput without sacrificing safety
- Longevity: RPP's custom designed radiation therapy door frames are designed to achieve superior longevity. Our unique gusset/dowel system used in conjunction with the bent steel reinforcement, ensures a perfect marriage between both hinges, even after years of heavy usage.



20 MIN.
FIRE RATED CORE



1000 Superior Boulevard, Suite 310 • Wayzata, MN 55391
1.888.RINGRPP (1.888.746.4777) • TOLL FREE FAX: 1.866.554.8445
www.radiationproducts.com

servicing the nation's lead needs for over 50 years with a full line of radiation shielding products