



High-quality, architecturally pleasing, innovative access doors for walls, ceilings, ducts, floors and roofs



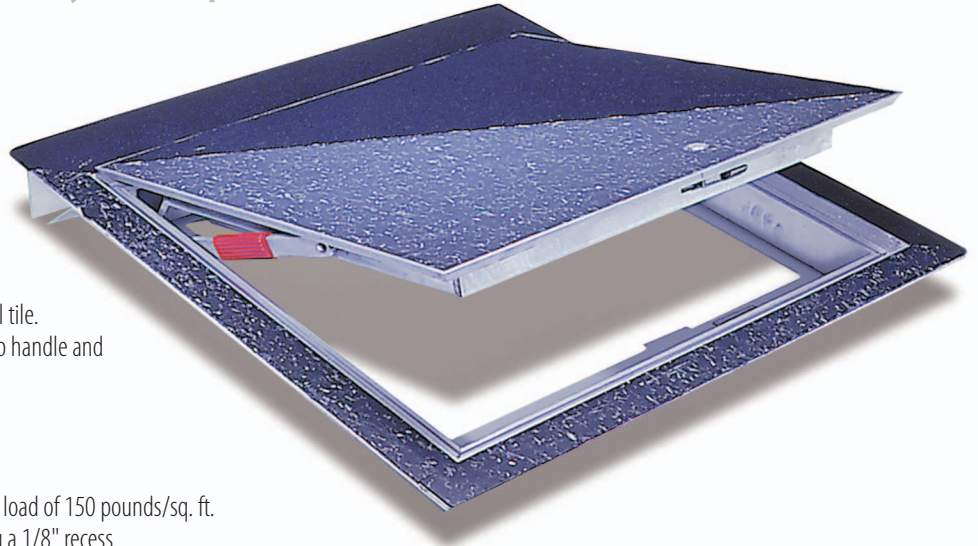
Floor Door Recessed 1/8" for Vinyl Tile/Carpet FT-8040

Application

- Designed for interior and exterior applications that require an access opening that will blend in with the surrounding floor material

Product Features

- Recessed 1/8" to accommodate carpeting and vinyl tile.
- Door panel is equipped with a flush aluminum drop handle and an automatic hold open arm



FT-8040 Floor Door Specifications:

Material: Aluminum door and frame

Door: 1/4" smooth aluminum plate reinforced for live load of 150 pounds/sq. ft.

Extruded edging is welded to door panel, providing a 1/8" recess

Frame: Angle frame fabricated from aluminum extrusion with integral 1" anchor flange on three sides and welded anchor straps on the hinge side

Hinge: Extruded aluminum hinges are welded to inside of door panel and pivot on stainless steel pins. Hold open arm with red Vinyl grip allow automatic opening

Opening Device: Door panel to open to 90 degrees, locking door in open position, and allowing for easy control when closing door panel. Stainless steel torsion bars provide lift assistance

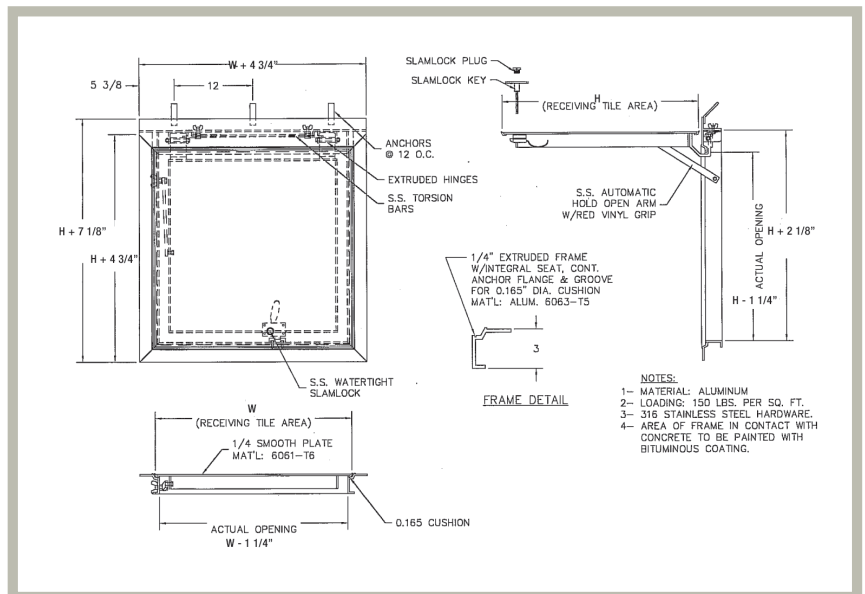
Standard Latch: Stainless steel slamlock with a fixed inside handle, removable outside handle, and removable threaded plug

Finish: Mill finish with bituminous coating applied to exterior of frame

AVAILABLE SIZES (Special sizes available upon request)

NOMINAL DOOR SIZE W X H		WEIGHT PER DOOR	
inches	mm	lbs.	kg.
24 X 24	610 X 610	45	20.5
24 X 30	610 X 762	55	25
24 X 36	610 X 914	60	27.2
30 X 30	762 X 762	60	27.2
30 X 36	762 X 914	70	31.8
36 X 36	914 X 914	75	34
42 X 42	1067 X 1067	100	45.4
48 X 48*	1220 X 1220	155	70.4
48 X 72*	1220 X 1829	220	99.9
60 X 60*	1524 X 1524	225	102.2

*Double Leaf



For detailed specifications see submittal sheet