

# CALRAD

## 30 Series - Connectors

Technical drawings and specifications are available for these connectors. Please ask your Calrad sales representative for details.



**30-440** Red  
**30-441** Black  
Dual banana plug, gold plated. .24" cable opening. 0.75" centers.



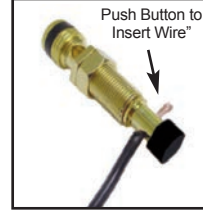
**30-440-NK** Red  
**30-441-NK** Black  
Dual banana plug, nickel plated. .24" cable opening. 0.75" centers.



**30-444** Black  
**30-445** Red  
Insulated banana jack. Supplied with soldering lug and nuts.



**30-601** 1 Red, 1 Black  
**30-601-BK** 1 Black  
**30-601-RD** 1 Red  
**Banana/Binding Post**  
Solderless speaker termination on each end. Accepts banana style connectors or raw speaker cable up to 14AWG. Mounts in 3/8" hole.



**30-601S-BK** Black  
**30-601S-RD** Red  
Gold plated binding post with push button on one end and banana jack on the other end. Threaded barrel top screws off to accept 14 Ga wire.



**30-615-BK** Black  
**30-615-RD** Red  
Spade terminal, heavy duty gold plated, screw type adjustment with black or red band. .25" cable opening.



**30-613-BK** Black  
**30-613-RD** Red  
**30-613** Red&Black  
Spade terminal, gold plated crimp on connector, with P.V.C. cover, black or red. .15" to .3" cable opening.



**30-609-RD** Red  
**30-609-WH** White  
Speaker terminals with solder/solderless speaker pin. White or red color band. Accepts 8-18 awg. cable. Gold plated with black chrome finish.



**30-614-BK** Black  
**30-614-RD** Red  
**Solderless Gold Speaker Pins**  
Notched pin design prevents accidental push pin removal. Slotted or hex set screw. Accepts 10-18 Awg. Cable.



**30-606-BK** Black  
**30-606-RD** Red  
Solderless speaker pin plug. Accepts up to 8 awg wire. Gold plated with red or black ID band options.



**30-610-RB** 1 Red, 1 Black  
**30-610-RBBK** 2 Black  
**30-610-RBRD** 2 Red  
Rubber Speaker pin plug, gold plated with P.V.C. cover, crimp style.



**90-799** Black  
**90-800** Red  
5-way binding posts. Plastic insulation. Has .1875" keyed threaded mounting shaft. Mounts in panels up to .25" thick.



**30-612**  
Gold Speaker Terminals with hex set-screw. Pack of 4 with Hex wrench. Accepts up to 10 Awg cable.



**30-438**  
BNC Female to dual standard banana plugs. 0.75" centers.



**30-439**  
BNC Male to dual binding posts for wire or standard banana plugs. 0.75" centers.



**30-460**  
BNC Male to dual standard banana plugs. 0.75" centers.



**30-461**  
BNC Female to dual binding posts for wire or standard banana plugs. 0.75" centers.



**30-369**  
Right angle, 2-pin Male speaker plug. .23" x .13" cable opening.



**30-392**  
2-pin inline Male speaker plug. .23" x .11" cable opening.  
**30-393**  
2-pin inline Female speaker plug. .26" x .17" cable opening.



**30-382**  
In-line solderless Motorola type plug. .26" cable opening.



**30-381**  
Antenna-type plug. To fit Calrad 30-380.



**30-383**  
Motorola type antenna in-line twist on jack, no soldering. .3" cable opening.



**30-380**  
Chassis mount antenna jack. Female receptacle. .4" hole size.