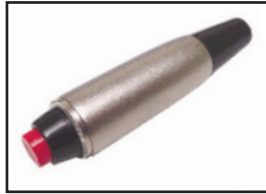


CALRAD

40 Series - Security Switches

40-625 INLINE PUSH BUTTON SWITCH

Red N/O momentary push button switch mounted in a silver XLR housing. Operating voltage 125Vac, 3Amp max. current. Accepts up to .30" cable.



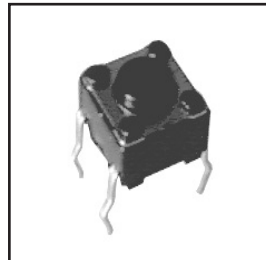
40-698 SPST MOMENTARY PUSH TO MAKE SWITCH

1 Amp, 125 Vac. Mounting hole: 1/2". Overall length: 3/4".



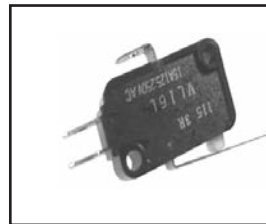
40-565 MICRO-MINIATURE PUSHBUTTON KEYBOARD SWITCH

Rating.....50 mA at 12 Vdc. Contact resistance.....100 MΩ
Max. Voltage breakdown..100 Vac/minute
Life expectancy.....100,000 cycles
Dimensions.....1/4" L X 1/4" W X 5/16" D



40-634 SPDT MICRO LEVER SWITCH

Leaf-type, normally open or normally closed momentary contact 1/2 Amp, 125 Vdc; 5 Amps, 1/6 h.p., 125 or 250 Vac. Body size: 1 1/8" x 5/8" x 3/8" not including contacts.



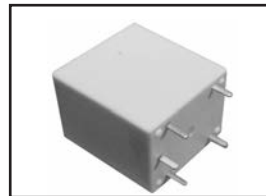
40-651 MOMENTARY FOOT SWITCH

Push to make, can be reversed. Used for remote operation. Metal case has slip-proof bottom, 60-inch lead, has 1/4" plug. Size: 3 1/8" x 3 3/8" x 1". Ratings: 0.5 amp, 125 volts AC.



40-678 12 VOLT DC SPDT RELAY

DC resistance 5K. Current 1.5 mA. Contact Rating: 500 mA.



SPDT MINIATURE RELAYS

Sensitive, lightweight, fully encased. Pin type terminal leads for easy connection on printed circuit boards. 3 Amp contacts.

Size: 5/8" x 3/4" x 29/32".
Specify model number.

40-674

6Vdc SPDT, DC resistance 100 ohms, current 60dc mA

40-675

12Vdc SPDT, DC resistance 350 ohms, current 34 mA

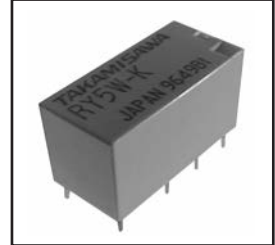


DPDT MINIATURE DIP STYLE RELAYS

40-760 5Vdc - 3.6 Vdc Min, DC Resistance 167 ohms

40-761 12Vdc - 8.5 Vdc Min, DC resistance 388 ohms

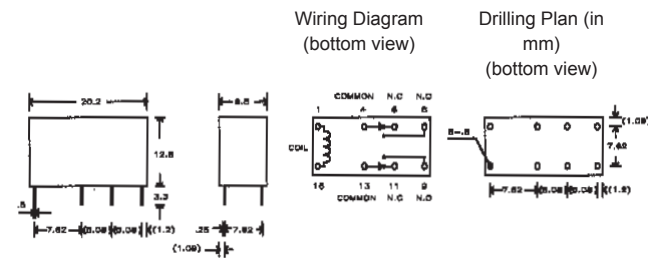
40-762 24Vdc - 16.8 Vdc Min, DC Resistance 960 ohms



Small and perfect for low signals in audio, computer, telcom, and security products. Fully sealed construction.

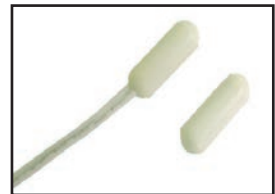
Contact rating (resistive) .5A 120Vac, 1Amp, 24 Vdc, .3Amp, 60 Vdc

Diagram for 40-760, 40-761, & 40-762



40-763 SMALL SECURITY MAGNETIC CONTACT (WHITE)

Closed circuit switch with magnet in place. 18" white wired leads exit at the end. Mounts with self adhesive tape. Size: L-1.1" x W-.371" x H-.24".



40-764 SMALL SECURITY MAGNETIC CONTACT (WHITE)

Closed circuit switch with magnet in place. 18" white wired leads exit at the middle. Size: L-1.1" x W-.371" x H-.24".



40-765 Small Security Magnetic Contact (White)

Closed circuit with magnet in place. Screw terminals accept 22-26 Awg cable. Mounts with self adhesive tape. Size: L-1.1" x W-.371" x H-.24".



Small Slotted Screw Driver Required



Screw Terminals

40-715 BI-PIN 6 VOLT INCANDESCENT BULB

