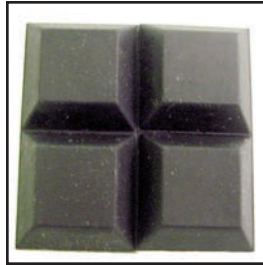


## 90 Series - Rubber Feet, Chassis Boxes & Tools

### 90-794

#### RUBBER FEET

Adhesive-backed molded bumpers apply instantly. Just peel off backing and apply to any dry, clean surface. 4 per pkg.  
Size: 0.129"(H) x .520"(sq.)



### 90-795

Same as 90-794 only larger.  
Size: 0.300"(H) x .880"(sq.)

### 90-796

#### RUBBER FEET

Adhesive-backed molded bumpers apply instantly. Just peel off backing and apply to any dry, clean surface. 4 per pkg.  
Size..... 0.400" Ht. x .880 dia.



### 90-797

#### RUBBER FEET

Adhesive-backed molded bumpers apply instantly. Just peel off backing and apply to any dry, clean surface. 4 per pkg.  
Size .....0.320" Ht. x .635" dia.



### 90-819

#### HEAVY DUTY ALUMINUM UTILITY BOX

Precision made. Ideal for mounting controls, intercom's and most transistor switching devices. Box wall thickness .085"  
Size.... 4.65"(L) X 3.65"(W) X 1.36"(H)



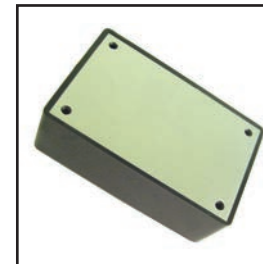
#### HANDY BOXES WITH ALUMINUM PANEL

Made of sturdy black ABS plastic, removable aluminum cover. Perfect for housing test equipment, experimental products.

90-784 ... 3 1/4"L x 2 1/8"W x 1 1/8"H

90-785 ..... 4"L x 2 1/8"W x 1 5/8"H

90-786 ..... 6 1/4"L x 3 3/4"W x 2"H



#### PLASTIC UTILITY BOXES

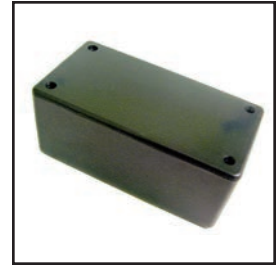
Slotted for circuit boards. Grey sturdy ABS plastic.

90-880 .....2 1/8"L x 4 1/8"W x 1 3/4"H

90-881 ..... 2 1/2"L x 5 1/8"W x 1 3/4"H

90-882 .....3 1/2"L x 5 7/8"W x 2 1/2"H

90-883 .....4 1/2"L x 7 3/8"W x 2 9/16"H



### 90-936

#### FLEXIBLE RATCHET DRIVER SET

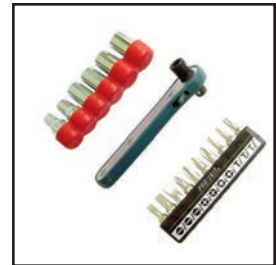
Comfortable ratchet wrench with flexible neck and ten inter-changeable tips. Flex neck is detachable. Bits: 3 slotted, 4 phillips, 3 torx.



### 90-937

#### 17 PIECE OFFSET RATCHET & SOCKET DRIVER SET - Metric

Handy ratchet wrench with ten interchangeable tips or six sockets. Sockets are in fractions of an inch. Sockets: 5mm, 6mm, 6.5mm, 8mm, 9mm, 10mm. Bits: 3 slotted, 4 phillips, 3 torx.



### 90-842

#### 6-PIECE PHILLIPS SCREWDRIVER SET

Screwdrivers are made of hardened and tempered molybdenum steel. Black point blades are against reflection of light, swivel top is suitable for miniature work. Contains: 0.5-0.4-0.3-0.2-0-1.2 x 40mm



### 90-843

#### 7-PIECE HEX BALL DRIVER SET WITH HARDENED TIPS

Screwdrivers are made of hardened and tempered molybdenum steel. Black point blades are against reflection of light, swivel top is suitable for miniature work. Contains: 0.7-0.9-1.3-1.5-2.0-2.5-3.0 x 40mm

