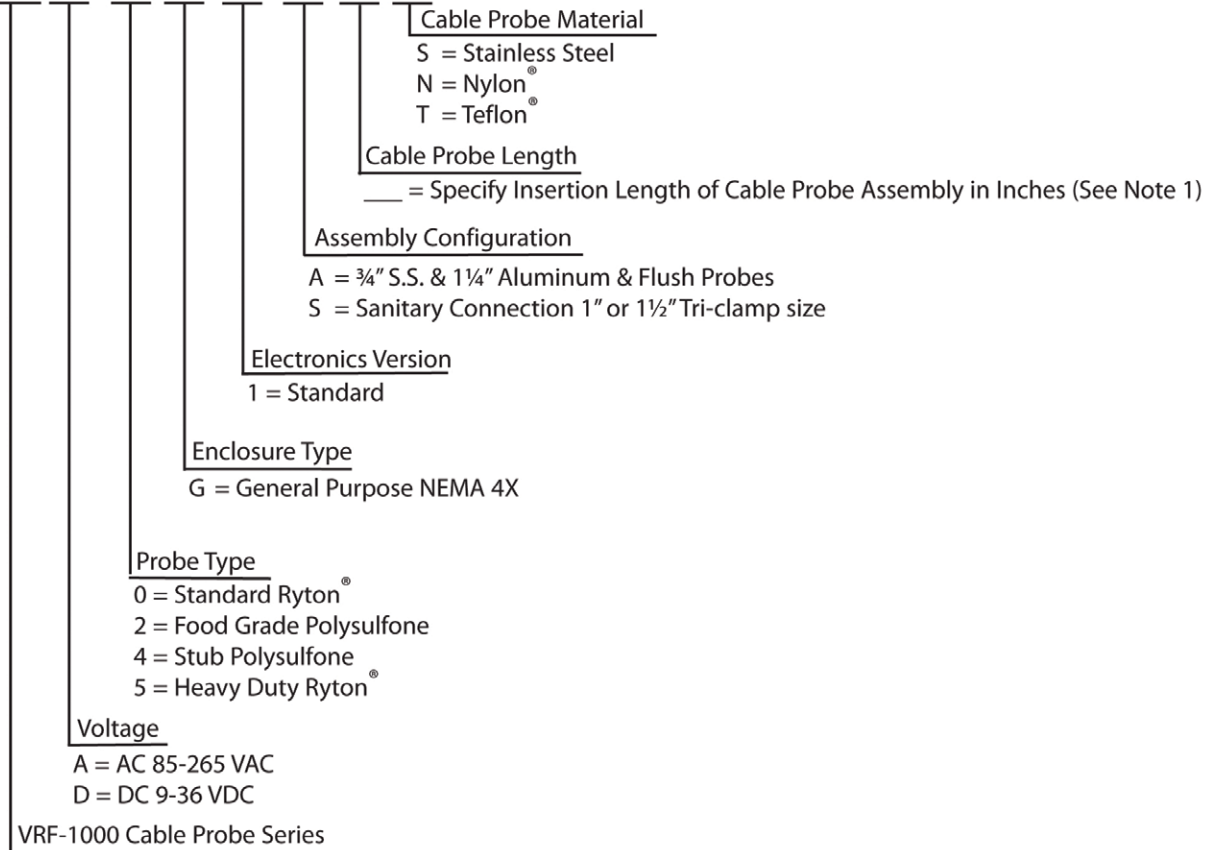


VRF-1000

How to Order VRF-1000 Cable Series

VRF1C



Note 1: Maximum length 45 feet (13.71mm) or 540 inches (13716mm).

The VRF™ Cable Series should be used when tank mid or low-level monitoring is desired and the unit must be mounted from the top of the tank. The Cable Series provides the same features and reliability of the standard probe series, however, with a bendable cable, the unit can be conveniently mounted in enclosed environments.

Electrical Specifications for Integral and Cable Series

Universal Input Power: 85 VAC - 265 VAC
DC input power: 9 VDC - 36 VDC

Power: 3 watts

Output Relay: DPDT 6 amps @ 240 VAC, 6 amps @ 30 VDC, Minimum load 12V/100mA

Temperature Range: -40° F to 158° F (-40° C to 70° C)

Sensitivity: Dip-switch selectable for 1pF, 2pF, 5pF or 10pF

Time Delay: Dip-switch selectable for 1, 4, 8 or 15 seconds

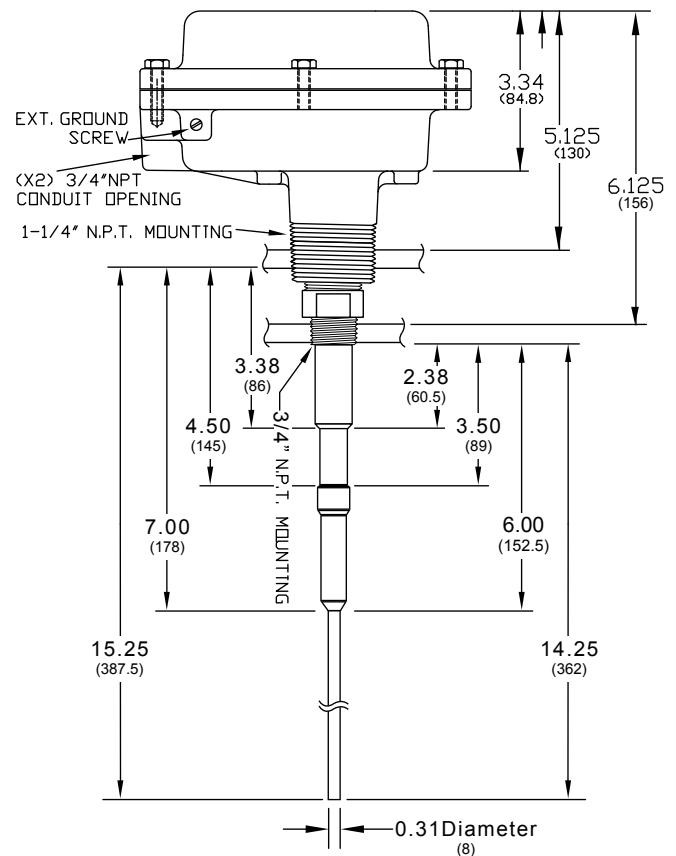
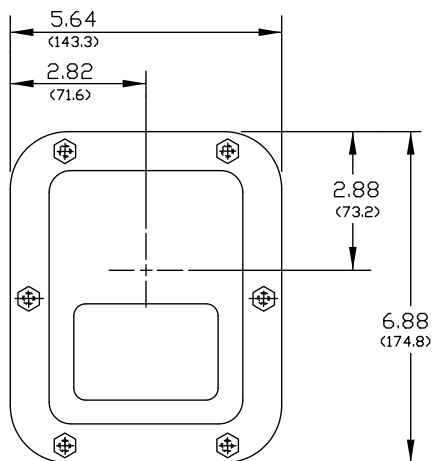
Fail Safe: High-Low level failsafe dip-switch

Calibration: Push-button, intelligent recalibration

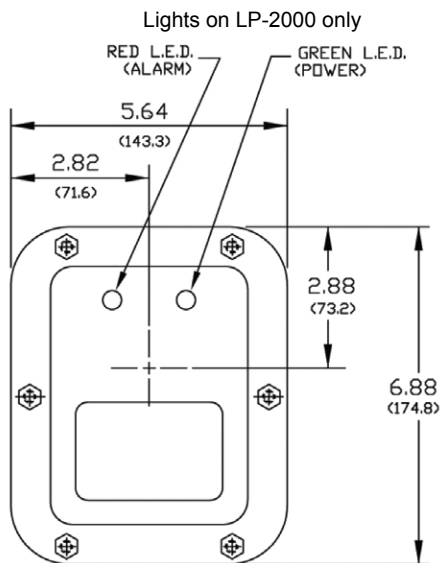
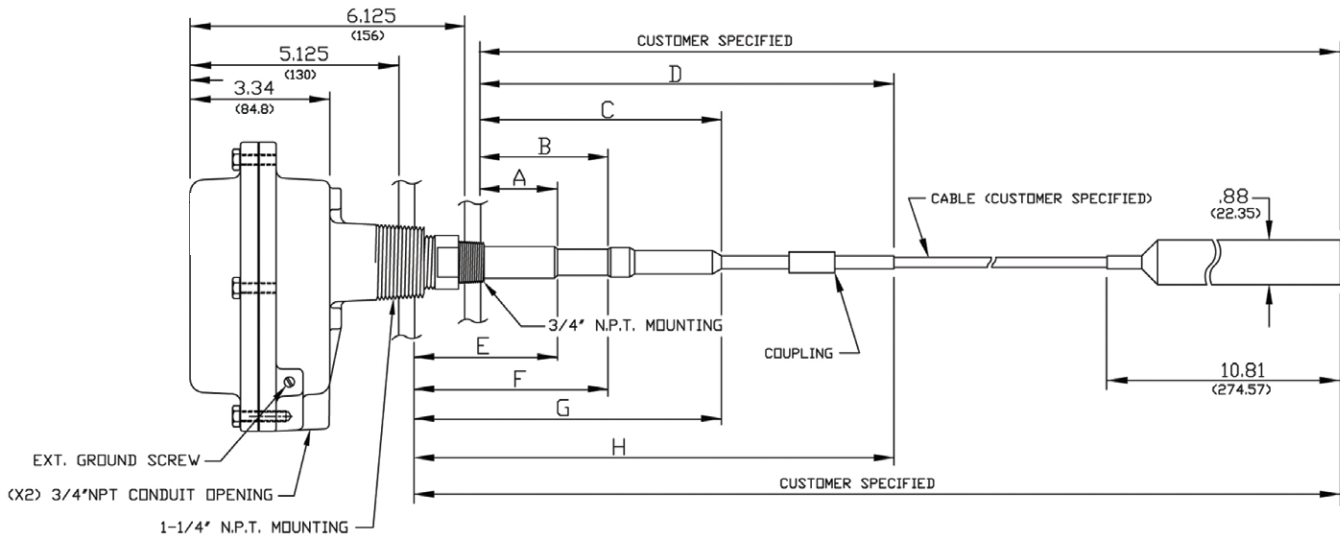
Approvals: FM and CSA listed for non-hazardous enclosure type NEMA 4X

Dimensions

VRF-1000 Integral Series



Dimensions VRF-1000 Cable Series



H	11.50 (292.1)	16.25 (412.8)	8.12 (206.2)
G	7.00 (178)	11.75 (298.5)	3.63 (92.2)
F	4.50 (114.5)	10.00 (254)	3.25 (82.6)
E	3.38 (86)	8.50 (216)	2.75 (69.9)
D	10.50 (266.7)	15.25 (387.4)	7.12 (180.8)
C	6.00 (152.5)	10.75 (273)	2.63 (66.8)
B	3.50 (89)	9.00 (228.5)	2.25 (57.2)
A	2.38 (60.5)	7.50 (190.5)	1.75 (44.5)
APPROX DIM'S	STD. & FOODGRADE	H.D.	STUB



150 Venture Boulevard · Spartanburg, SC 29306
Tel: (800) 778-9242 · (864) 574-8060
Fax: (864) 574-8063
E-mail: sales@bindicator.com
www.bindicator.com

venture
MEASUREMENT

VRF180200 Rev. D

2012 All rights reserved.
All data subject to change without notice.