



- External LED operation and alarm lights
- DPDT output relay
- External function test using magnetic fob
- No calibration required
- Liquid/solid interface

Features and Benefits

Simple Mechanical Mechanism
No calibration required

1 ¼" or 1 ½" NPT Top or Side Mount

Multiple mounting options to choose from

Dual-Tine, Self-Cleaning Action
Won't "rat hole" like single-tine vibratory units

Field Selectable Fail-Safe Operation

Single model will work in low or high level

DPDT Switch

Gives the user capability to turn off or on up to two auxiliary devices

Adjustable Time Delay

Switch activation can be delayed to user defined time settings (0-25 seconds)

Ability to Sense Lightweight Materials

Densities as low as 2 lbs/ft³ (32 kg/m³)

Captive Screws

No lost screws

The Pulse Point™ is an electronic vibratory level control especially effective in lightweight powders and granular solids. Because the Pulse Point™ senses material using a mechanical principle, the dielectric constant of the material is irrelevant.

How to Order

LP1 - - - - - 30 - - - (Maximum - 120") (3048mm)

Type (Specify Insertion Length in Inches if Applicable)

- O = No Pipe Extension (Standard NPT Mounting)
- A = Galvanized ¾" Pipe Extension
- B = 316 S.S. ¾" Pipe Extension
- 1 = Mild Steel Mounting Plate & Galvanized ¾" Pipe Extension
- 3 = 304 S.S. Mounting Plate & 316 S.S. ¾" Pipe Ext.

Mounting Configuration

- A = 1 ½" NPT Mounting
- C = 1 ½" Pipe Extended (High Temperature Cable)
- D = 1 ¼" Pipe Extended (Only Available With Type 1 Tuning Fork & High Temp Cable)
- E = 1 ¼" NPT Mounting (Only Available With Type 1 Tuning Fork & High Temp Cable)

Enclosure Rating

- G = General Purpose - NEMA 4X
- D = Dust Ignition Proof - NEMA 9 CSA Approved

Voltage

- 1 = 120 VAC
- 2 = 240 VAC

Enclosure Material

- A = Aluminum, Polyester Coated
- S = 304 S.S. (Function Test Not Available With S.S. Enclosure)

Tuning Fork

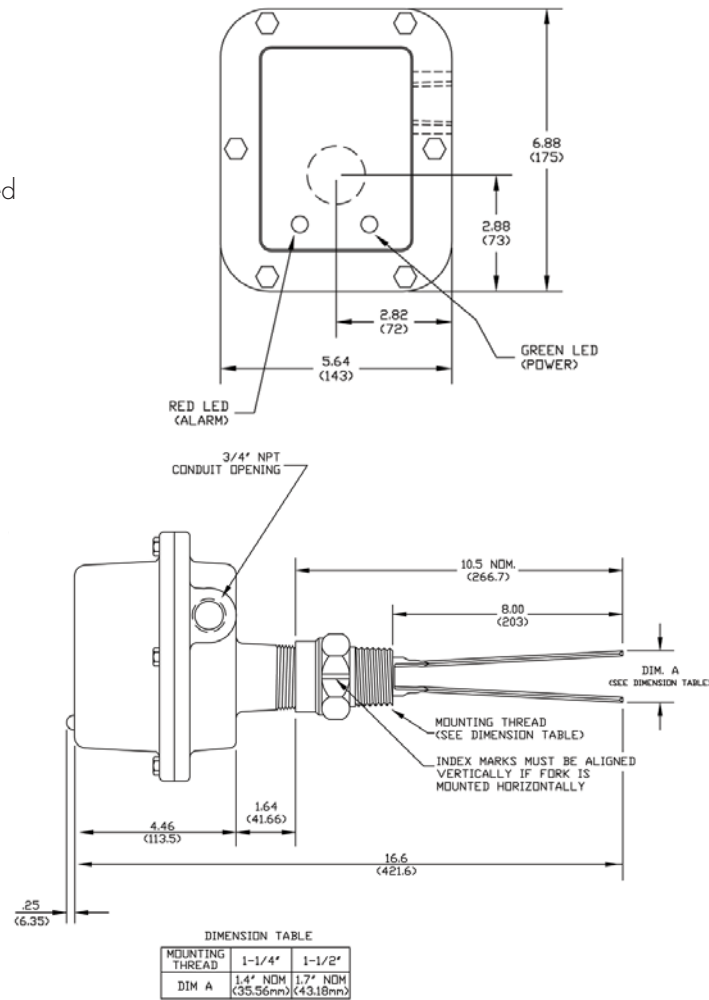
- 1 = 316 S.S.
- 3 = 316 S.S. - Teflon® Coating
- 5 = Liquid/Solid Interface - 316 S.S.

Pulse Point™ LP-100 Integral Unit

Specifications

- Enclosure Material:** Polyester coated aluminum or 304 S.S.
- Enclosure Rating:** General Purpose NEMA 4X,
Explosion proof NEMA 9
- Operating Temperature:** Electronics: -40° F to 175° F (-40° C to 80° C)
Tuning Fork: -55° F to 248° F (-48° C to 120° C)
- Mounting:** 1½" or 1¼" NPT, extended forks can be mounted directly through 1½" or 1¼" NPT coupling, mild steel or 304 S.S. mounting plate
- Conduit Entry:** ¾" NPT
- Fail Safe Circuitry:** Field selectable high/low level
- Tuning Fork:** 316 S.S. standard; 316 S.S. with Teflon® coating; 316 S.S. liquid/solid interface
- Extended Pipe Material:** Galvanized or 316 S.S.
- Maximum Pipe Extension:** 10ft (3m)
- Status Indicator:** External green LED: power
External red LED: alarm
- Time Delay:** Field programmable: ON, OFF or both
Adjustable (0-25 sec)
- Output:** 5A DPDT @ 125 VAC or 28 VDC
- Power Consumption:** 5 VA
- Power Requirements:** 120 VAC or 240 VAC, 50/60 Hz
- Pressure Rating:** 150 psi (10.5 kg/cm²) with 1½" NPT
5 psi (0.35 kg/cm²) with mounting plate
- Minimum Material Density:** 2 lbs/ft³ (32 kg/m³)
- Approvals:** CSA listed on all 1½" & 1¼" configurations for general purpose, CSA listed on all 1½" & 1¼" configurations for dust ignition proof; FM listed for explosion-proof Class I, Division I, Groups C, D, DI and Class II, Division I, Groups E, F & G, excluding pipe extended models - not available with stainless steel enclosure.

Dimensions



150 Venture Boulevard · Spartanburg, SC 29306
Tel: (800) 778-9242 · (864) 574-8060
Fax: (864) 574-8063 E-mail: sales@bindicator.com
www.bindicator.com