

ANCHOR FASTENER / BUTT FASTENING ASSEMBLY

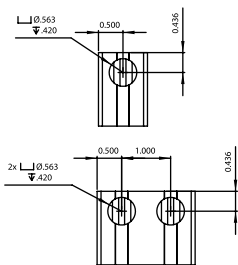


ITEM #	DESCRIPTION
660020	15 S / 40 S Anchor Fastener Counterbore
660022	10 S / 25 S Anchor Fastener Counterbore
660021	15 S / 40 S Butt Fastener Counterbore
660023	10 S / 25 S Butt Fastener Counterbore

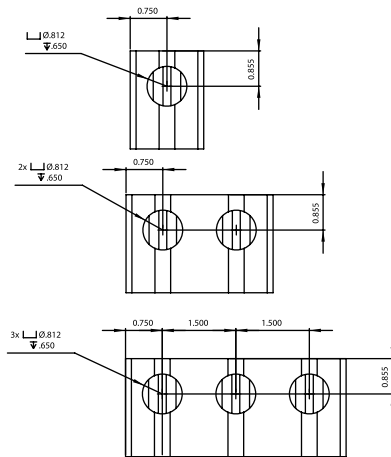
- Counterbore is needed to insert the anchor fastener assembly or butt fastener assembly
- Counterbore locations for each extrusion must be specified as shown below.
- Anchor fasteners & butt fasteners are on page 4:07.

ANCHOR FASTENING

10 SERIES / 25 SERIES

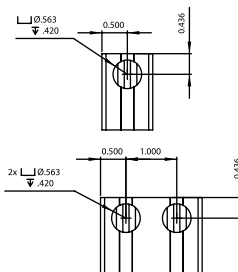


15 SERIES / 40 SERIES

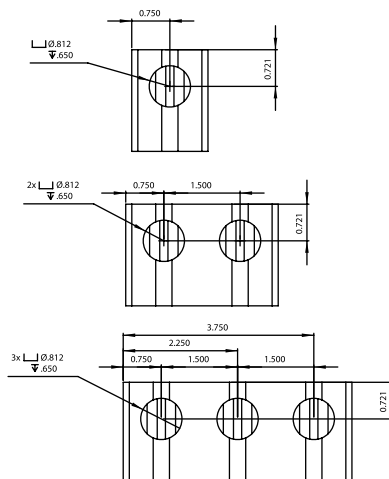


BUTT FASTENING

10 SERIES



15 SERIES



ORDERING NOTE

Counterboring requirements should be described by specifying:

1. The extrusion Item Number or Description
2. The quantity of extrusions
3. The machining service number
4. The end to be machined and the T-Slot location at which the counterbore is required
5. The length of the extrusion.

When multiple counterbores are needed on one profile, they should all be called out together, with a hyphen (-) separating each end / T-Slot location callout (see example). See page 11:02 for information regarding T-Slot location callouts.

EXAMPLE

A project requires that two lengths of profile be machined for an anchor fastener assembly. One of the lengths is the 1.5" x 1.5" @ 41" extrusion profile and requires the counterboring at one end only, in slot A1 and A3 of the profile. The other length is the 1.5" x 3" extrusion profile @ 45" that requires machining for two anchor fasteners at each end, in slot A3-A6 and B3-B6 of the profile only. The counterbore service would be ordered as follows:

ITEM #	QTY	MACHINING SERVICE #	LENGTH
650005 (TS 1515)	1	660106 A1/.75"-A1/44.25"	41"
650008 (TS 1530)	1	660020-A3-A6-B3-B6	45"
	1	660003	
	1	660006	
	6	660020	

(Counterbore machining services are priced per counterbore required.)