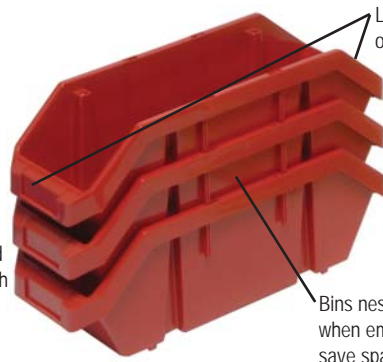


Quick Pick Bins & Wire Shelving Systems



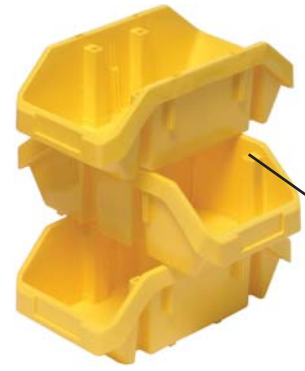
Stack 'em

Double reinforced sides add strength and prevents bin from spreading when stacked.



Nest 'em

Large label slot on both sides
Bins nest when empty to save space



Cross Stack 'em

Built-in stacking ledges allow secure stacking and cross stacking.

"Open 24/7 and yes, on both sides too!"



Create up to 4 compartments



Optional dividers may be used front to back, side to side or both at the same time, dividing the bin into four sections.

QuickPick Bin

The most unique storage bins available.

This double open hopper bin provides front and back access to stored parts.

These heavy-duty, polypropylene storage bins provide an open hopper front and back, allowing double access to stored parts. Bins stack one on top of the other, both vertically and cross wise and nest when empty for space efficiency. Optional dividers may be used front to back, side to side or both at the same time, dividing the bin into four sections. A molded in label holder on both the front and back of the bin allow for easy parts identification. Bins can be used on standard metal or wire shelving as well as on desks, bench tops or work stations. Available in 6 sizes and in 3 colors: Blue, Yellow and Red.

MODEL NO.	DIMENSIONS L" x W" x H"	CTN QTY	CTN WGT	CROSS DIVIDER	CTN QTY	LENGTH DIVIDER	CTN QTY
QP965	9-1/2" x 6-5/8" x 5"	20	15 lbs	CD965	10	LD965	10
QP1265	12-1/2" x 6-5/8" x 5"	20	19 lbs	CD1265	10	LD1265	10
QP1285	12-1/2" x 8-3/8" x 5"	20	22 lbs	CD1285	10	LD1285	10
QP1496	14" x 9-1/4" x 6-1/2"	20	26 lbs	CD1496	10	LD1496	10
QP1867	18-1/2" x 6-5/8" x 7"	10	16 lbs	CD1867	10	LD1867	10
QP1887	18-1/2" x 8-3/8" x 7"	10	18 lbs	CD1887	10	LD1887	10

DOUBLE SIDED ACCESS!

Fastest Shipping IN THE INDUSTRY

Heavy Duty Wire Shelving with QuickPick Bins Complete Packages

These unique shelving packages provide "double" access to stored parts. QuickPick Bins (available in Blue, Yellow and Red) with the double open hopper front and back, allow two users to access stored product at the same time! This ergonomic, space efficient work station is the ultimate space saver! Shelving units measure 18"D x 48"W x 74"H and may be ordered with or without a mobile kit. These heavy duty units offer an 800 lb. capacity per shelf. Optional dividers may be used front to back, side to side or both at the same time, dividing the bin into four sections. See chart above for ordering instructions. A molded in label holder on both the front and back of the bin allows for easy parts identification.



WR7-18-10671687

MODEL NO.	NO. OF BINS	DIMENSIONS L" x W" x H"	SHIP WGT
W7-12-30	30	12-1/2" x 6-5/8" x 5"	111 lbs
W7-12-26	10	12-1/2" x 6-5/8" x 5"	109 lbs
	16	12-1/2" x 8-3/8" x 5"	
W7-12-28	20	12-1/2" x 6-5/8" x 5"	110 lbs
	8	12-1/2" x 8-3/8" x 5"	
W7-12-24	24	12-1/2" x 8-3/8" x 5"	108 lbs
W7-14-18	18	14" x 9-1/4" x 6-1/2"	107 lbs
W7-18-30	30	18-1/2" x 6-5/8" x 7"	129 lbs
W7-18-26	10	18-1/2" x 6-5/8" x 7"	128 lbs
	16	18-1/2" x 8-3/8" x 7"	
W7-18-28	20	18-1/2" x 6-5/8" x 7"	128 lbs
	8	18-1/2" x 8-3/8" x 7"	
W7-18-24	24	18-1/2" x 8-3/8" x 7"	125 lbs
Mobile Kit			
WR-00	Mobilizes Wire Shelving Unit		14 lbs

QuickPick Bin Mobile Wire Cart

Mobilized double sided cart with bins.

These heavy-duty, polypropylene storage bins provide an open hopper front and back, allowing double access to stored parts. Unit comes in a 2 or 3 shelf configuration complete with four casters (two rigid and two with brakes). Overall dimensions: 18"D x 36"W x 40"H. Q-Stor cart is easy to assemble. Bins are available in 3 colors: Blue, Yellow and Red. One color per unit. See chart above to order Length and/or Cross Dividers.



WRC2-1836-1867

MODEL NO.	NO. OF BINS	BIN DIMENSIONS L" x W" x H"	SHIP WGT
WRC2-1836-1265	10	12-1/2" x 6-5/8" x 5"	49 lbs
WRC3-1836-1265	15	12-1/2" x 6-5/8" x 5"	64 lbs
WRC2-1836-1285	8	12-1/2" x 8-3/8" x 5"	48 lbs
WRC3-1836-1285	12	12-1/2" x 8-3/8" x 5"	63 lbs
WRC2-1836-1867	10	18-1/2" x 6-5/8" x 7"	55 lbs
WRC3-1836-1867	15	18-1/2" x 6-5/8" x 7"	73 lbs
WRC2-1836-1887	8	18-1/2" x 8-3/8" x 7"	54 lbs
WRC3-1836-1887	12	18-1/2" x 8-3/8" x 7"	72 lbs