

**BASCO®  
TYPE 500ES  
HEAT  
EXCHANGERS**

**API Heat Transfer**

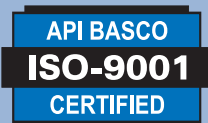
*...world leaders in heat transfer technology*



## Quality, Value, Innovation and Performance

*For over 60 years, API Heat Transfer's commitment to these core principles is what sets us apart.*

*We take pride in our tradition of supplying excellent heat transfer solutions and providing exceptional customer service.*



## Standard Products – Extraordinary Performance

Known for our excellence in engineering, quality and product design, API Heat Transfer provides customer driven solutions for the world's most demanding applications on a daily basis. From our diverse portfolio of shell and tube, air cooled and plate heat exchange technology our experienced team can design heat exchange solutions for virtually any application. Born from this depth of expertise, API Heat Transfer Standard Products offer built-in precision, uncompromised quality and unmatched performance in a comprehensive and cost effective line of pre engineered and readily available products.

## Basco Type 500ES

Quality, Value, Innovation and performance can all be found in the Basco Type 500ES. Introduced as an extension to the industry workhorse Type 500, the 500ES offers an extended surface on the shell side to provide a higher heat transfer rate per volumetric space, effectively offering an answer to applications requiring high heat transfer efficiency in a more compact size.

The Basco Type 500ES Shell & Tube Heat Exchanger offers the cost effectiveness that comes with having a standard design while easily providing for various options to meet customer specific requirements.

- Units are available as Commercial Standard, ASME, PED or GB requirements.
- Flow configurations in single, two or four-pass arrangements available.
- Pressure Relief By-Pass option available.
- Heavy duty mounting brackets that can be reversed or rotated, and feature slotted holes for quick installation.
- Zinc anodes to neutralize the effects of galvanic corrosion.

## Typical Applications Include

- Compressor Systems
- Hydraulic Systems
- Stationary Engines
- Transmission Oil
- Turbines
- Paint Systems
- Lube Oil Consoles



## Quality Every Step of the Way

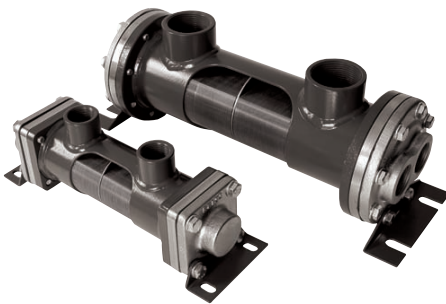
API Heat Transfer utilizes state of the art machining centers to convert raw material into highly specialized component parts. Skilled, experienced and certified welders and assemblers then transform these components into superior finished heat exchangers. ISO certified quality control, Demand Flow Technology (DFT) and lean manufacturing processes optimize our production cycle times without sacrificing manufacturing flexibility.



## More Value for Our Customers

As one of the world's largest designers and manufacturers of industrial heat exchangers, API Heat Transfer's strategy is to continually invest in people, equipment, product development, quality procedures and manufacturing processes to confirm and continue to earn the privilege of serving our customers.

### 500ES MODELS



#### 500 ES-S Dimensions

Shell Diameters: 2", 3", 5"  
 Tubes: 3/16" Copper – standard  
 3/16" 90/10 CuNi – optional  
 Tube sheets: Carbon Steel – standard  
 90/10 CuNi – optional  
 Flow: 1 and 2 pass  
 Options:  
 – Pressure Relieve bypass  
 – NPT, BSPP, SAE 4 Bolt  
 – SAE straight thread



#### 500 ES-B

Shell Diameters: 5", 6", 8", 10" and 12"  
 Tubes: 3/8" Copper – standard  
 3/8" 90/10 CuNi – optional  
 Tube sheets: Carbon Steel – standard  
 90/10 CuNi and stainless available  
 Flow: 1, 2 and 4 pass  
 Options:  
 – Pressure Relieve bypass  
 – NPT, BSPP  
 – SAE straight thread  
 10" and 12" product meet ASME Code design.

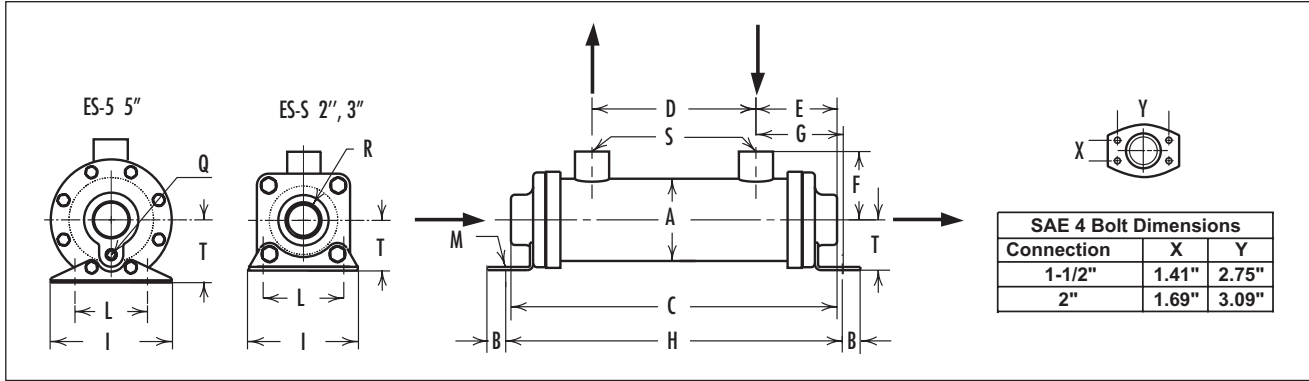


#### 500 ES-U

Shell Diameters: 2", 3", 5" and 6"  
 Tubes: 3/16" Copper – standard  
 3/16" 90/10 CuNi – optional  
 Tube sheets: Carbon Steel – standard  
 90/10 CuNi – optional  
 Flow: 2 and 4 pass  
 Options:  
 – Pressure Relieve bypass  
 – NPT, BSPP  
 – SAE straight thread

# 500 ES-S Dimensions

## 1 PASS UNIT



SAE 4 Bolt Dimensions		
Connection	X	Y
1-1/2"	1.41"	2.75"
2"	1.69"	3.09"

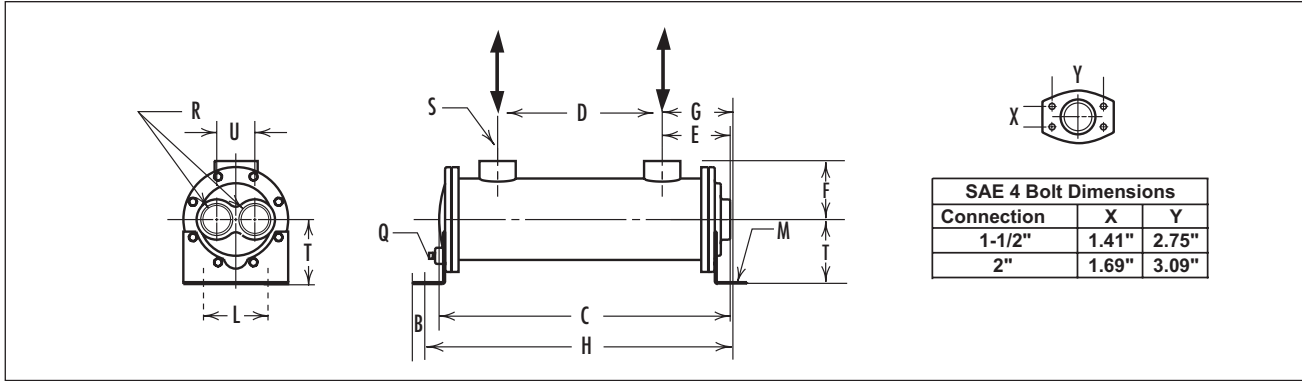
Size	C		E		Q	R	G		L		I	
	(mm)	(in)	(mm)	(in)	(in)	(in)	(mm)	(in)	(mm)	(in)	(mm)	(in)
02005	187	7 - 3/8"	66	2 - 5/8"			66	2 - 5/8"	63.5	2 - 1/2"	89	3 - 1/2"
02008	263	10 - 3/8"										
02010	314	12 - 3/8"										
02012	365	14 - 3/8"	82	3 - 1/4"	3/4"		83	3 - 1/4"	63.5	2 - 1/2"	89	3 - 1/2"
02014	416	16 - 3/8"										
02018	517	20 - 3/8"										
03008	283	11 - 1/8"										
03012	385	15 - 1/8"	103	4 - 1/16"	1/4"	1 - 1/4"	103	4 - 1/16"	76	3"	127	5"
03014	435	17 - 1/8"										
03018	537	21 - 1/8"										
03024	689	27 - 1/8"										
03036	994	39 - 1/8"										
05012	389	15 - 5/16"										
05014	440	17 - 5/16"										
05018	541	21 - 5/16"										
05024	694	27 - 5/16"										
05036	999	39 - 5/16"										
05048	1303	51 - 5/16"										

Size	A		B		D	F		H		M		S	T		AREA	
	(mm)	(in)	(mm)	(in)	(mm)	(mm)	(in)	(mm)	(in)	(mm)	(in)	(inches)	(mm)	(in)	m2	SQF
02005	65	2 - 9/16"	12	1/2"	55	53	2-1/16"	189	7 - 7/16"	9 x 16	3/8" x 5/8"	3/4"	41	1-11/16"	0.43	4.63
02008					97			265	10 - 7/16"						0.73	7.85
02010					148	316	12 - 7/16"	0.93	10.01							
02012					199	367	14 - 7/16"	1.13	12.16							
02014					250	418	16 - 7/16"	1.43	15.39							
02018					351	519	20 - 7/16"	1.74	18.72							
03008					76	272	10 - 11/16"	1.38	14.85							
03012	177	373	14 - 11/16"	2.18	23.46											
03014	90	3 - 9/16"	15	9/16"	228	73	2 - 7/8"	424	16 - 11/16"	11 x 19	7/16" x 3/4"	1-1/2"	66	2 - 5/8"	2.53	27.22
03018					330			526	20 - 11/16"						3.29	35.40
03024					482			678	26 - 11/16"						4.44	47.77
03036					787			983	38 - 11/16"						6.73	72.41
05012					157			392	15 - 7/16"						4.38	47.1288
05014	207	443	17 - 7/16"	5.17	55.6292											
05018	128	5 - 1/16"	20	13/16"	309	92	3 5/8"	544	21 - 7/16"	11 x 25	7/16" x 1"	1-1/2"	102	4"	6.73	72.4148
05024					461			697	27 - 7/16"						9.06	97.4856
05036					766			1002	39 - 7/16"						13.74	147.8424
05048					1071			1306	51 - 7/16"						18.41	198.0916

Product Performance per API-Basco Rating and Selection software.

# 500 ES-S Dimensions

## 2 PASS UNIT



Size	C		E		Q	R	U		G		L		I	
	(mm)	(in)	(mm)	(in)	(in)	(in)	(mm)	(in)	(mm)	(in)	(mm)	(in)	(mm)	(in)
02005	187	7 - 3/8"							67	2 - 5/8"				
02008	265	10 - 3/8"												
02010	314	12 - 3/8"	83	3 - 1/4"		3/8"	28	1 - 1/8"			63.5	2 - 1/2"	89	3 - 1/2"
02012	365	14 - 3/8"							85	3 5/16"				
02014	416	16 - 3/8"												
02018	517	20 - 3/8"												
03008	258	10 - 3/16"												
03012	360	14 - 1/8"												
03014	411	16 - 1/8"	91	3 - 9/16"	1/4"	1"	41	1 - 5/8"	95	3 - 3/4"	76	3"	127	5"
03018	513	20 3/16"												
03024	665	26 - 3/16"												
03036	995	39 - 3/16"												
05012	369	14 1/2"												
05014	420	16 1/2"												
05018	522	20 9/16"	113	4 - 7/16"	1/4"	1 1/4"	60	2 - 3/8"	110	4 - 5/16"	102	4"	165	6 - 1/2"
05024	674	26 9/16"												
05036	979	38 9/16"												
05048	1284	50 9/16"												

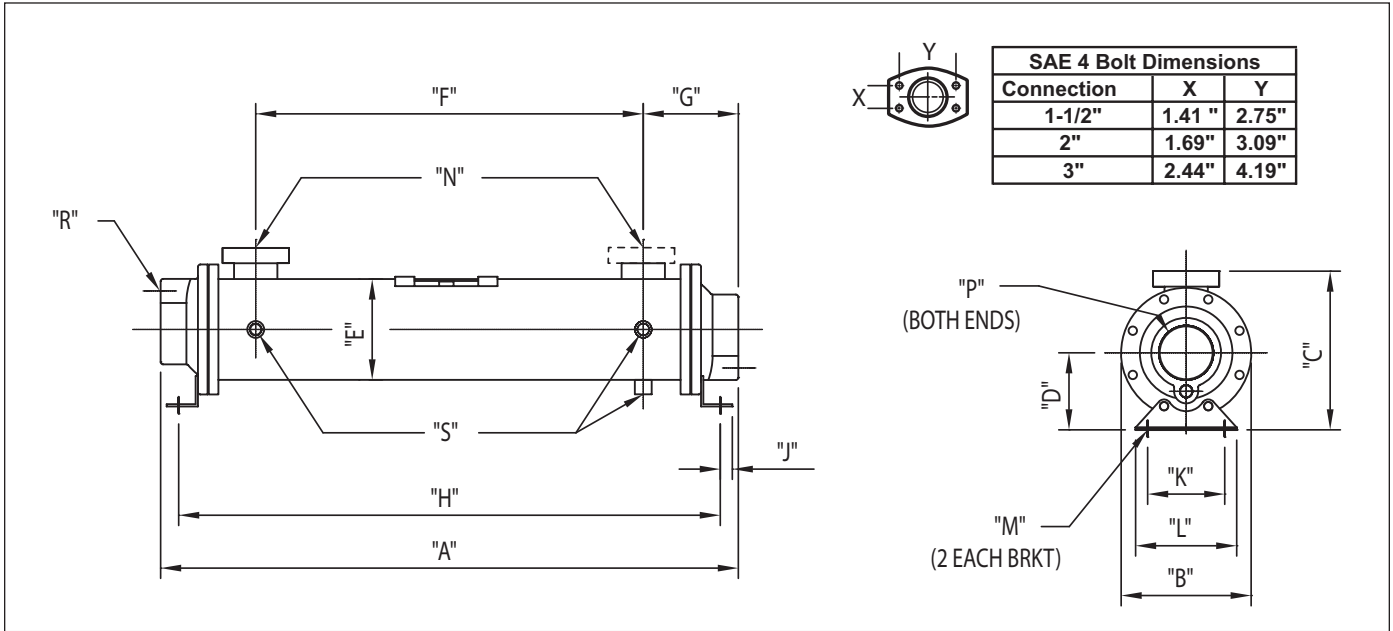
Size	A		B		D	F		H		M		S	T		AREA	
	(mm)	(in)	(mm)	(in)	(mm)	(mm)	(in)	(mm)	(in)	(mm)	(in)	(inches)	(mm)	(in)	m2	SQF
02005					55	53	2-1/16"	189	7 - 7/16"						0.43	4.63
02008					97			265	10 - 7/16"						0.73	7.85
02010	65	2 - 9/16"	12	1/2"	148			316	12 - 7/16"	9 x 16	3/8" x 5/8"	3/4"	41	1-11/16"	0.93	10.01
02012					199	57	2 - 1/4"	367	14 - 7/16"						1.13	12.16
02014					250			418	16 - 7/16"						1.43	15.39
02018					351			519	20 - 7/16"						1.74	18.72
03008					76			272	10 - 11/16"						1.38	14.85
03012					177			373	14 - 11/16"						2.18	23.46
03014	90	3 - 9/16"	15	9/16"	228	73	2 - 7/8"	424	16 - 11/16"	11 x 19	7/16" x 3/4"	1-1/2"	66	2 - 5/8"	2.53	27.22
03018					330			526	20 - 11/16"						3.29	35.40
03024					482			678	26 - 11/16"						4.44	47.77
03036					787			983	38 - 11/16"						6.73	72.41
05012					157			392	15 - 7/16"						4.38	47.1288
05014					207			443	17 - 7/16"						5.17	55.6292
05018	128	5 - 1/16"	20	13/16"	309	92	3 5/8"	544	21 - 7/16"	11 x 25	7/16" x 1"	1-1/2"	102	4"	6.73	72.4148
05024					461			697	27 - 7/16"						9.06	97.4856
05036					766			1002	39 - 7/16"						13.74	147.8424
05048					1071			1306	51 - 7/16"						18.41	198.0916

Product Performance per API-Basco Rating and Selection software.



# 500 ES-B 5", 6", 8" Dimensions

## 1 PASS - 5", 6", 8" UNITS



Size	A (in)	A (mm)	B (in)	B (mm)	C		D (in)	D (mm)	E (in)	E (mm)	F (in)	F (mm)	G (in)	G (mm)	H (in)	H (mm)
					NPT/BSPP SAE O-ring (in)	SAE Flange (in)										
05014	20	508.0	6 3/4	171.45	7.44	8	4	101.60	5 1/4	133.35	10 1/8	257.0	5	125.48	18 1/8	460.2
05024	30	762.0									20 1/8	511.0			28 1/8	714.2
05036	42	1066.8									32 1/8	815.8			40 1/8	1019.0
05054	60	1524.0									50 1/8	1273.0			58 1/8	1476.2
06024	30 1/8	765.0	7 3/4	196.85	8.56	9 3/8	4 1/2	114.30	6 1/4	158.75	19	482.6	5 9/16	141.22	28 1/8	714.2
06036	42 1/8	1069.8									31	787.4			40 1/8	1019.0
06048	54 1/8	1374.6									43	1092.2			52 1/8	1323.8
06054	60 1/8	1527.0									49	1244.6			58 1/8	1476.2
06060	66 1/8	1679.4	10 1/2	266.70	11.18	12 1/2	5 3/4	146.05	8 5/8	218.95	55	1397.0	7 1/4	184.15	64 1/8	1628.6
06072	78 1/8	1984.2									67	1701.8			76 1/8	1933.4
08024	33 1/4	844.6									18 3/4	476.3			29 7/8	759.0
08036	45 1/4	1149.4									30 3/4	781.1			41 7/8	1063.8
08048	57 1/4	1454.2	42 3/4	1085.9	53 7/8	1368.6										
08054	63 1/4	1606.6	48 3/4	1238.3	59 7/8	1521.0										
08060	69 1/4	1759.0	54 3/4	1390.7	65 7/8	1673.4										
08072	81 1/4	2063.8	66 3/4	1695.5	77 7/8	1978.2										
08084	93 1/4	2368.6	78 3/4	2000.3	89 7/8	2283.0										

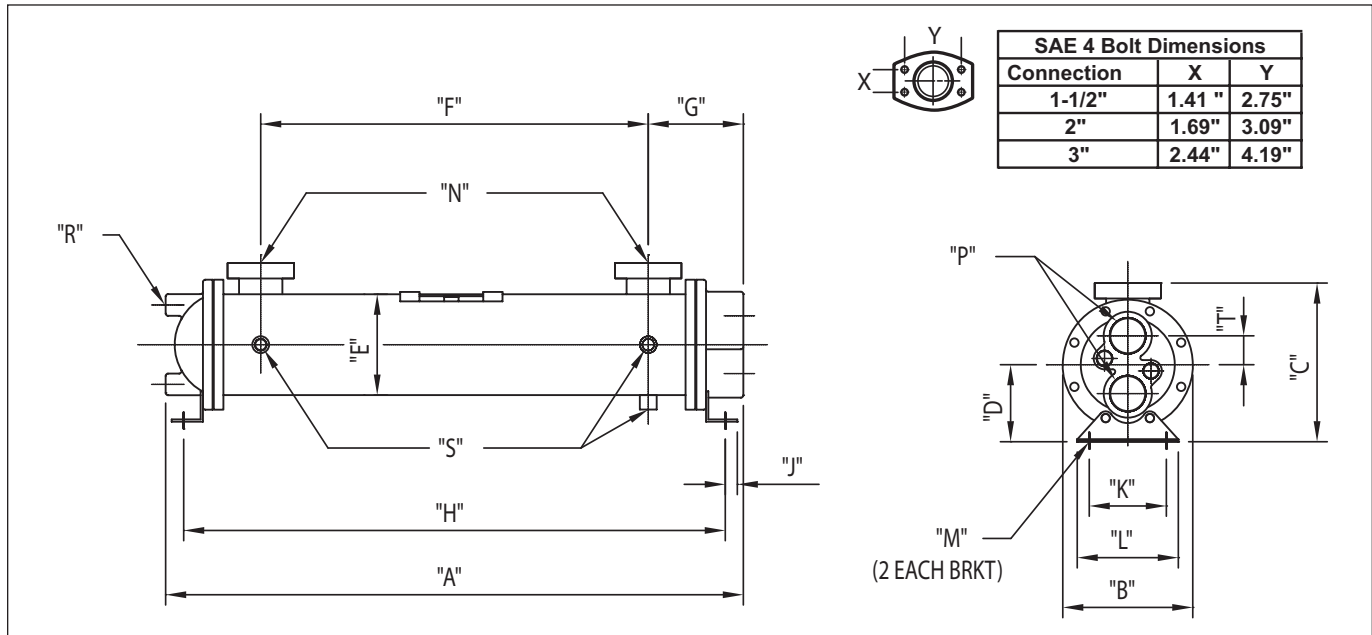
Size	J (in)	J (mm)	K (in)	K (mm)	L (in)	L (mm)	M (in)	M (mm)	N		P (in) NPT/BSPP	P (mm) NPT/BSPP	R (in) NPT/BSPP	R (mm) NPT/BSPP	S (in) NPT/BSPP	S (mm) NPT/BSPP
									NPT/BSPP Flange	SAE O-Ring						
05014	1	23.88		101.60	5 1/4	133.35	1/2" x 3/4" slot	12.7 x 19.0 slot	1-1/2	# 24	2.00	50.80	2 (3/8)	2 (76.2)	(3) 3/8	(3) (76.2)
05024																
05036																
05054																
06024	1	25.40	5	127.00	6 1/4	158.75	1/2" x 3/4" slot	12.7 x 19.0 slot	2	# 32	3.00	76.20	2 (3/8)	2 (76.2)	(3) 3/8	(3) (76.2)
06036																
06048																
06054																
06060	1 11/16	42.67	7	177.80	8 1/4	209.55	5/8 x 7/8 slot	15.7 x 22.3 slot	3	N/A	4.00	101.60	2 (3/8)	2 (76.2)	(3) 3/8	(3) (76.2)
06072																
08024																
08036																
08048																
08054																
08060																
08072																
08084																

Product Performance per API-Basco Rating and Selection software.

FOR 8" ASME CODE DESIGN CONTACT FACTORY.

# 500 ES-B 5", 6", 8" Dimensions

## 2 PASS – 5", 6", 8" UNITS



Size	A (in)	A (mm)	B (in)	B (mm)	C		D (in)	D (mm)	E (in)	E (mm)	F (in)	F (mm)	G (in)	G (mm)	H (in)	H (mm)	J (in)	J (mm)
					NPT/BSPP SAE O-ring (in)	SAE Flange (in)												
05014	20	508.0									10 1/8	257.0			18 1/8	460.2		
05024	30	762.0	6 3/4	171.45	7.44	8	4	101.60	5 1/4	133.35	20 1/8	511.0	4 15/16	125.48	28 1/8	714.2	1	23.88
05036	42	1066.8									32 1/8	815.8			40 1/8	1019.0		
05054	60	1524.0									50 1/8	1273.0			58 1/8	1476.2		
06024	30 1/8	765.0									19	482.6			28 1/8	714.2		
06036	42 1/8	1069.8									31	787.4			40 1/8	1019.0		
06048	54 1/8	1374.6	7 3/4	196.85	8.56	9 3/8	4 1/2	114.30	6 1/4	158.75	43	1092.2	5 9/16	141.22	52 1/8	1323.8	1	25.40
06054	60 1/8	1527.0									49	1244.6			58 1/8	1476.2		
06060	66 1/8	1679.4									55	1397.0			64 1/8	1628.6		
06072	78 1/8	1984.2									67	1701.8			76 1/8	1933.4		
08024	33 1/4	844.6									18 3/4	476.3			29 7/8	759.0		
08036	45 1/4	1149.4									30 3/4	781.1			41 7/8	1063.8		
08048	57 1/4	1454.2									42 3/4	1085.9			53 7/8	1368.6		
08054	63 1/4	1606.6	10 1/2	266.70	11.18	12 1/2	5 3/4	146.05	8 5/8	218.95	48 3/4	1238.3	7 1/4	184.15	59 7/8	1521.0	1 2/3	42.67
08060	69 1/4	1759.0									54 3/4	1390.7			65 7/8	1673.4		
08072	81 1/4	2063.8									66 3/4	1695.5			77 7/8	1978.2		
08084	93 1/4	2368.6									78 3/4	2000.3			89 7/8	2283.0		

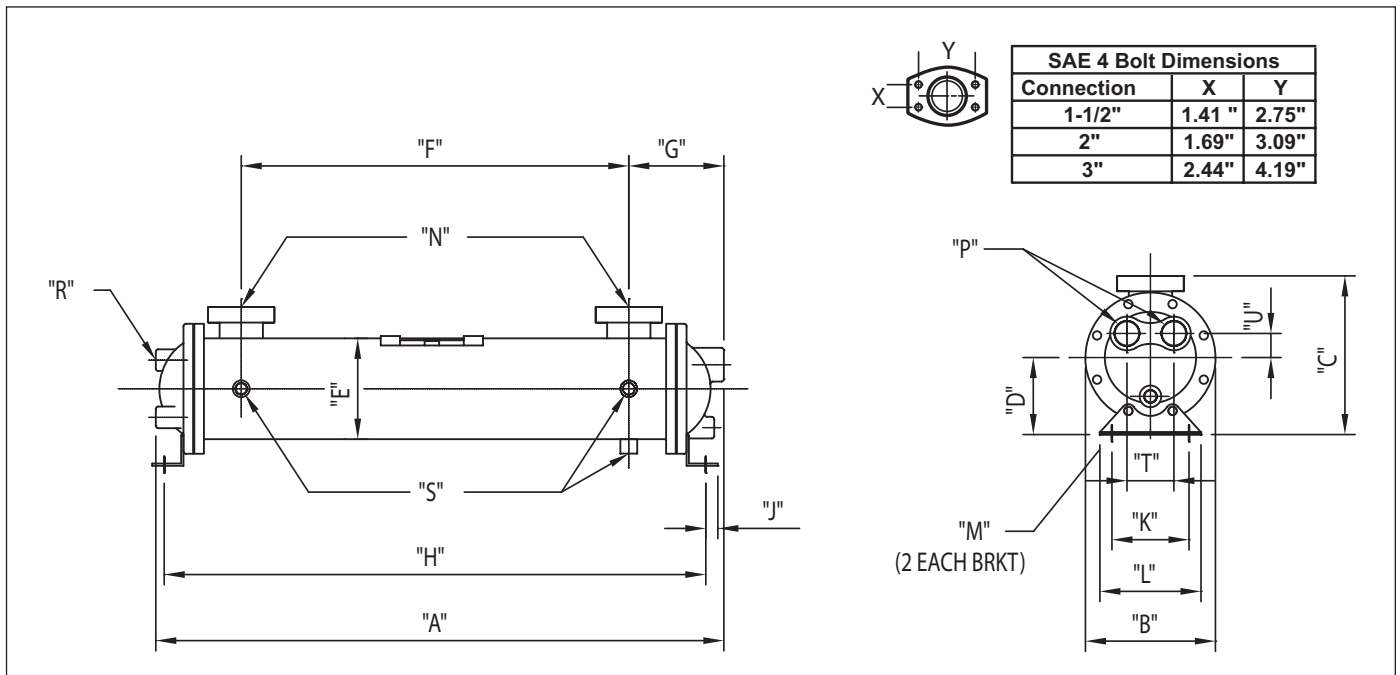
Size	K (in)	K (mm)	L (in)	L (mm)	M (in)	M (mm)	N		P (in)	P (mm)	R (in)	R (mm)	S (in)	S (mm)	T (in)	T (mm)
							NPT/BSPP Flange	SAE O-Ring								
05014																
05024	4	101.60	5 1/4	133.35					1 1/2	38.10					1 1/2	38.1
05036																
05054																
06024					1/2" x 3/4" slot	12.7 x 19.0 slot										
06036																
06048	5	127.00	6 1/4	158.75					2	50.80					1 9/16	39.624
06054																
06060											2 (3/8)	2 (76.2)	(3) 3/8	(3) (76.2)		
06072																
08024																
08036																
08048																
08054	7	177.80	8 1/4	209.55	5/8 x 7/8 slot	15.7 x 22.3 slot			2 1/2	63.50					2 1/4	57.15
08060																
08072																
08084																

Product Performance per API-Basco Rating and Selection software.

FOR 8" ASME CODE DESIGN CONTACT FACTORY.

# 500 ES-B 5", 6", 8" Dimensions

## 4 PASS – 5", 6", 8" UNITS



Size	A (in)	A (mm)	B (in)	B (mm)	C		D (in)	D (mm)	E (in)	E (mm)	F (in)	F (mm)	G (in)	G (mm)	H (in)	H (mm)	J (in)	J (mm)
					NPT/BSPP SAE O-ring (in)	SAE Flange (in)												
05014	20	508.0									10 1/8	257.0			18 1/8	460.2		
05024	30	762.0	6 3/4	171.45	7.44	8	4	101.60	5 1/4	133.35	20 1/8	511.0	4 15/16	125.48	28 1/8	714.2	15/16	23.88
05036	42	1066.8									32 1/8	815.8			40 1/8	1019.0		
05054	60	1524.0									50 1/8	1273.0			58 1/8	1476.2		
06024	30 1/8	765.0									19	482.6			28 1/8	714.2		
06036	42 1/8	1069.8									31	787.4			40 1/8	1019.0		
06048	54 1/8	1374.6	7 3/4	196.85	8.56	9.38	4 1/2	114.30	6 1/4	158.75	43	1092.2	5 9/16	141.22	52 1/8	1323.8	1	25.40
06054	60 1/8	1527.0									49	1244.6			58 1/8	1476.2		
06060	66 1/8	1679.4									55	1397.0			64 1/8	1628.6		
06072	78 1/8	1984.2									67	1701.8			76 1/8	1933.4		
08024	33 1/4	844.6									18 3/4	476.3			29 7/8	759.0		
08036	45 1/4	1149.4									30 3/4	781.1			41 7/8	1063.8		
08048	57 1/4	1454.2									42 3/4	1085.9			53 7/8	1368.6		
08054	63 1/4	1606.6	10 1/2	266.70	11.18	12.5	5 3/4	146.05	8 5/8	218.95	48 3/4	1238.3	7 1/4	184.15	59 7/8	1521.0	1 11/16	42.67
08060	69 1/4	1759.0									54 3/4	1390.7			65 7/8	1673.4		
08072	81 1/4	2063.8									66 3/4	1695.5			77 7/8	1978.2		
08084	93 1/4	2368.6									78 3/4	2000.3			89 7/8	2283.0		

Size	K (in)	K (mm)	L (in)	L (mm)	M (in)	M (mm)	N		P (in)	P (mm)	R (in)	R (mm)	S (in)	S (mm)	T (in)	T (mm)
							NPT/BSPP Flange	SAE O-Ring								
05014																
05024	4	101.60	5 1/4	133.35					1	25.40					2 4/9	61.98
05036																
05054																
06024					1/2" x 3/4" slot	12.7 x 19.0 slot										
06036																
06048	5	127.00	6 1/4	158.75					1 1/2	38.10					2 7/8	73.15
06054																
06060																
06072																
08024																
08036																
08048																
08054	7	177.80	8 1/4	209.55	5/8 x 7/8 slot	15.7 x 22.3 slot	3	N/A	2	50.80	2 (3/8)	2 (76.2)	(3) 3/8	(3) (76.2)	4 1/4	107.95
08060																
08072																
08084																

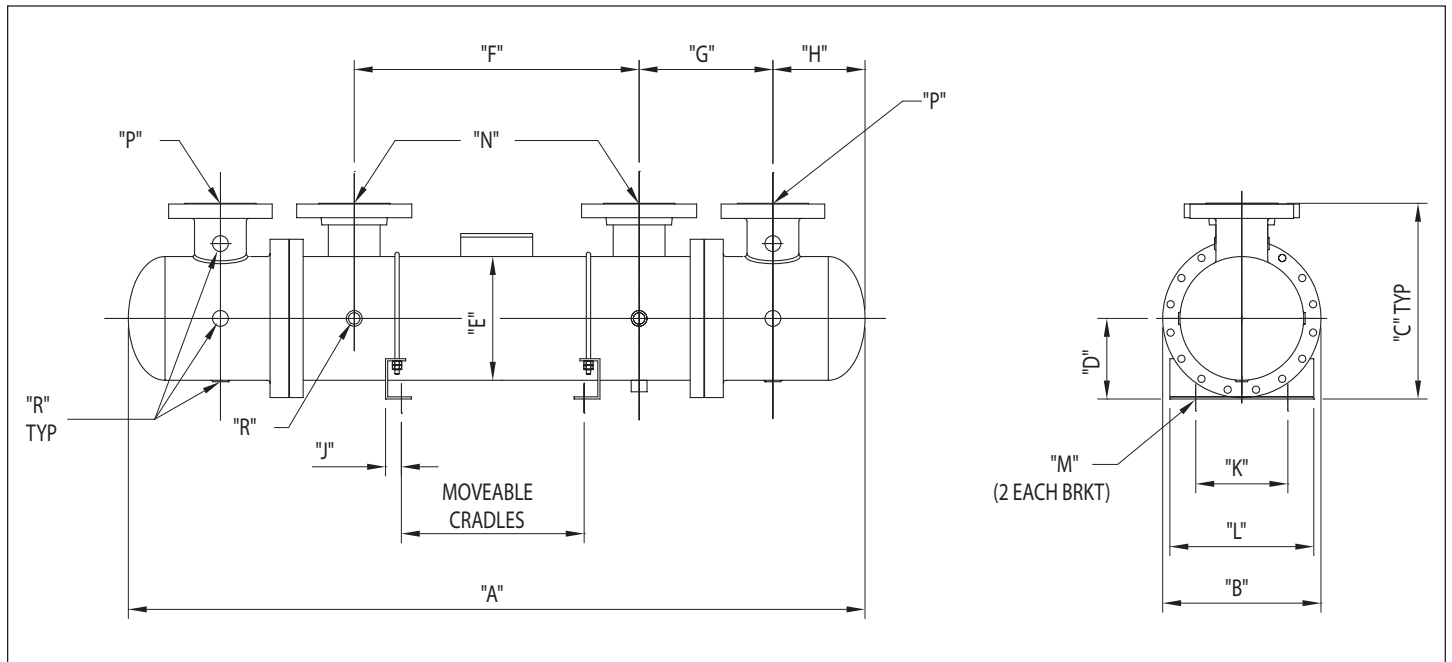
Product Performance per API-Basco Rating and Selection software.

FOR 8" ASME CODE DESIGN CONTACT FACTORY.



# 500 ES-B 10", 12" Dimensions

## 10"-12" – 1 PASS UNITS



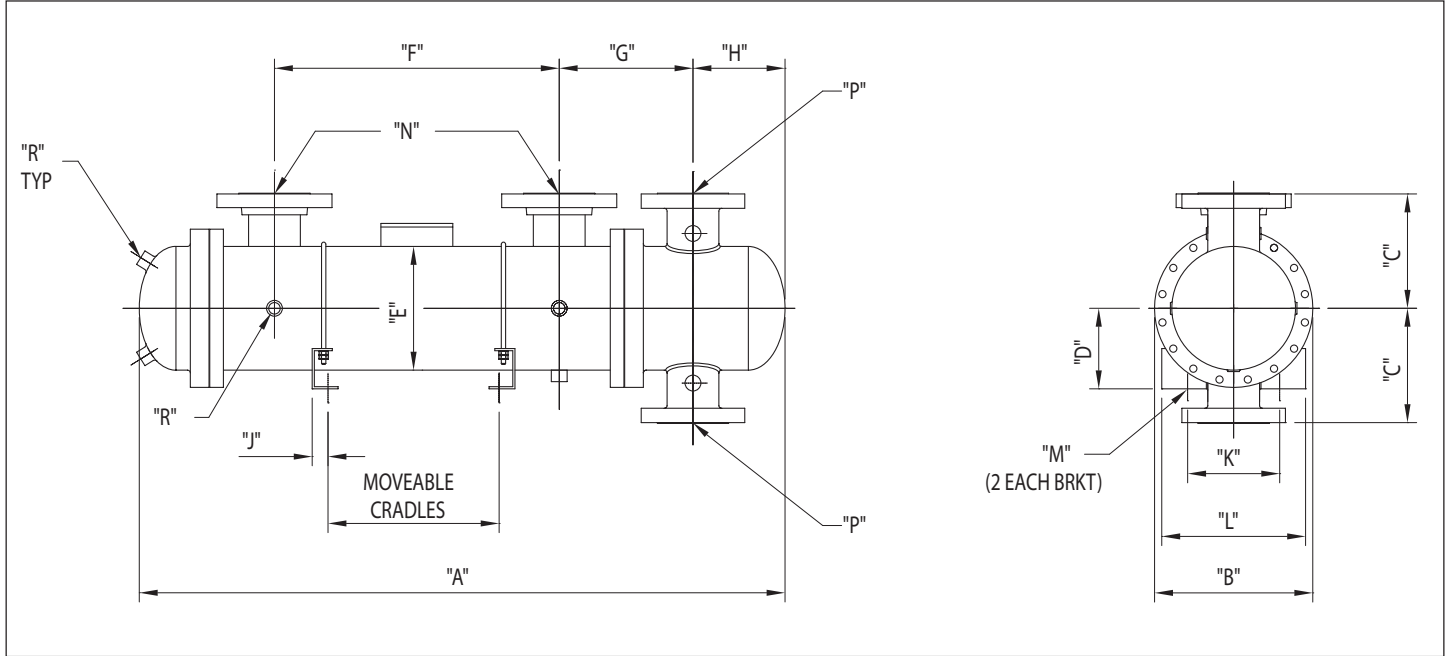
Size	A (in)	A (mm)	B (in)	B (mm)	C (in)	C (mm)	D (in)	D (mm)	E (in)	E (mm)	F (in)	F (mm)	G (in)	G (mm)	H (in)	H (mm)
10036	64	1625.6									24 3/4	628.7				
10048	76	1930.4									36 3/4	933.5				
10060	88	2235.2	13 3/4	349.25	17	431.80	7	177.80	10 3/4	273.05	48 3/4	1238.3	11 5/8	295.40	8	203.20
10072	100	2540.0									60 3/4	1543.1				
10084	112	2844.8									72 3/4	1847.9				
12048	78 3/4	2000.3									32	812.8				
12060	90 3/4	2305.1									44	1117.6				
12072	102 3/4	2609.9	15 3/4	400.05	20 1/4	514.35	8 1/4	209.55	12 3/4	323.85	56	1422.4	15 3/8	390.40	8	203.20
12084	114 3/4	2914.7									68	1727.2				
12096	126 3/4	3219.5									80	2032.0				

Size	J (in)	J (mm)	K (in)	K (mm)	L (in)	L (mm)	M (in)	M (mm)	N (in) Flange	N (mm) Flange	P (in) Flange	P (mm) Flange	R (in)	R (mm)
10036														
10048														
10060	1 3/8	35.05	8	203.20	12 1/2	317.5			4"-300#		4" 150#	4" 150#		
10072														
10084														
12048							3/4" x 1" slot	119.05x25.4 slot					11 (3/4)	11 (19.05)
12060														
12072	1 3/8	35.05	10	254.00	14 1/2	368.3			6" 300#		6" - 300#	6" - 150#		
12084														
12096														

Product Performance per API-Basco Rating and Selection software.

# 500 ES-B 10", 12" Dimensions

## 10"-12" – 2 PASS

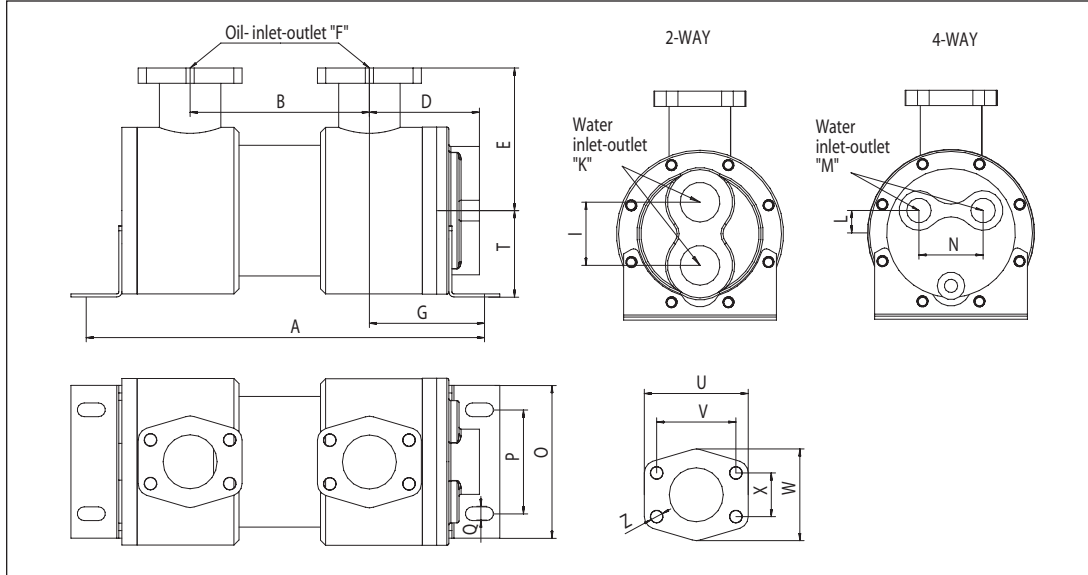


Size	A (in)	A (mm)	B (in)	B (mm)	C (in)	C (mm)	D (in)	D (mm)	E (in)	E (mm)	F (in)	F (mm)	G (in)	G (mm)	H (in)	H (mm)
10036	56 1/8	1425.4									24 3/4	628.7				
10048	68 1/8	1730.2									36 3/4	933.5				
10060	80 1/8	2035.0	13 3/4	349.25	10	254.00	7	177.80	10 3/4	273.05	48 3/4	1238.3	11 5/8	295.40	8	203.20
10072	92 1/8	2339.8									60 3/4	1543.1				
10084	104 1/8	2644.6									72 3/4	1847.9				
12048	70	1778.0									32	812.8				
12060	82	2082.8									44	1117.6				
12072	94	2387.6	15 3/4	400.05	12	304.80	8 1/4	209.55	12 3/4	323.85	56	1422.4	15 3/8	390.40	8	203.20
12084	106	2692.4									68	1727.2				
12096	118	2997.2									80	2032.0				

Size	J (in)	J (mm)	K (in)	K (mm)	L (in)	L (mm)	M (in)	M (mm)	N (in)	N (mm)	P (in)	P (mm)	R (in)	R (mm)
10036														
10048														
10060	1 3/8	35.05	8	203.20	12 1/2	317.5			4"-300#		4" 150#	4" 150#		
10072														
10084							3/4" x 1" slot	119.05x25.4 slot					7 (3/4)	7 (19.05)
12048														
12060														
12072	1 3/8	35.05	10	254.00	14 1/2	368.3			6" 300#		6" - 300#	6" - 150#		
12084														
12096														

Product Performance per API-Basco Rating and Selection software.

# 500 ES-U Dimensions



Size	A		B		D		E		G		F	T		I	
	(in)	(mm)	(in)	(mm)	(in)	(mm)	(in)	(mm)	(in)	(mm)		(in)	(mm)	(in)	(mm)
02008	12 - 3/16"	309	7"	177.5											
02012	16 - 1/8"	410	11"	278.5											
02014	18 - 1/8"	461	13"	329.5	2 - 5/8"	66	2 - 15/16"	75	2 - 13/16"	71	SAE 1"	2 - 3/16"	55	1 - 3/8"	35
02018	22 - 3/16"	563	17"	431.5											
02024	28 - 3/16"	715	23"	583.5											
02036	40 - 3/16"	1020	35"	888.5											
03008	12 - 3/4"	324	6"	155											
03012	16 - 3/4"	425	10"	256											
03014	18 - 3/4"	476	12"	307	3 - 3/8"	85	3 - 9/16"	90	3 - 1/2"	89	SAE 1 1/2"	2 - 5/8"	66	1 - 7/8"	47
03018	22 - 3/4"	578	16"	409											
03024	28 - 3/4"	730	22"	561											
03036	40 - 3/4"	1035	34"	866											
05012	18 - 3/4"	464	10 - 1/4"	261											
05014	20 - 5/16"	515	12 - 1/4"	312											
05018	24 - 5/16"	617	16 - 5/16"	414	4 - 1/8"	105	5 - 1/2"	140	4 - 1/4"	108	SAE 2"	3 - 3/8"	85	2 - 7/16"	62
05024	30 - 5/16"	769	22 - 5/16"	566											
05036	42 - 5/16"	1074	34 - 5/16"	871											
05048	54 - 5/16"	1379	46 - 5/16"	1176											
06018	24 5/16"	618	15 5/16"	390											
06024	30 5/16"	770	21 5/16"	542											
06030	36 5/16"	923	27 5/16"	695											
06036	42 5/16"	1075	33 5/16"	847	5 1/8"	131	5 11/16"	145	4 9/16"	116	SAE 2 1/2"	4 3/4"	120	3 - 7/16"	87
06042	48 5/16"	1228	39 5/16"	1000											
06048	54 5/16"	1380	45 5/16"	1152											
06054	60 5/16"	1532	51 5/16"	1304											

Size	K	L		M	N		O		P		Q		AREA	
	(in)	(in)	(mm)	(in)	(in)	(mm)	(in)	(mm)	(in)	(mm)	(in)	(mm)	SQF	M2
02008													7.85	0.73
02012													12.16	1.13
02014	1/2"						3 - 3/4"	95	2 - 1/2"	63	5/16" x 5/8"	8.5 x 16	15.39	1.43
02018													18.72	1.74
02024													25.29	2.35
02036													38.41	3.57
03008													14.85	1.38
03012													23.46	2.18
03014	1"	11/16"	18	1/2"	1 - 7/8"	48	4 - 3/4"	120	3"	76	7/16" x 1"	11 x 25	27.22	2.53
03018													35.40	3.29
03024													47.77	4.44
03036													72.41	6.73
05012													47.13	4.38
05014													55.63	5.17
05018	1 1/4"	7/8"	22	3/4"	2 - 1/8"	63	5 - 15/16"	150	4"	102	1/2" x 1-1/8"	13 x 28	72.41	6.73
05024													97.49	9.06
05036													147.84	13.74
05048													198.09	18.41
06018													64.56	6
06024													86.72568	.06
06030													109.6444	10.19
06036	2"	1"	25	1"	2-3/4"	70	7 1/2"	190	5 9/16"	142	1/2" x 1-1/8"	13 x 28	131.81	12.25
06042													154.7288	14.38
06048													175.926	16.35
06054													198.8448	18.48

Product Performance per API-Basco Rating and Selection software.